

# SLC ACTIVEWEAR

*Apparel Guide*



**2018**

INSPIRATION *for the* IMPRINTABLE  
SPORTSWEAR INDUSTRY





ON THE COVER: Next Level Apparel 6360, pg. 17.  
THIS PAGE: BELLA+CANVAS Men's Long Body Urban Tee—3006, page 34.  
OPPOSITE PAGE: Next Level Apparel 3900, pg. 7.  
BACK COVER: BELLA+CANVAS Unisex  $\frac{3}{4}$  Sleeve Baseball Tee—3200, pg. 36.





## *Contents*

---

**03**

NEXT LEVEL APPAREL

**32**

BELLA+CANVAS

**50**

BURNSIDE APPAREL

**52**

INDEPENDENT TRADING CO.

**67**

A4 APPAREL

**68**

GILDAN

**74**

ANVIL

**75**

RICHARDSON

**76**

FLEXFIT & YUPOONG

**83**

CIRQUE MOUNTAIN APPAREL

**84**

INDEX

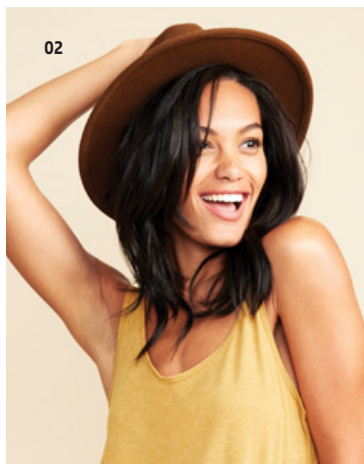


NEW *for* 2018

# SEASONAL FAVORITES

*from* SLC ACTIVEWEAR

DISCOVER SLC ACTIVEWEAR'S FRESH & ALWAYS  
ON-TREND SEASONAL FAVORITES.  
STAY WARM. STAY COOL. ALL YEAR LONG.







**01 BELLA+CANVAS 8809**  
Flowy High Neck Tank, pg. 41

**02 NEXT LEVEL APPAREL 5033**  
Women's Festival Tank, pg. 4

**03 NEXT LEVEL APPAREL 5040**  
Women's Festival Sleeveless V, pg. 5

**04 RICHARDSON 115**  
Low Pro Trucker, pg. 75

**05 NEXT LEVEL APPAREL 3604**  
Unisex Ringer Tee, pg. 9

**06 NEXT LEVEL APPAREL 3650**  
Unisex Short Sleeve Raglan Tee, pg. 9

**07 NEXT LEVEL APPAREL 6411**  
Unisex Sueded Long Sleeve Crew, pg. 18

**08 NEXT LEVEL APPAREL 9700**  
Unisex PCH Bomber Jacket, pg. 29

**09 INDEPENDENT TRADING CO.  
EXP94NAW**  
Men's Water Resistant Windbreaker  
Anorak Jacket, pg. 60

**10 NEXT LEVEL APPAREL 9103**  
Youth Zip Hoodie, pg. 31

**11 NEXT LEVEL APPAREL 9602**  
Unisex Zip Hoodie, pg. 31



5013



5033



## TWO LIVES. ONE FABRIC.

PERFECT FOR WORKING OUT AND  
ON-THE-GO STYLE

*from* NEXT LEVEL APPAREL

**NEW!** Next Level Apparel Women's Festival Muscle Tank—5013  
65% polyester/35% combed and ring-spun cotton, 3.5 ounce,  
40 single jersey.  
LADIES: XS, S, M, L, XL, 2XL.

**NEW!** Next Level Apparel Women's Festival Tank—5033  
65% polyester/35% combed and ring-spun cotton, 3.5 ounce,  
40 single jersey.  
LADIES: XS, S, M, L, XL, 2XL.





5030



**NEW! Next Level Apparel Women's Festival Scoop Tee—5030**

65% polyester/35% combed and ring-spun cotton, 3.5 ounce, 40 single jersey.

LADIES: XS, S, M, L, XL, 2XL.

5040



**NEW! Next Level Apparel Women's Festival Sleeveless V—5040**

65% polyester/35% combed and ring-spun cotton, 3.5 ounce, 40 single jersey.

LADIES: XS, S, M, L, XL, 2XL, 3XL.

6200



**Next Level Apparel Poly/Cotton Crew—6200**

65% polyester/35% combed ring-spun cotton, 40 singles, 3.5 ounce, jersey. Satin label. Fashion fit.

ADULT: XS, S, M, L, XL, 2XL, 3XL.

ANTIQUE DENIM	ANTIQUE GOLD	ASH	BLACK	CHARCOAL	ENVY	ESPRESSO	INDIGO	RED
ROYAL	ROYAL PINE	SAGE	SHIRAZ	SILVER	SMOKED PAPRIKA	STONEWASH DENIM	STONEWASH GREEN	WHITE





ECO HEAVYWEIGHT TEE FROM NEXT LEVEL APPAREL

*Lead the scene, and keep it green*

**NEW! Unisex Eco Performance Tee—4210**  
 36% recycled cotton/30% cotton/34% RPET polyester, 30 single, 4.3 ounce.  
 Fashion Fit.  
 UNISEX: XS, S, M, L, XL, 2XL, 3XL.

BLACK	CARDINAL	DARK HEATHER GRAY	HEATHER BLACK
HEATHER RED	HEATHER SAPPHIRE	HEAVY METAL	MIDNIGHT NAVY
WHITE			

**NEW! Unisex Eco Heavyweight Tee—4600**  
 60% organic cotton/40% recycled polyester, 20 single, 5.4 ounce.  
 Fashion Fit.  
 UNISEX: XS, S, M, L, XL, 2XL, 3XL.

BLACK	DARK HEATHER GRAY	HEATHER BLACK	HEATHER PACIFIC
HEATHER TEJA	NATURAL	ROYAL PINE	WHITE



# Combed and ring-spun cotton

## PREMIUM JERSEY FROM NEXT LEVEL APPAREL

### Next Level Apparel Men's Cotton Crew—3600

100% combed and ring-spun cotton, 32 singles, 4.3 ounce jersey. Set-in collar of 1x1 baby rib. Fabric laundered for reduced shrinkage and comfort. Tear away label. Fashion Fit.

Heather Gray is 90% combed and ring-spun cotton/10% polyester.

ADULT: XS, S, M, L, XL, 2XL, 3XL, 4XL.

### Next Level Apparel Perfect T—3300L

100% combed and ring-spun cotton, 34 single, 3.8 ounce jersey. Set-in collar of 1x1 baby rib with front cover stitch. Satin label. Junior Fit.

Heather Gray is 90% combed and ring-spun cotton/10% polyester.

Neon colors are 60% combed and ring-spun cotton/40% polyester.

LADIES: S, M, L, XL, 2XL.

### Next Level Apparel Boyfriend Tee—3900

100% combed and ring-spun cotton, 32 single, 4.3 ounce jersey. Set-in collar of 1x1 baby rib. Tear away label. Ladies Fit.

Heather Gray is 90% ring-spun cotton/10% polyester.

LADIES: XS, S, M, L, XL, 2XL, 3XL.

ANTIQUE GOLD	BANANA CREAM	BLACK	CANCUN
CARDINAL	COOL BLUE	CREAM	DARK CHOCOLATE
DARK GRAY	FOREST GREEN	GOLD	HEATHER GRAY
HEAVY METAL	HOT PINK	INDIGO	IVORY
KELLY GREEN	LIGHT BLUE	LIGHT GRAY	LIGHT OLIVE
LIGHT PINK	MAROON	MIDNIGHT NAVY	MILITARY GREEN
MINT	NATURAL	ORANGE	ROYAL
SAND	SCARLET	PURPLE BERRY	PURPLE RUSH
RED	TAHITI BLUE	TURQUOISE	VIBRANT YELLOW
WARM GRAY	WHITE		

3600



3300L

3900





3400L



3200



3605



**Next Level Apparel Perfect Sporty V—3400L**  
100% combed and ring-spun cotton, 34 single, 3.8 ounce jersey. Crossover v-neck. Set-in collar of self fabric with front cover stitch. Side-seamed with longer length and fashion fit. Satin label. Junior Fit.  
Heather Gray is 90% combed and ring-spun cotton/10% polyester. Neon Heathers are 60% combed and ring-spun cotton/40% polyester.  
**LADIES:** S, M, L, XL, 2XL.

BLACK	DARK GRAY	HEATHER GRAY
MIDNIGHT NAVY	RED	WHITE

**Next Level Apparel Premium Fitted V—3200**  
100% combed and ring-spun cotton, 32 single, 4.3 ounce jersey. Set-in collar of 1x1 baby rib knit. Fabric laundered for reduced shrinkage. Tear away label. Fashion Fit.  
**ADULT:** S, M, L, XL, 2XL.

BLACK	HEATHER GRAY	HEAVY METAL
INDIGO	SAND	TAHITI BLUE
WHITE		

**NEW! Next Level Apparel Unisex Pocket Crew—3605**  
100% combed and ring-spun cotton, 32 single, 4.3 ounce. Fashion Fit.  
**UNISEX:** XS, S, M, L, XL, 2XL, 3XL.

BLACK	COOL BLUE	FOREST GREEN
HEATHER GRAY	HEAVY METAL	MAROON
MIDNIGHT NAVY	MILITARY GREEN	NATURAL
WHITE		





# Two-Tone

## MAKE YOUR PRINTS POP ON CONTRAST TEES

### NEW! Next Level Apparel Unisex Short Sleeve Raglan Tee—3650

100% combed and ring-spun cotton, 32 single, 4.3 ounce. 1x1 baby rib binded collar. Fashion Fit.

UNISEX: XS, S, M, L, XL, 2XL, 3XL.

ANTIQUE GOLD BLACK	BLACK BLACK	BLACK HEATHER GRAY	BLACK NATURAL
BLACK WHITE	FOREST GREEN NATURAL	MAROON NATURAL	NATURAL BLACK
ROYAL HEATHER GRAY	WARM GRAY BLACK		

### NEW! Next Level Apparel Women's Ringer Tee—3904

100% combed and ring-spun cotton, 32 single, 4.3 ounce. 1x1 baby rib binded collar and cuffs. Ladies Fit.

LADIES: XS,S, M, L, XL, 2XL.

### NEW! Next Level Apparel Unisex Ringer Tee—3604

100% combed and ring-spun cotton, 32 single, 4.3 ounce. Fashion Fit.

UNISEX: XS, S, M, L, XL, 2XL, 3XL.

BLACK/ HEATHER GRAY	BLACK/ NATURAL	BLACK/WHITE	FOREST GREEN/ NATURAL
MAROON/ NATURAL	MIDNIGHT NAVY/NATURAL		

3650



3604



3904







3633



3533

## *Muscle Up*

### TANK TOPS FROM NEXT LEVEL APPAREL

#### Next Level Apparel Jersey Tank— 3633

100% combed and ring-spun cotton, 32 single, 4.3 ounce jersey. Self fabric binding. Fabric laundered for reduced shrinkage. Tear away label. Fashion Fit.

ADULT: S, M, L, XL, 2XL.

#### Next Level Apparel Jersey Tank— 3533

57% combed and ring-spun cotton/38% polyester/5% spandex, 40 single, 4.3 ounce jersey. Self fabric binding. Double-needle hem. Fabric laundered for reduced shrinkage. Tear away label. Junior Fit.

LADIES: S, M, L, XL, 2XL.

BLACK	BLACK/ HEATHER GRAY
DARK GRAY	ENVY
HEATHER GRAY	HEAVY METAL
HOT PINK	KELLY GREEN
LIGHT HEATHER GRAY	MIDNIGHT NAVY
MIDNIGHT NAVY/ HEATHER GREY	MINT
NEON HEATHER ORANGE	NEON HEATHER PINK
PURPLE RUSH	RASPBERRY
RED	ROYAL
TAHITI BLUE	TURQUOISE
WHITE	WHITE/ HEATHER GREY





**Next Level Apparel Women's**

**Gathered Racerback Tank—6338**

60% combed and ring-spun cotton/40% polyester, 30 single, 4.0 ounce jersey. Tear away label. Classic Fit.

LADIES: XS, S, M, L, XL, 2XL.

**Next Level Apparel Jersey Racerback Tank—6633**

57% combed and ring-spun cotton/38% polyester/5% spandex, 40 single, 4.3 ounce jersey. Self fabric binding. Double-needle hem. Fabric laundered for reduced shrinkage. Tear away label. Junior Fit.

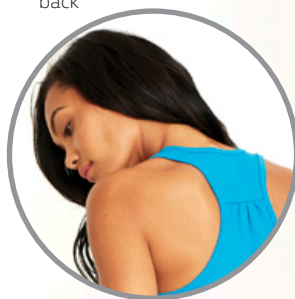
ADULT: S, M, L, XL, 2XL.

BLACK	DARK GRAY
HEATHER GRAY	HOT PINK
LIGHT HEATHER GRAY	MIDNIGHT NAVY
MILITARY GREEN	MINT
RED	ROYAL
TURQUOISE	WHITE

6338

6633

back



back





3601



3602



**Next Level Apparel Premium Fitted Long Sleeve Crew—3601**  
100% combed and ring-spun cotton, 32 single, 4.3 ounce jersey. Double-needle stitching on hemmed sleeves. Comfortable and lightweight. Set-in collar of 1x1 baby rib. Side-seamed. Fabric laundered for reduced shrinkage. Tear away label. Fashion Fit.  
Heather Gray is 90% combed and ring-spun cotton/10% polyester.  
**ADULT:** S, M, L, XL, 2XL.

**Next Level Apparel Men's Cotton Long Body Crew—3602**  
100% combed and ring-spun cotton, 32 single, 4.3 ounce jersey. Set-in collar of 1x1 baby rib. Tear away label. Fashion Fit.  
Heather Gray is 90% combed and ring-spun cotton/10% polyester.  
**ADULT:** S, M, L, XL, 2XL, 3XL.

BLACK	CARDINAL	COOL BLUE	HEATHER GRAY	HEAVY METAL	INDIGO	MIDNIGHT NAVY	MILITARY GREEN	RED
ROYAL	WHITE							



# USA Made

## ALL AMERICAN TEES FROM NEXT LEVEL APPAREL

### **NEW!** Next Level Apparel Made in USA Men's Triblend Crew—6010A

25% combed and ring-spun cotton/  
50% polyester/25% rayon, 32 single.  
4.3 ounce. Set-in collar of 1x1 tri-blend  
baby rib. Fashion Fit.

ADULT: XS, S, M, L, XL, 2XL, 3XL.

### **NEW!** Next Level Apparel Made in USA Boyfriend Tee—3900A

100% combed and ring-spun cotton.  
32 single. 4.3 ounce. Set-in collar of  
1x1 baby rib. Ladies Fit.

Heather Gray is 90% combed and ring-spun  
cotton/10% polyester.

UNISEX: XS, S, M, L, XL, 2XL, 3XL.

### **NEW!** Next Level Apparel Men's Made in USA Crew—3600A

100% combed and ring-spun cotton.  
32 single. 4.3 ounce. Set-in collar of  
1x1 baby rib. Fashion Fit.

Heather Gray is 90% combed and ring-spun  
cotton/10% polyester.

ADULT: XS, S, M, L, XL, 2XL, 3XL.

BLACK	HEATHER GRAY
HEATHER WHITE	INDIGO
MIDNIGHT NAVY	MILITARY GREEN
PREMIUM HEATHER	RED
ROYAL	VINTAGE BLACK
VINTAGE NAVY	VINTAGE RED
VINTAGE ROYAL	WHITE







## THE IDEAL COLLECTION FROM NEXT LEVEL APPAREL

*The shirt you have been waiting for at a price you could only dream of.*

### Next Level Apparel Ideal Tee—1510

60% combed and ring-spun cotton/  
40% polyester, 30 single, 3.9 ounce. Set-in  
collar of 1x1 baby rib with front cover stitch.  
Tear away label. Classic Fit.

LADIES: S, M, L, XL, 2XL, 3XL.

### Next Level Apparel Ideal V—1540

60% combed and ring-spun cotton/  
40% polyester, 30 single, 3.9 ounce. Set-in collar  
of 1x1 baby rib with front cover stitch. Tear away  
label. Classic Fit.

LADIES: S, M, L, XL, 2XL, 3XL.

### Next Level Apparel Women's Ideal Dolman— 1560

60% combed and ring-spun cotton/  
40% polyester, 30 single, 4.0 ounce. Flowy Fit.

LADIES: XS, S, M, L, XL, 2XL, 3XL.

BANANA CREAM	BLACK	CANCUN	DARK GRAY	HEATHER GRAY	HOT PINK	INDIGO	KELLY GREEN	LIGHT ORANGE
LILAC	MIDNIGHT NAVY	MILITARY GREEN	MINT	PURPLE RUSH	RASPBERRY	RED	ROYAL	SCARLET
SILVER	TAHITI BLUE	TURQUOISE	WARM GRAY	WHITE				



1533

back

**Next Level Apparel Ideal Racerback Tank—1533**

60% combed and ring-spun cotton/40% polyester, 30 single, 3.9 ounce. Self fabric binding. Tear away label. Classic Fit.

LADIES: S, M, L, XL, 2XL.

**COLOR BLOCKS (FRONT/BACK):**



1534

back

**Next Level Apparel Ideal Colorblock Racerback Tank—1534**

60% combed and ring-spun cotton/40% polyester, 30 single, 3.9 ounce. Self fabric binding. Tear away label. Classic Fit.

LADIES: XS, S, M, L, XL, 2XL.







6210

6610



SAY "HELLO" TO THE  
**#1 SELLING  
 TEE**  
*from*  
 NEXT LEVEL APPAREL



6640

6240



**Next Level Apparel CVC Crew—  
6210**

60% combed and ring-spun cotton/40% polyester, 32 single, 4.3 ounce. Set-in collar of 1x1 CVC baby rib. Fabric laundered for reduced shrinkage. Tear away label. Fashion Fit.

ADULT: XS, S, M, L, XL, 2XL, 3XL, 4XL.

**Next Level Apparel CVC Tee—  
6610**

60% combed and ring-spun cotton/40% polyester, 32 single, 4.3 ounce. Set-in collar of 1x1 CVC baby rib. Fabric laundered for reduced shrinkage. Tear away label. Ladies Fit.

LADIES: XS, S, M, L, XL, 2XL, 3XL.

**Next Level Apparel CVC Deep V—  
6640**

60% combed and ring-spun cotton/40% polyester, 32 single, 4.3 ounce. Set-in neck of 1x1 baby rib knit. Fabric laundered for reduced shrinkage. Tear away label. Ladies Fit.

LADIES: S, M, L, XL, 2XL.

**Next Level Apparel CVC V-neck—  
6240**

60% combed and ring-spun cotton/40% polyester, 32 single, 4.3 ounce. Set-in collar of 1x1 baby rib knit. Fabric laundered for reduced shrinkage. Tear away label. Fashion Fit.

ADULT: S, M, L, XL, 2XL.



6360



**Next Level Apparel Women's Roll Sleeve Dolman—6360**

60% combed and ring-spun cotton/40% polyester, 30 single, 4.0 ounce. Set-in collar of 1x1 baby rib with front cross stitch. Tear away label. Flowy Fit. LADIES: XS, S, M, L, XL, 2XL, 3XL.

6233



**Next Level Apparel Premium Fitted CVC Tank—6233**

60% combed and ring-spun cotton/40% polyester, 32 single, 4.3 ounce. Set-in collar of 1x1 CVC baby rib. Fabric laundered for reduced shrinkage and softness. Tear away label. Fashion Fit. Men's: S, M, L, XL, 2XL, 3XL.

6333



**Next Level Apparel Men's Muscle Tank—6333**

60% combed and ring-spun cotton/40% polyester, 30 single, 4.0 ounce. Set-in collar of 1x1 baby rib. Tear away label. Fashion Fit. ADULT: S, M, L, XL, 2XL, 3XL.

6933



**Next Level Apparel Terry Racerback Tank—6933**

50% combed and ring-spun cotton/50% polyester, 30 single, 4.9 ounce french terry. NAFTA friendly. US fabric assembled in Mexico. Fabric laundered for reduced shrinkage. Satin label. Classic Fit. LADIES: S, M, L, XL, 2XL.

APPLE GREEN	BANANA CREAM	BLACK	BONDI BLUE	CANCUN	CARDINAL	CHARCOAL	CREAM	DARK GRAY
DARK HEATHER GRAY	ESPRESSO	H. APPLE GREEN	H. BANANA CREAM	H. CREAM	H. LILAC	H. MILITARY GREEN	H. MINT	H. ORANGE
H. PURPLE BERRY	H. RASPBERRY	H. WARM GRAY	HEATHER GRAY	HOT PINK	ICE BLUE	INDIGO	KELLY GREEN	LIGHT OLIVE
LIGHT ORANGE	LILAC	LUSH	MIDNIGHT NAVY	MILITARY GREEN	MINT	NEON HEATHER GREEN	NEON HEATHER ORANGE	NEON HEATHER PINK
NEON YELLOW	ORANGE	PLUM	PURPLE BERRY	PURPLE RUSH	RASPBERRY	RED	ROYAL	SAND
SCARLET	SILK	STONE GRAY	STORM	TAHITI BLUE	TEAL	TURQUOISE	WARM GRAY	WHITE





6410



6411

## Velvet Soft

### SUEDED JERSEY FROM NEXT LEVEL APPAREL

#### Next Level Apparel Premium Sueded Crew—6410

60% combed and ring-spun cotton/40% polyester, 32 single, 4.3 ounce sueded jersey. Fabric laundered for reduced shrinkage. Set-in collar of 1x1 sueded baby rib. Satin label. Fashion Fit.

ADULT: XS, S, M, L, XL, 2XL, 3XL.

#### NEW! Next Level Apparel Unisex Sueded Long Sleeve Crew—6411

60% combed and ring-spun cotton/40% polyester, 32 single, 4.3 ounce. 2" rib cuffs. Fashion Fit.

UNISEX: XS, S, M, L, XL, 2XL, 3XL.

#### Next Level Apparel Sueded Unisex Hooded Zip—6491

60% combed ring-spun cotton/40% poly, 4.3 ounce sueded jersey. 32 single.

ADULT: XS, S, M, L, XL, 2XL, 3XL.



6491



6491

BANANA CREAM	BLACK
CARDINAL	COOL BLUE
DARK HEATHER GRAY	ENVY
HEATHER CHARCOAL	HEATHER COOL BLUE
HEATHER FOREST GREEN	HEATHER MAROON
HEATHER METAL	HEAVY METAL
LIGHT BLUE	LIGHT GRAY
MIDNIGHT NAVY	MILITARY GREEN
MINT	NATURAL
RED	ROYAL
SAND	TAHITI
TAHITI BLUE	TURQUOISE
WARM GRAY	WHITE







2021



2050

## *Athleisure with a twist*

MOCK TWIST FROM NEXT LEVEL APPAREL

**Next Level Apparel Unisex Mock Twist Raglan Hoodie—2021**  
60% combed and ring-spun cotton/40% polyester, 20 single,  
5.2 ounce. Self binding collar. Tear away label. Fashion Fit.  
**ADULT:** XS, S, M, L, XL, 2XL, 3XL.

**Next Level Apparel Men's Mock Twist Raglan Crew—2050**  
60% combed and ring-spun cotton/40% polyester, 20 single,  
5.2 ounce. Self-binding collar. Tear away label. Fashion Fit.  
**ADULT:** S, M, L, XL, 2XL, 3XL.



BLACK



FOREST GREEN



HEATHER GRAY



INDIGO



LIGHT MAROON





6710



6010



6740

## *Your favorite vintage look*

TRI-BLEND FROM NEXT LEVEL APPAREL

### Next Level Apparel Ladies Tri-blend Crew—6710

50% polyester/25% combed and ring-spun cotton/25% rayon, 32 single, 4.3 ounce. Set-in collar of 1x1 tri-blend baby rib knit. Fabric laundered for reduced shrinkage. Satin label. Ladies Fit.

LADIES: S, M, L, XL, 2XL.

### Next Level Apparel Men's Tri-blend Crew—6010

50% polyester/25% combed and ring-spun cotton/25% rayon, 32 single, 4.3 ounce. Set-in collar of 1x1 tri-blend baby rib. Fabric laundered for comfort and reduced shrinkage. Satin label. Fashion Fit.

ADULT: XS, S, M, L, XL, 2XL, 3XL.

### Next Level Apparel Ladies Tri-blend Deep V—6740

50% polyester/25% combed and ring-spun cotton/25% rayon, 32 single, 4.3 ounce. Set-in collar of 1x1 tri-blend baby rib. Fabric laundered for reduced shrinkage. Satin label. Ladies Fit.

LADIES: S, M, L, XL, 2XL.

ENVY	HEATHER WHITE	INDIGO	MACCHIATO	MILITARY GREEN	PREMIUM HEATHER	PURPLE RUSH	TAHITI BLUE	VENETIAN GRAY
VINTAGE BLACK	VINTAGE LIGHT ORANGE	VINTAGE LILAC	VINTAGE NAVY	VINTAGE PINK	VINTAGE PURPLE	VINTAGE RED	VINTAGE ROYAL	VINTAGE SHOCKING PINK
VINTAGE TURQUOISE								





**Next Level Apparel Tri-blend Dolman—6760**

50% polyester/25% combed and ring-spun cotton/25% rayon, 32 single, 4.3 ounce. Set-in collar of 1x1 baby rib knit with front cover-stitch. Fabric laundered for reduced shrinkage. Satin label. Flowy Fit. LADIES: XS, S, M, L, XL, 2XL.

**Next Level Apparel Tri-blend Racerback Tank Dress—6734**

50% polyester/25% combed and ring-spun cotton/25% rayon, 32 single, 4.3 ounce. Satin label. Ladies Fit. LADIES: XS, S, M, L, XL, 2XL.

**Next Level Apparel Tri-Blend Scoop Tee—6730**

50% polyester/25% combed and ring-spun cotton/25% rayon, 32 single, 4.3 ounce. Set-in collar of 1x1 baby rib with front cover-stitch. Satin label. Ladies Fit. LADIES: S, M, L, XL, 2XL.

**Next Level Apparel Ladies Tri-blend Racerback Tank—6733**

50% polyester/25% combed and ring-spun cotton/25% rayon, 32 single, 4.3 ounce. Fabric laundered for reduced shrinkage. Satin label. Flowy Fit. LADIES: XS, S, M, L, XL, 2XL.



## Our perfect blend with retail detail.

### TRI-BLEND FROM NEXT LEVEL APPAREL

#### Next Level Apparel Mens Tri-blend Long Sleeve Henley—6072

50% polyester/25% combed and ring-spun cotton/25% rayon, 32 single, 4.3 ounce. Dyed-to-match buttons, raglan sleeves. Tear away label. Fashion fit.

ADULT: S, M, L, XL, 2XL.

#### Next Level Apparel Tri-blend Long Sleeve Scoop Tee—6731

50% polyester/25% combed and ring-spun cotton/25% rayon, 32 single, 4.3 ounce. Set-in collar of 1x1 baby rib with front cover-stitch. Fabric laundered for reduced shrinkage. Satin label. Ladies fit.

LADIES: S, M, L, XL, 2XL.

#### Next Level Apparel Unisex Tri-blend Long Sleeve Hoodie—6021

50% polyester/25% combed and ring-spun cotton/25% rayon, 32 single, 4.3 ounce. Cuff is 1x1 tri-blend baby rib knit. Fabric laundered for comfort and reduced shrinkage. Satin label. Fashion fit.

ADULT: XS, S, M, L, XL, 2XL.

#### Next Level Apparel Men's Tri-blend Long Sleeve Crew—6071

50% polyester/25% combed and ring-spun cotton/25% rayon, 32 single, 4.3 ounce. Set-in collar of 1x1 tri-blend baby rib. Satin label. Fashion fit.

ADULT: XS, S, M, L, XL, 2XL.

6072

6731

6021

6071

ENVY	HEATHER WHITE
INDIGO	MACCHIATO
MILITARY GREEN	PREMIUM HEATHER
PURPLE RUSH	TAHITI BLUE
TURQUOISE	VENETIAN GRAY
VINTAGE BLACK	VINTAGE NAVY
VINTAGE PURPLE	VINTAGE RED
VINTAGE ROYAL	VINTAGE TURQUOISE





6051

**Next Level Apparel Unisex Tri-blend  
¾ Raglan—6051**

50% polyester/25% combed and ring-spun cotton/25% rayon, 32 single, 4.3 ounce. Set-in collar of 1x1 tri-blend baby rib. Fabric laundered for reduced shrinkage. Satin label. Fashion fit.

ADULT: XS, S, M, L, XL, 2XL, 3XL.

**COLOR BLOCKS (SLEEVE/BODY):**



ENVY/  
HEATHER WHITE



ENVY/  
PREM. HEATHER



INDIGO/  
HEATHER WHITE



PURPLE RUSH/  
HEATHER WHITE



PREM. HEATHER/  
HEATHER WHITE



PREM. HEATHER/  
VINTAGE BLACK



TAHITI BLUE/  
HEATHER WHITE



VENETIAN GRAY/  
HEATHER WHITE



VINTAGE BLACK/  
VINTAGE BLACK



VINTAGE BLACK/  
HEATHER WHITE



VINTAGE BLACK/  
PREM. HEATHER



VINTAGE NAVY/  
PREM. HEATHER



VINTAGE PINK/  
HEATHER WHITE



VINTAGE PURPLE/  
HEATHER WHITE



VINTAGE RED/  
HEATHER WHITE



VINTAGE RED/  
PREM. HEATHER



VINTAGE RED/  
VINTAGE BLACK



VINTAGE ROYAL/  
HEATHER WHITE



VINTAGE ROYAL/  
PREM. HEATHER





# Inspired Dye

## SOFTER SHADES & LIVED-IN LOOKS

### Next Level Apparel Inspired Dye Crew—7410

100% combed and ring-spun cotton, 24 single, 5.5 ounce. Garment dyed. 1x1 baby rib neck. Set-in collar with front cover stitch. Twill tape at back neck. Tear away label. Fashion fit.

ADULT: XS, S, M, L, XL, 2XL, 3XL.

### Next Level Apparel Inspired Dye Pocket Crew—7415

100% combed and ring-spun cotton, 24 single, 5.5 ounce. Garment dyed. 1x1 baby rib neck. Set-in collar with front cover stitch. Twill tape at back neck. Tear away label. Fashion fit.

ADULT: XS, S, M, L, XL, 2XL, 3XL.

### Next Level Apparel Inspired Dye Tank—7433

100% combed and ring-spun cotton, 24 single, 5.5 ounce. Garment dyed. Tear away label. Fashion fit.

ADULT: XS, S, M, L, XL, 2XL, 3XL.

### Next Level Apparel Inspired Dye Mens L/S W/P—7451

100% combed and ring-spun cotton, 24 single, 5.5 ounce. Garment dyed. 1x1 baby rib neck. Set-in collar with front cover stitch. Twill tape at back neck. Tear away label. Fashion fit.

ADULT: XS, S, M, L, XL, 2XL, 3XL.

### Next Level Apparel Inspired Dye Long Sleeve Crew—7401

100% combed and ring-spun cotton, 24 single, 5.5 ounce. Garment dyed. 1x1 baby rib neck and cuffs. Set-in collar with front cover stitch. Twill tape at back neck. Tear away label. Fashion fit.

ADULT: XS, S, M, L, XL, 2XL, 3XL.

BLACK	BLONDE	BLUE JEAN	CLOVER
GUAVA	LEAD	OCEAN	PERIBLUE
SHADOW	SHIRAZ	SMOKED PAPRIKA	WHITE



# Waffle Thermal

SMOOTHER PRINT-FACE WITH A MODERN FIT



**Next Level Apparel Unisex Thermal Hoodie—8221**  
60% combed and ring-spun cotton/40% polyester, 36 single, 5.6 ounce. 1x1 waffle thermal baby rib. Satin label. Fashion fit.  
ADULT: XS, S, M, L, XL, 2XL, 3XL.

**Next Level Apparel Unisex Long Sleeve Thermal—8201**  
60% combed and ring-spun cotton/40% polyester, 36 single, 5.6 ounce. Fabric laundered for reduced shrinkage. 1x1 waffle thermal baby rib cuff. Satin label. Fashion fit.  
ADULT: XS, S, M, L, XL, 2XL.

BLACK	BLACK/GRAY STITCHING	ENVY	HEATHER BLUE	HEATHER CHARCOAL	HEATHER GRAY	HEAVY METAL	LIGHT PINK	MAROON
MIDNIGHT NAVY	RED	ROYAL	SAND	WARM GRAY	WHITE	WHITE/GRAY STITCHING		







3310



3710



3110

## The Youth Collection

PREMIUM QUALITY, FIT, AND DURABILITY

### Next Level Apparel Premium Boys Crew—3310

100% combed and ring-spun cotton, 32 single, 4.3 ounce jersey. Set-in collar of 1x1 baby rib. Fabric laundered for reduced shrinkage. Tear away label. Retail youth fit.

Heather Grey is 90% combed and ring-spun cotton/10% polyester.

YOUTH: XS(4/5), S(6/7), M(8), L(10/12), XL(14/16).

ANTIQUE GOLD	BLACK	FOREST GREEN	GOLD
HEATHER GRAY	HEAVY METAL	KELLY GREEN	LIGHT BLUE
LIGHT GRAY	LIGHT PINK	MAROON	MIDNIGHT NAVY
ORANGE	PURPLE RUSH	RED	ROYAL
TURQUOISE	WARM GRAY	WHITE	

### Next Level Apparel Youth Princess Tee—3710

100% combed and ring-spun cotton, 32 single, 4.3 ounce jersey. Set-in collar of 1x1 baby rib knit with cover stitch. Fabric laundered for reduced shrinkage. Tear away label. Retail girls fit.

Heather Gray is 90% combed and ring-spun cotton/10% polyester.

YOUTH: XS(3/4), S(6/6X), M(7/8), L(10/12), XL(14/16).

BLACK	CANCUN	HEATHER GRAY	HOT PINK
LIGHT PINK	LILAC	MIDNIGHT NAVY	PURPLE RUSH
RASPBERRY	RED	TAHITI BLUE	TURQUOISE
VIBRANT YELLOW	WHITE		

### NEW! Next Level Apparel Toddler Tee—3110

100% combed ring-spun cotton, 32 single jersey, 4.3 ounce. Retail toddler fit.

TODDLER: 2T, 3T, 4T.

BLACK	HEATHER GRAY	KELLY GREEN	LIGHT BLUE
LIGHT PINK	MIDNIGHT NAVY	RED	ROYAL
VIBRANT YELLOW	WHITE		





3312



3352



3712



6310

#### Next Level Apparel Boys CVC Crew—3312

60% combed and ring-spun cotton/40% polyester, 32 single, 4.3 ounce. Set-in collar of 1x1 CVC baby rib with front cover stitch. Tear away label. Retail youth fit.

YOUTH: XS(4/5), S(6/7), M(8), L(10/12), XL(14/16).

BANANA CREAM	BLACK	CHARCOAL	DARK HEATHER GRAY
ICE BLUE	KELLY	MIDNIGHT NAVY	MILITARY GREEN
ORANGE	PURPLE RUSH	RED	ROYAL
TAHITI BLUE	TURQUOISE	WHITE	

#### Next Level Apparel Princess CVC Crew—3712

60% combed and ring-spun cotton/40% polyester, 32 single, 4.3 ounce. Set-in collar of 1x1 CVC baby rib with front cover stitch. Fabric laundered for reduced shrinkage and comfort. Tear away label. Retail girls fit.

YOUTH: XS(3/4), S(6/6X), M(7/8), L(10/12), XL(14/16).

APPLE GREEN	BANANA CREAM	BONDI BLUE	ICE BLUE
LILAC	MINT	NEON HEATHER GREEN	NEON HEATHER ORANGE
NEON HEATHER PINK	NEON YELLOW	ORANGE	PURPLE BERRY
RASPBERRY	SILK		

#### Next Level Apparel Youth CVC ¾ Raglan Sleeve Tee—3352

60% combed and ring-spun cotton/40% polyester, 32 single, 4.3 ounce. Set-in collar of 1x1 CVC baby rib and front cover stitch. Tear away label. Retail youth fit.

YOUTH: XS(4/5), S(6/7), M(8), L(10/12), XL(14/16).

##### COLOR BLOCKS (SLEEVE/BODY):

BLACK/DARK HEATHER GRAY	BLACK/WHITE	HOT PINK/WHITE	ICE BLUE/DARK HEATHER GRAY
KELLY GREEN/WHITE	LILAC/DARK HEATHER GRAY	MIDNIGHT/DARK HEATHER GRAY	RED/WHITE
ROYAL/WHITE			

#### Next Level Apparel Youth Tri-Blend Crew Tee—6310

50% polyester/25% combed and ring-spun cotton/25% rayon, 32 single, 4.3 ounce. Set-in collar of 1x1 tri-blend baby rib. Fabric laundered for reduced shrinkage. Satin label. Retail youth fit.

YOUTH: XS(4/5), S(6/7), M(8), L(10/12), XL(14/16).

HEATHER WHITE	PREMIUM HEATHER	VINTAGE BLACK	VINTAGE NAVY
VINTAGE RED	VINTAGE ROYAL	VINTAGE TURQUOISE	





NEXT LEVEL APPAREL

*The Fleece Collection*

**Next Level Apparel Unisex French Terry Raglan Crew—9000**  
60% combed and ring-spun cotton/40% polyester, 5.3 ounce. Raglan sleeve. 1x1 ribbing at collar, waistband and cuffs. Tear away label. Fashion fit.  
ADULT: XS, S, M, L, XL, 2XL, 3XL.

BLACK	HEATHER GRAY	HEAVY METAL
MIDNIGHT NAVY	MILITARY GREEN	RED
ROYAL	WHITE	

**Next Level Apparel Unisex French Terry Pullover Hoodie—9301**  
60% combed and ring-spun cotton/40% polyester, 5.3 ounce. Jersey lined contrast with matching lined hood and drawcord. Metal eyelets. 1x1 ribbing at cuffs and waistband. Front pouch pocket. Tear away label. Fashion fit.  
ADULT: XS, S, M, L, XL, 2XL, 3XL.

COLORS (BODY/HOOD & DRAWCORD):

BLACK/BLACK	BLACK/GOLD	BLACK/HEATHER GRAY
BLACK/TURQUOISE	HEATHER GRAY/BLACK	HEATHER GRAY/KELLY
HEATHER GRAY/MIDNIGHT NAVY	HEATHER GRAY/ROYAL	HEAVY METAL/HEAVY METAL
MIDNIGHT NAVY/HEATHER GRAY	RED/BLACK	RED/ROYAL
WHITE/HEATHER GRAY		

**Next Level Apparel Unisex French Terry Zip Hoodie—9601**  
60% combed and ring-spun cotton/40% polyester, 5.3 ounce. Jersey lined contrast with matching lined hood and drawcord. Metal eyelets. 1x1 ribbing at cuffs and waistband. Tear away label. Fashion fit.  
ADULT: XS, S, M, L, XL, 2XL, 3XL.

COLORS (BODY/HOOD & DRAWCORD):

BLACK/BLACK	HEATHER GRAY/HEATHER GRAY	HEAVY METAL/HEAVY METAL
MIDNIGHT NAVY/HEATHER GRAY	ROYAL/HEATHER GRAY	WHITE/HEATHER GRAY





9300

## *PCH Fleece*

INSPIRED BY THE ICONIC PACIFIC COAST HIGHWAY

### **Next Level Apparel Unisex PCH Pullover Hoodie—9300**

60% combed and ring-spun cotton/40% polyester, 7.4 ounce. Heathered fleece with unique pockets for a clean finished look. Metal eyelets. Matching drawcord. 1x1 ribbing at cuffs. Tear away label. Fashion fit.

ADULT: XS, S, M, L, XL, 2XL, 3XL.

HEATHER BAY BLUE	HEATHER BLACK	HEATHER CARDINAL	HEATHER GRAY
HEATHER MAROON	HEATHER MIDNIGHT NAVY	HEATHER MILITARY GREEN	HEATHER TEAL

### **NEW! Next Level Apparel Unisex PCH Bomber Jacket—9700**

60% combed and ring-spun cotton/40% polyester, 7.4 ounce. Heathered fleece. Solid Black ribbing at neck and cuffs. Raglan sleeves. Inside neck patch for printable label. Tear away label. Fashion fit.

UNISEX: XS, S, M, L, XL, 2XL, 3XL.

HEATHER BLACK	HEATHER MILITARY GREEN
---------------	------------------------



9700





9801

9800



9600

INSPIRED BY YOUR FAVORITE PAIR OF JEANS

## *Denim Fleece*

### Next Level Apparel Women's Denim Fleece Jogger—9801

52% combed and ring-spun cotton/ 48% polyester, 7.4 ounce. Heather denim-inspired fleece. Side pockets. Solid color ribbed waistband and bottom cuffs. Tear away label. Ladies fit.

LADIES: XS, S, M, L, XL, 2XL, 3XL.



### Next Level Apparel Men's Denim Fleece Jogger—9800

52% combed and ring-spun cotton/ 48% polyester, 7.4 ounce. Heather denim-inspired fleece. Side and back pocket. Solid color ribbed waistband and bottom cuffs. Tear away label. Fashion fit.

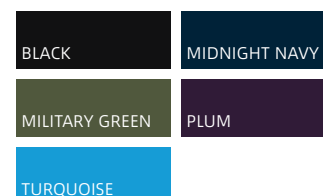
ADULT: XS, S, M, L, XL, 2XL.



### Next Level Apparel Unisex Denim Fleece Zip Hoodie—9600

50% combed and ring-spun cotton/ 50% polyester, 7.4 ounce. Heather denim-inspired fleece. Premium antique brass YKK #5 kissing zipper. Matching drawcord. 1x1 ribbing at cuffs and waist. Tear away label. Fashion fit.

ADULT: XS, S, M, L, XL, 2XL, 3XL.



# Raising Standards

## THE NEW FLEECE COLLECTION

### NEW! Next Level Apparel Unisex Fleece Crew with Pocket—9001

80% combed and ring-spun cotton/20% polyester. 9.2 ounce. (100% cotton face yarn.) Front pocket. Inside neck patch for printable label. Tear away label. Fashion Fit.

ADULT: XS, S, M, L, XL, 2XL, 3XL.

### NEW! Next Level Apparel Unisex Fleece Pullover Hoodie—9303

80% combed and ring-spun cotton/20% polyester. 9.2 ounce. Drawcord. Jersey lined hood. Ribbed cuffs and band. Inside neck patch for printable label. Tear away label. Fashion fit. 100% cotton face yarn.

ADULT: XS, S, M, L, XL, 2XL, 3XL.

BLACK	CARDINAL	FOREST GREEN
HEAVY METAL	MIDNIGHT NAVY	NATURAL
WHITE		

### NEW! Next Level Apparel Youth Zip Hoodie—9103

80% combed and ring-spun cotton/20% polyester. 9.2 ounce. Jersey lined hood. Inside neck patch for printable label. Tear away label. Retail youth fit.

100% cotton face yarn.

YOUTH: XS, S, M, L, XL.

### NEW! Next Level Apparel Unisex Zip Hoodie—9602

80% combed and ring-spun cotton/20% polyester. 9.2 ounce. Zipper. Drawcord. Jersey lined hood. Ribbed cuffs and band. Inside neck patch for printable label. Tear away label. Fashion fit.

100% cotton face yarn.

ADULT: XS, S, M, L, XL, 2XL, 3XL.

BLACK	CARDINAL	HEAVY METAL
MIDNIGHT NAVY	ROYAL	WHITE



9001



9303



9103



9602



3001

CRAFTED TEES FROM BELLA+CANVAS

*Wholesale that's never wholesale*

---



### BELLA+CANVAS Unisex Jersey Short Sleeve Tee—3001

100% airlume combed and ring-spun cotton, 30 single, 4.2 ounce jersey. Side-seamed. Shoulder taping. Tear-away label. Retail fit.

Athletic Heather and Black Heather are 90% airlume combed and ring-spun cotton/10% poly. All other Heather CVC Colors are 52% airlume combed and ring-spun cotton/48% poly.

ADULT: XS, S, M, L, XL, 2XL, 3XL.

### BELLA+CANVAS Women's The Favorite Tee—6004

100% airlume combed and ring-spun cotton, 30 single, 4.2 ounce jersey. Side-seamed. Shoulder taping. Longer body length. Fitted sleeves. Tear-away label. Slim fit.

Athletic Heather and Black Heather are 90% airlume combed and ring-spun cotton/10% poly. All other Heather CVC Colors are 52% airlume combed and ring-spun cotton/48% poly.

LADIES: S, M, L, XL, 2XL.

AQUA	ARMY	ASH	ASPHALT	ATHLETIC HEATHER
BABY BLUE	BERRY	BLACK	BLACK HEATHER	BROWN
BURNT ORANGE	CANVAS RED	CARDINAL	CHARITY PINK	CHOCOLATE
CORAL	DARK GREY	DARK GREY HEATHER	DEEP HEATHER	DEEP TEAL
EVERGREEN	FOREST	GOLD	HEATHER AQUA	HEATHER BLUE
HEATHER BROWN	HEATHER CARDINAL	HEATHER DEEP TEAL	HEATHER DUSTY BLUE	HEATHER FOREST
HEATHER GRASS GREEN	HEATHER GREEN	HEATHER KELLY	HEATHER MAUVE	HEATHER MIDNIGHT NAVY
HEATHER MILITARY GREEN	HEATHER MINT	HEATHER NAVY	HEATHER OLIVE	HEATHER ORANGE
HEATHER PEACH	HEATHER PINK	HEATHER PRISM DUSTY BLUE	HEATHER PRISM ICE BLUE	HEATHER PRISM LILAC
HEATHER PRISM MINT	HEATHER PRISM PEACH	HEATHER PRISM SUNSET	HEATHER PURPLE	HEATHER RASPBERRY
HEATHER RED	HEATHER SLATE	HEATHER STORM	HEATHER SUNSET	HEATHER TAN
HEATHER TEAM PURPLE	HEATHER TRUE ROYAL	HEATHER YELLOW GOLD	KELLY	LEAF
LIGHT BLUE	MAIZE YELLOW	MAROON	MAUVE	MILITARY GREEN
MINT	NATURAL	NAVY	OCEAN BLUE	OLIVE
ORANGE	OXBLOOD BLACK	PEBBLE BROWN	PINK	PLUM
RED	SEAFOAM BLUE	SILVER	SOFT CREAM	SOFT PINK
SOLID BLACK BLEND	SOLID WHITE BLEND	STEEL BLUE	STORM	SUNSET
TAN	TEAL	TEAM PURPLE	TRUE ROYAL	TURQUOISE
VINTAGE BLACK	WHITE	YELLOW		

**BELLA+CANVAS**  
LOS ANGELES



6004



3021



## Retail Jersey

PREFERRED FOR DTG PRINTING

### BELLA+CANVAS® Jersey Pocket Tee—3021

100% airlume combed and ring-spun cotton, 30 single, 4.2 ounce jersey. Left chest pocket. Side-seamed. Tear-away label. Retail Fit. Athletic Heather: 90% airlume combed and ring-spun cotton/10% polyester; other heathers 52% airlume combed and ring-spun cotton/48% polyester. ADULT: S, M, L, XL, 2XL.

ASPHALT	ATHLETIC HEATHER/NAVY	BLACK	BLACK/DEEP HEATHER
DARK GREY HEATHER	DARK GREY HEATHER/BLACK	DEEP HEATHER	HEATHER RED/DEEP HEATHER
HEATHER TRUE ROYAL/NAVY	NAVY	TRUE ROYAL	WHITE
WHITE/ATHLETIC HEATHER	WHITE/BLACK		

3006



### BELLA+CANVAS Men's Long Body Urban Tee—3006

100% airlume combed and ring spun cotton, 30 single, 4.2 ounce jersey. Side-seamed. Long body. Rounded bottom hem. Drop tail. Tear-away label. Retail fit.

Dark Grey Heather is made from 52% airlume combed and ring-spun cotton, 48% polyester, 30 single, 4.2 ounce jersey.

ADULT: S, M, L, XL, 2XL, 3XL.

BLACK	DARK GREY HEATHER	HEATHER OLIVE	WHITE
-------	-------------------	---------------	-------

**USA**  
**HYBRID**  
PRODUCTION

**BE DIFFERENT**





6400

## *The Relaxed Fit*

BETTER THAN YOUR BOYFRIEND'S

### **Bella+Canvas Ladies Relaxed Jersey Short Sleeve Tee—6400**

100% airlume combed and ring-spun cotton, 30 single, 4.2 ounce jersey. Side-seamed. Tear-away label. Relaxed fit.

Ath. Heather - 90% airlume combed and ring-spun cotton/10% poly.

Dark Grey Heather - 52% airlume combed and ring-spun cotton/48% poly.

Triblend colors - 50% poly/25% airlume combed and ring-spun cotton/25% rayon 40 singles 3.8 ounce.

**LADIES:** S, M, L, XL, 2XL.

### **Bella+Canvas Women's Relaxed Jersey Short Sleeve V-Neck Tee—6405**

100% airlume combed and ring-spun cotton, 30 single, 4.2 ounce jersey. Side-seamed. Tear-away label. Relaxed fit.

Dark Grey Heather is 52% airlume combed and ring-spun cotton, 48% poly.

Black Heather is 90% airlume combed and ring-spun cotton/10% poly.

**LADIES:** S, M, L, XL, 2XL.



6405

ASPHALT	ATHLETIC HEATHER	BERRY	BLACK
BLACK HEATHER	BLACK MINERAL WASH	CHARCOAL-BLACK TRIBLEND	DARK GREY HEATHER
DEEP HEATHER	GREY TRIBLEND	LEAF	NAVY
PINK	RED	RED TRIBLEND	TEAM PURPLE
TRUE ROYAL	TRUE ROYAL TRIBLEND	VINTAGE BLACK	WHITE





3200

#### BELLA+CANVAS Unisex ¾ Sleeve Baseball Tee—3200

52% airlume combed and ring-spun cotton/ 48% polyester, 40 single, 3.6 ounce jersey. Side-seamed. Contrasting raglan sleeves and neck trim. Tear-away label. Retail fit.

Triblend colors are 50% polyester/25% airlume combed and ring-spun cotton/25% Rayon, 40 single, 3.8 ounce. Marble colors are 91% polyester/ 9% airlume combed and ring-spun cotton. Black Heather is 90% airlume combed and ring-spun cotton/10% polyester.

ADULT: XS, S, M, L, XL, 2XL.

BLACK HEATHER BLACK	BLACK MARBLE BLACK	BLACK DEEP HEATHER	BLACK RED
BLACK WHITE	DEEP HEATHER BLACK	GREY CH-BL TRIBLEND	GREY EMERALD TRIBLEND
GREY MAROON TRIBLEND	GREY NAVY TRIBLEND	GREY TRUE ROYAL TRIBLEND	WHITE FLECK NAVY TRIBLEND
WHITE FLECK CH-BL TRIBLEND	WHITE ASPHALT	WHITE BLACK	WHITE DARK GREY
WHITE DEEP HEATHER	WHITE DENIM TRIBLEND	WHITE HEATHER OLIVE	WHITE HEATHER PEACH
WHITE KELLY	WHITE NAVY	WHITE NEON BLUE	WHITE NEON ORANGE
WHITE NEON PINK	WHITE NEON YELLOW	WHITE RED	WHITE TRUE ROYAL

#### BELLA+CANVAS Unisex Jersey Tank—3480

100% airlume combed and ring-spun cotton, 30 single, 4.2 ounce jersey. Side-seamed. Available in two-tone color options. Tear-away label. Retail fit.

Athletic Heather and Black Heather is 90% airlume combed and ring-spun cotton/10% polyester. All other Heather Colors are 52% airlume combed and ring-spun cotton/48% polyester. Neon Colors are 52% airlume combed and ring-spun cotton/48% polyester, 40 single 3.6 ounce. Triblend Colors are 50% polyester/25% airlume combed and ring-spun cotton/25% rayon, 40 single, 3.8 ounce.

UNISEX: XS, S, M, L, XL, 2XL.

AQUA TRIBLEND	ASH	ASPHALT	ATHLETIC HEATHER
ATHLETIC HEATHER/BLACK	ATHLETIC HEATHER/NAVY	BLACK	BLACK HEATHER
BLACK/ATHLETIC HEATHER	BLUE TRIBLEND	CHARCOAL-BLACK TRIBLEND	DARK GREY
DARK GREY HEATHER	DARK GREY/BLACK	DEEP HEATHER	DEEP HEATHER/ BLACK
DEEP HEATHER/ RED	GOLD	GREEN TRIBLEND	GREY TRIBLEND
KELLY	LEAF	NAVY	NEON BLUE
NEON GREEN	NEON ORANGE	NEON PINK	NEON YELLOW
OATMEAL TRIBLEND	ORANGE	PURPLE TRIBLEND	RED
RED TRIBLEND	SILVER	TEAL	TEAM PURPLE
WHITE	TRUE ROYAL	TRUE ROYAL TRIBLEND	WHITE FLECK TRIBLEND
WHITE/BLACK	WHITE/TRUE ROYAL		



3480





### Bella+Canvas Unisex Long Sleeve Tee—3501

Solid colors are 100% airlume combed and ring-spun cotton, 30 single, 4.2 ounce jersey. Side seamed. Tear-away label. Retail fit.

Triblend colors are 50% polyester/25% airlume combed & ring-spun cotton/25% rayon, 40 single, 3.8 ounce. Black Heather is 90% airlume combed and ring-spun cotton/10% polyester. Heather Cardinal is 52% airlume combed and ring-spun cotton/48% polyester.

ADULT: XS, S, M, L, XL, 2XL.

ASH	ASPHALT	ATHLETIC GREY TRIBLEND	ATHLETIC HEATHER	BLACK	BLACK HEATHER
CARDINAL	CHARCOAL BLACK SLUB	CHARCOAL-BLACK TRIBLEND	DARK GREY	DARK GREY HEATHER	DEEP HEATHER
GREY TRIBLEND	HEATHER BROWN	HEATHER CARDINAL	HEATHER NAVY	MAROON TRIBLEND	MILITARY GREEN
NAVY	NAVY TRIBLEND	OLIVE	RED	SOLID BLACK SLUB	SOLID BLACK TRIBLEND
STORM	TRUE ROYAL	TRUE ROYAL TRIBLEND	WHITE		

**BELLA+CANVAS.**  
LOS ANGELES





*Triblend*  
SIGNATURE SOFTNESS

**BELLA+CANVAS Unisex Triblend Short Sleeve Tee—3413**  
50% polyester/25% airlume combed and ring-spun cotton/25% rayon,  
40 single, 3.8 ounce. Side-seamed. Tear-away label. Retail fit.  
ADULT: S, M, L, XL, 2XL, 3XL, 4XL.

**BELLA+CANVAS Women's Triblend Short Sleeve Tee—8413**  
50% polyester/25% airlume combed and ring-spun cotton/25% rayon,  
40 single, 3.8 ounce. Side-seamed. Tear-away label. Semi-relaxed fit.  
LADIES: S, M, L, XL, 2XL.

AQUA TRIBLEND	ATHLETIC GREY TRIBLEND	BERRY TRIBLEND	BLACK HEATHER TRIBLEND	BLUE TRIBLEND	BROWN TRIBLEND	CARDINAL TRIBLEND	CHARCOAL-BLACK TRIBLEND	CLAY TRIBLEND
DENIM TRIBLEND	EMERALD TRIBLEND	GRASS GREEN TRIBLEND	GREEN TRIBLEND	GREY TRIBLEND	LIGHT RED TRIBLEND	MAROON TRIBLEND	MAUVE TRIBLEND	MILITARY GREEN TRIBLEND
MINT TRIBLEND	NAVY TRIBLEND	OATMEAL TRIBLEND	OLIVE TRIBLEND	ORANGE TRIBLEND	PURPLE TRIBLEND	RED TRIBLEND	SEA GREEN TRIBLEND	SOLID BLACK TRIBLEND
SOLID DARK GREY TRIBLEND	SOLID FOREST TRIBLEND	SOLID MAROON TRIBLEND	SOLID NAVY TRIBLEND	SOLID RED TRIBLEND	SOLID WHITE TRIBLEND	STEEL BLUE TRIBLEND	STORM TRIBLEND	SUNSET TRIBLEND
TAN TRIBLEND	TRUE ROYAL TRIBLEND	WHITE FLECK TRIBLEND	YELLOW GOLD TRIBLEND					





BE DIFFERENT

8803



8804

USA  
HYBRID  
PRODUCTION

## Go with the flow

### FLOWY COLLECTION FROM BELLA+CANVAS

#### BELLA+CANVAS Women's Flowy Scoop Muscle Tank—8803

65% polyester/ 35% viscose, 30 single, 3.7 ounce. Side-seamed. Low cut armhole. Curved bottom hem. Tear-away label. Relaxed, drapey fit.

Athletic Heather is 52% polyester/48% viscose. Marble colors are 91% polyester/ 9% airlume combed and ring-spun cotton, 40 single, 3.5 ounce fabric. Slub colors are 50% polyester/37.5% airlume combed and ring-spun cotton/12.5% rayon, 30 single, 4.0 ounce.

LADIES: S, M, L, XL, 2XL.

#### NEW! Bella+Canvas Flowy Muscle Tee with Rolled Cuff—8804

65% polyester/35% viscose jersey. Rolled cuff. Raw edge trim. Side-seamed. Tear-away label. Relaxed, drapey fit.

LADIES: S, M, L, XL, 2XL.

ASPHALT SLUB	ATHLETIC HEATHER	BLACK	BLACK MARBLE	CHARCOAL BLACK SLUB	DARK GREY HEATHER	DENIM SLUB	DUSTY BLUE	FOREST MARBLE
HEATHER DEEP TEAL	HEATHER DUST	HEATHER NAVY	HEATHER OLIVE	HEATHER STONE	MAROON	MAUVE	MAUVE MARBLE	MAUVE SLUB
MIDNIGHT	MILITARY GREEN	MINT	NATURAL SLUB	OLIVE SLUB	PEACH	PEACH SLUB	RED	SOLID BLACK SLUB
STONE MARBLE	STORM	SUNSET	TEAL	TRUE ROYAL	TRUE ROYAL MARBLE	WHITE	WHITE MARBLE	WHITE SLUB





**BELLA+CANVAS Women's Flowy Racerback Tank—8800**  
65% polyester/ 35% viscose, 30 single, 3.7 ounce. Side-seamed. Merrowed bottom hem. Shirring at racerback seam. Relaxed, drapey fit. Athletic Heather is 52% polyester/48% viscose. Marble Colors are 91% polyester/ 9% airlume combed and ring-spun cotton, 40 single, 3.5 ounce. Slub colors are 50% polyester/37.5% airlume combed and ring-spun cotton/12.5% rayon, 30 single, 4.0 ounce.  
**LADIES:** XS, S, M, L, XL, 2XL.

**Bella+Canvas Women's Flowy Side Slit Tank—8802**  
65% polyester/ 35% viscose, 30 single, 3.7 ounce. Side-seamed. Side slit. Tear away label. Relaxed, drapey fit.  
**LADIES:** S, M, L, XL, 2XL.

ATHLETIC HEATHER	ATHLETIC HEATHER/ NEON PINK	ATHLETIC HEATHER/ WHITE	BERRY	BLACK	BLACK HEATHER	BLACK MARBLE	BLUE MARBLE	CHARCOAL BLACK SLUB
CORAL	DARK GREY	DARK GREY HEATHER	DENIM SLUB	FOREST MARBLE	HEATHER DEEP TEAL	HEATHER NAVY	KELLY	MAROON
MAUVE	MAUVE MARBLE	MIDNIGHT	MILITARY GREEN	MINT	NEON PINK	NEON YELLOW	PEACH	PEACH SLUB
PEBBLE BROWN	RED	RED MARBLE	SOFT PINK	SOLID BLACK SLUB	STORM	TEAL	TRUE ROYAL	TRUE ROYAL MARBLE
WHITE	WHITE MARBLE	WHITE SLUB						



*Not your  
average blanks*

FASHION-FORWARD STYLES  
FROM BELLA+CANVAS

**NEW! Bella+Canvas Flowy High  
Neck Tank—8809**

65% polyester/35% viscose,  
32 single, 3.7 ounce. High neck.  
Back seam. Side-seamed. Tear-  
away label. Relaxed, drapey fit.  
LADIES: S, M, L, XL, 2XL.

BLACK	DARK GREY HEATHER
HEATHER STONE	MAUVE
PEACH	WHITE

**BELLA+CANVAS.**  
LOS ANGELES

8809







**BELLA+CANVAS® Ladies Slouchy Tee—8816**  
65% polyester/35% viscose, 30 singles 3.7 ounce. Subtle curved bottom hem. Scoop neck. Side-seamed. Tear-away label. Relaxed, drapey fit. Marble colors 91% polyester/9% airlume combed and ring-spun cotton, 40 singles 3.5 ounce.  
**LADIES:** S, M, L, XL, 2XL.

**BELLA+CANVAS Women's Slouchy Tank—8838**  
65% polyester/35% viscose, 30 single, 3.7 ounce. Side-seamed. Tear-away label. Slouchy fit. Slub colors are 50% polyester/37.5% airlume combed and ring-spun cotton/12.5% rayon, 30 single, 4.0 ounce. Triblend colors are 50% polyester/25% airlume combed and ring-spun cotton/25% rayon, 40 single, 3.8 ounce.  
**LADIES:** S, M, L, XL, 2XL.

ASPHALT SLUB	ATHLETIC HEATHER	BERRY	BLACK
BLACK MARBLE	BLACK SLUB	BLACK SPECKLED	BLUE TRIBLEND
CHARCOAL BLACK TRIBLEND	DARK GREY	DARK GREY HEATHER	DEEP HEATHER SPECKLED
GREY TRIBLEND	HEATHER OLIVE	KELLY	MAROON MARBLE
MIDNIGHT	MINT	NAVY SPECKLED	NAVY TRIBLEND
RED	RED MARBLE	RED SPECKLED	RED TRIBLEND
TRUE ROYAL	TRUE ROYAL TRIBLEND	WHITE	WHITE FLECK TRIBLEND
WHITE MARBLE	WHITE SLUB		

ASPHALT SLUB	ATHLETIC HEATHER	BLACK	BLACK HEATHER
BLACK MINERAL WASH	BLACK SLUB	BLUE TRIBLEND	CHARCOAL BLACK TRIBLEND
CORAL	DARK GREY HEATHER	DUSTY BLUE	GREY TRIBLEND
HEATHER DEEP TEAL	HEATHER DUST	HEATHER NAVY	HEATHER OLIVE
HEATHER STONE	MAUVE	MIDNIGHT	MINT
RED	RED TRIBLEND	TRUE ROYAL	TRUE ROYAL TRIBLEND
WHITE	WHITE SLUB		

BE DIFFERENT

**BELLA+CANVAS Women's Flowy Long Sleeve  
Off Shoulder Tee—8850**

65% polyester/ 35% viscose, 30 single, 3.7 ounce.  
Side-seamed. Rib cuffs and waistband. Seam up  
center back. Dolman sleeves. Tear-away label.  
Relaxed, drapey fit.

**LADIES:** XS, S, M, L, XL, 2XL.

ATHLETIC HEATHER	BLACK	BLACK MARBLE
BLUE MARBLE	DARK GREY	DARK GREY HEATHER
MAROON	MIDNIGHT	NEON PINK
NEON YELLOW	PEBBLE BROWN	RED
WHITE	WHITE MARBLE	



**USA**  
**HYBRID**  
PRODUCTION



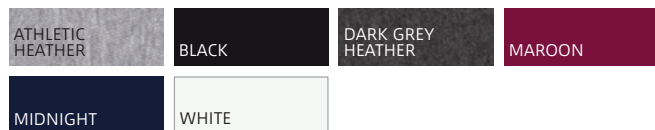


8852

**Bella+Canvas Ladies Flowy Long Sleeve Tee with 2x1 Sleeves—8852**

65% polyester/35% viscose, 30 singles, 3.7 ounce. Flowy t-shirt with 2x1 polyester/viscose ribbed sleeves. Curved bottom hem. Drop shoulder. Side-seamed. Tear-away label. Relaxed, drapey fit.

LADIES: S, M, L, XL, 2XL.



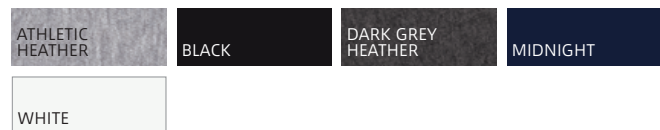
8855

**BELLA+CANVAS Women's Flowy Long Sleeve V-Neck Tee—8855**

65% polyester/35% viscose, 30 single, 3.7 ounce. Side-seamed. Tear-away label. Relaxed, drapey fit.

Athletic Heather is 52% polyester, 48% viscose.

LADIES: S, M, L, XL, 2XL.







3650

## Texture

BLANK TEES DON'T HAVE TO BE BORING

### BELLA+CANVAS Unisex Poly-Cotton Short Sleeve Tee—3650

52% airlume combed and ring-spun cotton/48% polyester, 40 single, 3.6 ounce jersey. Side-seamed. Tear-away label. Retail fit.

Marble colors are 91% polyester/9% airlume combed and ring-spun cotton, 30 single 4.0 ounce. Grey Acid Wash is 52% airlume combed and ring-spun cotton/48% polyester, 30 single, 4.4 ounce.

ADULT: XS, S, M, L, XL, 2XL.

**BELLA+CANVAS.**  
LOS ANGELES

ASPHALT SLUB	BLACK ACID WASH	BLACK MARBLE	BLACK MINERAL WASH	BLACK SPECKLED
CHARCOAL BLACK SLUB	CHARCOAL MARBLE	DEEP HEATHER SPECKLED	DENIM SLUB	FOREST MARBLE
GREY ACID WASH	MAROON MARBLE	MAUVE MARBLE	MAUVE SLUB	NATURAL SLUB
NAVY MARBLE	NAVY SLUB	NAVY SPECKLED	OLIVE SLUB	PEACH SLUB
RED ACID WASH	RED SPECKLED	SOLID BLACK SLUB	STONE MARBLE	TRUE ROYAL ACID WASH
TRUE ROYAL MARBLE	WHITE MARBLE	WHITE SLUB		





3901



3739



3939

## Street-style Fleece

FASHION MEETS COMFORT

### BELLA+CANVAS Unisex Sponge Fleece Raglan Sweatshirt—3901

50% polyester/37.5% airlume combed and ring-spun cotton/12.5% rayon, 30 single 8.2 ounce. Kangaroo pockets. Rib cuffs and waistband. Pre-launched triblend sponge fleece. Sideseamed. Retail fit.

UNISEX: XS, S, M, L, XL, 2XL.

ATHLETIC HEATHER	BLACK	CARDINAL TRIBLEND	DARK GREY
DARK GREY HEATHER	DARK GREY MARBLE FLEECE	DEEP HEATHER NAVY	GREY ACID FLEECE
GREY TRIBLEND	HEATHER FOREST	HEATHER NAVY	LIGHT GREY MARBLE FLEECE
NAVY TRIBLEND	RED	RED MARBLE FLEECE	TRUE ROYAL

### BELLA+CANVAS Unisex Poly-Cotton Full-Zip Hoodie—3739

60% airlume combed and ring-spun cotton/40% polyester, 30 single, 6.5 ounce. Sponge fleece. Side-seamed. Ribbed cuffs and waistband. Full zip closure with white taping. Kangaroo pockets. Tear-away label. Retail fit.

Marble fleece colors are 85% airlume combed and ring-spun cotton/15% polyester.

UNISEX: XS, S, M, L, XL, 2XL.

ASPHALT	ATHLETIC HEATHER	ATH. HEATHER NAVY	BLACK
CORAL	DARK GREY	DARK GREY HEATHER	DK.GR.HTHR BLACK
DARK GREY MARBLE FLEECE	DEEP HEATHER	HEATHER FOREST	HEATHER NAVY
HEATHER SLATE	HEATHER STONE	HEATHER TRUE ROYAL	KELLY
LIGHT GREY MARBLE FLEECE	MAROON	MAUVE	MILITARY GREEN
NAVY	NEON BLUE	NEON PINK	NEON YELLOW
PEACH	RED	RED MARBLE FLEECE	STORM
TEAL	TEAM PURPLE	TRUE ROYAL	WHITE

### BELLA+CANVAS Unisex Triblend Full-Zip Lightweight Hoodie—3939

50% polyester/ 25% airlume combed and ring-spun cotton/25% rayon, 30 single 5.6 ounce. No drawstring. 1x1 smooth ribbed fabric. Sideseamed. Tear-away label. Retail fit.

UNISEX: XS, S, M, L, XL, 2XL.

BLUE TRIBLEND	CHARCOAL BLACK TRIBLEND	EMERALD TRIBLEND	GREY TRIBLEND
MAROON TRIBLEND	NAVY TRIBLEND	RED TRIBLEND	SOLID BLACK TRIBLEND
SOLID DARK GREY TRIBLEND	TEAL TRIBLEND	TRUE ROYAL TRIBLEND	

BE DIFFERENT



7501

#### BELLA+CANVAS® Sponge Fleece Wide Neck Sweatshirt—7501

50% polyester/37.5% airlume combed and ring-spun cotton/12.5% rayon, 30 singles 8.2 ounce. Pre-laundered sponge fleece wide neck sweatshirt. 1x1 rib neckline. Wide rib cuffs and waistband. Side-seamed. Tear-away label. Relaxed fit.

Black 60% combed and ring-spun cotton/40% polyester, 30 singles 6.5 ounce. Grey Acid Fleece 60% combed and ring-spun cotton/40% polyester, 30 singles 7.3 ounce.

\*Due to specialized washing process, each garment is unique for grey acid fleece.

LADIES: S, M, L, XL, 2XL.

BLACK	BLUE TRIBLEND	CARDINAL TRIBLEND	CHARCOAL-BLACK TRIBLEND
DARK GREY MARBLE FLEECE	DEEP HEATHER	DEEP HEATHER BLACK	DEEP HEATHER NAVY
GREY ACID FLEECE	LIGHT GREY MARBLE FLEECE	NAVY	NAVY TRIBLEND
RED	RED MARBLE FLEECE	SOLID BLACK TRIBLEND	SOLID WHITE TRIBLEND
TEAL	TRUE ROYAL		



3909

#### BELLA+CANVAS® Unisex Triblend Sponge Fleece Full Zip Hoodie—3909

50% polyester/37.5% airlume combed and ring-spun cotton/12.5% rayon, 30 singles 8.2 ounce. Pre-laundered triblend sponge fleece full zip hoodie. Unique fabric combination creates an extremely soft hand that will make this your new favorite sweatshirt. Kangaroo pockets. Natural drawcord. Tear-away label. Retail fit.

UNISEX: XS, S, M, L, XL, 2XL.

BLUE TRIBLEND	CARDINAL TRIBLEND	CHARCOAL-BLACK TRIBLEND	GREY TRIBLEND
NAVY TRIBLEND	SOLID BLACK TRIBLEND		

**USA**  
HYBRID  
PRODUCTION





100B



3001B



134B

# Oh Baby!

## GREAT FASHIONS FOR YOUR NEW ARRIVALS

**NEW! Bella+Canvas Baby Jersey Short Sleeve One Piece—100B**  
100% airlume combed and ring-spun cotton, 30 single, 4.2 ounce. Side-seamed. Tear-away label. Retail infant fit.  
**BABY:** 3-6M, 6-9M, 12-18M, 18-24M.

**NEW! BELLA+CANVAS Baby Jersey S/S Crew—3001B**  
100% airlume combed and ring-spun cotton, 32 single, 4.2 ounce. Sideseamed. Tear-away label. Retail infant fit.  
**BABY:** 3-6M, 6-12M, 12-18M, 18-24M.

ASPHALT	ATHLETIC HEATHER	BLACK	DARK GREY HEATHER
HEATHER COLUMBIA BLUE	HEATHER MAROON	HEATHER STONE	NAVY
PINK	TRUE ROYAL	WHITE	YELLOW

**NEW! Baby Triblend Onesie—134B**  
50% polyester/ 25% airlume combed and ring-spun cotton/25% rayon, 40 single, 3.8 ounce. Sideseamed. Tear-away label. Retail infant fit.  
**BABY:** 3-6M, 6-12M, 12-18M, 18-24M.

BLUE TRIBLEND	CHARCOAL-BLACK TRIBLEND	GREY TRIBLEND	ICE BLUE TRIBLEND
MAUVE TRIBLEND	OLIVE TRIBLEND	PEACH TRIBLEND	



**BELLA+CANVAS Youth Jersey Short Sleeve Tee—3001Y**

100% airlume combed and ring-spun cotton, 30 single, 4.2 ounce jersey. Side-seamed. Tear-away label. Retail fit.

Heather CVC colors are 52% airlume combed and ring-spun cotton/48% polyester. Neon colors are 52% airlume combed and ring-spun cotton/48% polyester, 40 single 3.6 ounce fabric. Triblend Colors are 50% polyester/25% airlume combed and ring-spun cotton/25% rayon, 40 single, 3.8 ounce. Athletic Heather and Black Heather are 90% airlume combed and ring-spun cotton/10% polyester.

Please note: Triblend colors also referred to as style 3413Y.

YOUTH: S(6/8), M(10/12), L(14/16).

**NEW! BELLA+CANVAS Toddler Jersey S/S Crew—3001T**

100% airlume combed and ring-spun cotton, 32 single, 4.2 ounce. Sideseamed. Tear-away label. Retail toddler fit.

TODDLER: 2T, 3T, 4T, 5T.

ASPHALT	ATHLETIC HEATHER	BERRY	BLACK
BLACK HEATHER	BLUE TRIBLEND	CHARCOAL-BLACK TRIBLEND	DARK GREY
DARK GREY HEATHER	DEEP HEATHER	GREEN TRIBLEND	GREY TRIBLEND
HEATHER COLUMBIA BLUE	HEATHER FOREST	HEATHER MAROON	HEATHER NAVY
HEATHER STONE	KELLY	NAVY	NEON BLUE
NEON GREEN	NEON ORANGE	NEON PINK	NEON YELLOW
PINK	RED	RED TRIBLEND	TEAM PURPLE
TRUE ROYAL	TRUE ROYAL TRIBLEND	WHITE	YELLOW

**NEW! BELLA+CANVAS Toddler Raglan Tee—3200T**

52% airlume combed and ring-spun cotton/ 48% polyester, 40 single, 3.6 ounce jersey. Contrast raglan sleeves and neck trim. Sideseamed. Tear-away label. Retail toddler fit.

TODDLER: S, M, L.

			
BLACK/WHITE	DEEP HEATHER/BLACK	GREY/CHARCOAL-BLACK TRIBLEND	GREY/NAVY TRIBLEND
			
GREY/RED TRIBLEND	WHITE/BLACK	WHITE/DENIM	WHITE/HEATHER PEACH
			
WHITE/NAVY	WHITE/RED		

**NEW! BELLA+CANVAS Toddler Triblend S/S Crew—3413T**

50% polyester/25% airlume combed and ring-spun cotton/25% rayon, 40 single, 3.8 ounce. Sideseamed. Tear-away label. Retail toddler fit.

TODDLER: 2T, 3T, 4T, 5T.

BLUE TRIBLEND	CHARCOAL-BLACK TRIBLEND	GREEN TRIBLEND	GREY TRIBLEND
ICE BLUE TRIBLEND	MAUVE TRIBLEND	OLIVE TRIBLEND	PEACH TRIBLEND
RED TRIBLEND	TRUE ROYAL TRIBLEND		



**BE DIFFERENT**

**USA**  
HYBRID  
PRODUCTION





## LONG-SLEEVED WOVENS.

*from* BURNSIDE® APPAREL

GET TO KNOW WOVENS *from* BURNSIDE® APPAREL

Fresh woven long-sleeved shirts for wherever life takes you. Mad about plaid? We got you covered with flannels and lighter weight blends. Or, keep things solid with the long sleeve 8200.





8202



5222



8200

**NEW! Burnside® Ladies Woven Plaid Flannel—5210**

100% cotton, 5.4 ounce. Two chest pockets with button flaps. Hem bottom. Button cuffs. Half back yoke. Elongated tail. Ladies fit.

LADIES: S, M, L, XL, 2XL, 3XL.



**NEW! Burnside® Woven Plaid Flannel—8210**

80% cotton/20% polyester, 5.4 ounce. Two chest pockets with button flaps. Hem bottom. Button cuffs. Roll up sleeves with placket. Half back yoke. Modern fit.

ADULT: S, M, L, XL, 2XL, 3XL.



**NEW! Burnside® Plaid Pattern Long Sleeve—8202**

55% cotton/45% polyester, 3.0 ounce. Two chest pockets with button flaps. Two-piece back yoke. Pearlized buttons. Adjustable button cuffs. Modern fit.

ADULT: S, M, L, XL, 2XL, 3XL.



**NEW! Burnside® Plaid Pattern Woven Ladies Long Sleeve—5222**

55% cotton/45% polyester, 3.0 ounce. Two chest pockets with button flaps. Two-piece back yoke. Pearlized buttons. Roll-up sleeve placket just for the ladies. Ladies fit.

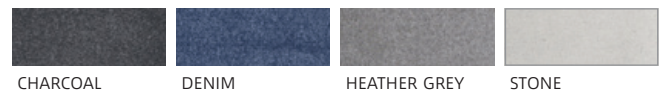
LADIES: S, M, L, XL, 2XL.



**NEW! Burnside® Long Sleeve Flannel Shirt—8200**

80% cotton/20% polyester, 5.4 ounce. Two chest pockets with button-down flaps. Adjustable cuffs. Half moon back yoke with locker loop. Modern fit.

ADULT: S, M, L, XL, 2XL, 3XL.







PRM4500

**SPECIALTY FABRICS.  
PREMIUM QUALITY.  
DURABILITY.**

*from* INDEPENDENT TRADING CO.

**NEW! UNISEX MIDWEIGHT PIGMENT DYED HOODED PULLOVER—  
PRM4500**

100% cotton, 30 single, 9 ounce. Jersey lined hood. Split stitch double needle sewing on all seams. Twill neck tape. 1X1 ribbing at neck, cuffs and waistband. Sewn eyelets. Standard fit. Please note: The pigment-dyeing process gives each garment unique character. Please allow for slight color variation in production and washing

UNISEX: XS, S, M, L, XL, 2XL, 3XL.

PIGMENT  
ALPINE GREEN

PIGMENT  
BLACK

PIGMENT LIGHT  
BLUE

PIGMENT  
MAROON

PIGMENT  
MINT

PIGMENT  
PINK

PIGMENT  
SANDSTONE

PIGMENT SLATE  
BLUE

PIGMENT  
YELLOW

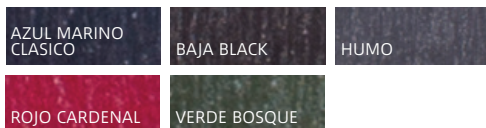


**Independent Trading Company Baja Stripe French Terry Pullover Hood—PRM22BP**

85% cotton/ 15% polyester, 8.0 ounce. Unlined hood. Split stitch double-needle sewing. 1x1 ribbing at cuffs and waistband. Sewn eyelets. Twill neck tape. Front pouch pocket. Fashion fit.  
UNISEX: XS, S, M, L, XL, 2XL, 3XL.

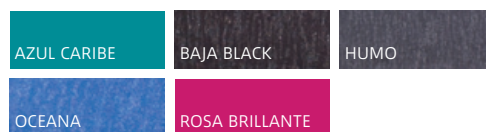
**Independent Trading Co. Baja Stripe French Terry Zip Hood—PRM22BZ**

85% cotton/15% polyester, 8 ounce. Split stitch double-needle sewing throughout. Finished with #5 YKK antique metal kissing zipper, twill neck tape and front pouch pockets. Fashion fit.  
UNISEX: XS, S, M, L, XL, 2XL, 3XL.



**Independent Trading Co. Ladies Baja Stripe French Terry Zip Hood—PRM655BZ**

85% cotton/15% polyester, 8 ounce. Split stitch double-needle sewing throughout. Finished with #5 YKK antique metal kissing zipper, twill neck tape and front pouch pockets. Ladies fit.  
LADIES: S, M, L, XL.



PRM22BP



PRM22BZ



PRM655BZ





PRM30SBC

PRM33SBZ

## Special Blend

YOU'VE NEVER FELT FLEECE THIS SOFT

### Independent Trading Co. Unisex Special Blend Full Zip Hoodie—PRM33SBZ

52% polyester/48% cotton, 30 single, 8 ounce. Raglan sleeves. Reverse cover stitch sewing. 1x1 ribbing at cuffs and waistband. Front pouch pocket. Fashion fit.

UNISEX: XS, S, M, L, XL, 2XL.

### Independent Trading Co. Unisex Special Blend Crew—PRM30SBC

52% polyester/48% cotton, 30 single, 8 ounce. Raglan sleeves. Reverse cover stitch sewing. Side gusset for preferred fit and comfort. 1x1 ribbing at neck, cuffs and waistband. Fashion fit.

UNISEX: S, M, L, XL, 2XL, 3XL.

### Independent Trading Co. Unisex Special Blend Hoodie—PRM33SBP

52% polyester/48% cotton, 30 single, 8 ounce. Raglan sleeves. Reverse cover stitch sewing. Side gusset for preferred fit and comfort, 1x1 ribbing at cuffs and waistband. Fashion fit.

UNISEX: XS, S, M, L, XL, 2XL, 3XL.



PRM33SBP

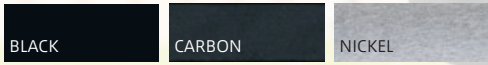
BLACK	CARBON	CLASSIC NAVY	CRIMSON
CRIMSON HEATHER	MAROON	MIDNIGHT NAVY	MOSS
MOSS HEATHER	NICKEL	PACIFIC	POMEGRANATE
SEA GREEN			



PRM65DRS

**Independent Trading Co. Special Blend Dress—  
PRM65DRS**

52% polyester/48% cotton, 30 single, 8 ounce.  
Split stitch double needle sewing, 1x1 ribbing at  
cuffs and waistband, two drawcord colors, front  
pocket pouch, thumbholes at cuffs. Ladies fit.  
LADIES: XS, S, M, L, XL.

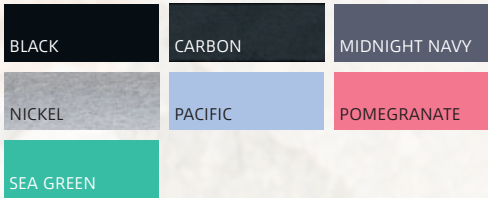


**INDBKTSB**



**Independent Trading Co. Special Blend  
Blanket—INDBKTSB**

52% polyester/48% cotton, 30 single, 8 ounce.  
Included with 1 natural colored drawcord  
with antique finish metal tips. 1" self hem  
with double needle top stitch sewing on all  
four edges.  
SIZE: 58"X84".







PRM90HTZ

# Get Frenched

## LIGHTWEIGHT FRENCH TERRY FLEECE

### Independent Trading Co. Unisex French Terry Zip Hood—PRM90HTZ

80% cotton/20% polyester, 32 single, 7.5 ounce. Three color yarn dye for optimal color. Flat contrasting drawcord with steel metal tip. Ipod/Iphone holder with cord eyelet in front pouch pocket. Thumb hole detail at cuffs. Fashion fit.

UNISEX: S, M, L, XL, 2XL.

PRM90HT



### Independent Trading Co. Unisex French Terry Hood—PRM90HT

70% cotton/30% polyester, 32 single, 7.5 ounce. Two antique-nickel tipped flat drawcords. Unlined hood and twill neck tape. Fashion fit.

Black and Charcoal Heather - 55% cotton/45% polyester. UNISEX: XS, S, M, L, XL, 2XL.

BLACK	BURGUNDY HEATHER	BURNT ORANGE HEATHER
CHARCOAL HEATHER	GOLDEN WHEAT HEATHER	NAVY HEATHER
OATMEAL HEATHER	OLIVE HEATHER	SALT & PEPPER
SKY HEATHER		



# Independent Collection

BENCHMARK IN STYLE, QUALITY, AND FIT

## Independent Trading Co. Raglan Pullover Hoodie—IND40RP

55% cotton/45% polyester, 7 ounce. Raglan sleeves. Split stitch double-needle sewing throughout. Jersey lined hood with nickel eyelets and flat drawcord. 1x1 ribbing at cuffs and waistband. Twill neck tape. Front pouch pocket. Fashion fit.

ADULT: S, M, L, XL, 2XL 3XL.

IND40RP



CHARCOAL HEATHER/ARMY HEATHER



CHARCOAL HEATHER/BLACK



CHARCOAL HEATHER/BURGUNDY HEATHER



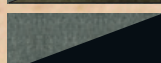
CHARCOAL HEATHER/CLASSIC NAVY HEATHER



CHARCOAL HEATHER/ROYAL HEATHER



GUNMETAL HEATHER/ARMY HEATHER



GUNMETAL HEATHER/BLACK



GUNMETAL HEATHER/BURGUNDY HEATHER



GUNMETAL HEATHER/CHARCOAL HEATHER



GUNMETAL HEATHER/CLASSIC NAVY HEATHER







# The Original

PREMIUM HEAVYWEIGHT

**Independent Trading Company Hooded Sweatshirt—IND4000**  
80% cotton/20% polyester, 32 single, 10 ounce. 100% cotton face yarn. 1x1 ribbing, nickel eyelets, matching twill neck tape, split-stitch double-needle sewing on all seams. Fleece lined hood and a front pouch pocket. Conservative fit.  
**ADULT:** S, M, L, XL, 2XL, 3XL.



**Independent Trading Company Full Zip Hooded Sweatshirt—IND4000Z**  
80% cotton/20% polyester, 32 single, 10 ounce. 100% cotton face yarn. 1x1 ribbing, nickel eyelets, nickel kissing zipper, matching twill neck tape, split-stitch double-needle sewing on all seams. Fleece lined hood. Conservative fit.  
**ADULT:** S, M, L, XL, 2XL, 3XL (Black is available through size 6XL).

ALPINE GREEN	ARMY	ARMY CAMO	BLACK
CARDINAL	CHARCOAL	CHARCOAL HEATHER	CHARCOAL HEATHER BLACK
CHARCOAL HEATHER	CURRENT	CURRENT	DARK GREEN
CHARCOAL HEATHER	CURRENT	DARK GREEN	FOREST CAMO
GREY HEATHER	GREY HEATHER	GUNMETAL HEATHER	LIGHT PINK
GREY HEATHER	GREY HEATHER	GUNMETAL HEATHER	LIGHT PINK
MAROON	MINT	NAVY	RED
ROYAL BLUE	SADDLE	SANDSTONE	SLATE BLUE
SNOW CAMO	WHITE		





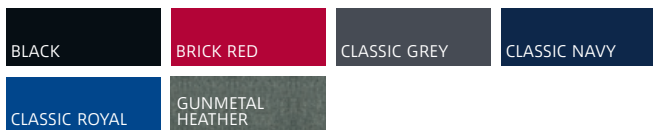
# The Expedition Collection

WARM - FUNCTIONAL - DURABLE - QUALITY

## Independent Trading Co. Poly-Tech Hoodie—EXP444PP

100% polyester water-resistant, 10 ounce. 80% cotton/20% polyester fleece body. With an unlined hood, split stitch double needle sewing on all seams, 1x1 ribbing at cuffs and waistband, nickel eyelets, and flat drawcord. Fashion fit.

ADULT: XS, S, M, L, XL, 2XL, 3XL.



EXP80PTZ

## Independent Trading Co. Poly-Tech Zip Hooded Sweatshirt—EXP80PTZ

80% polyester/20% cotton, 10 ounce. 100% polyester pique contrast panels. 100% anti-pill polyester face. Water-resistant fleece body. Removable zip off hood with interior cadet collar. Contrast color neck tape. #5 exposed coil zipper, antique nickel drawcord tips and eyelets. 1x1 ribbing at cuffs and waistband. Mp3 holder and eyelet in front welt pocket. Thumbhole detail at cuffs. Conservative fit.

ADULT: XS, S, M, L, XL, 2XL.

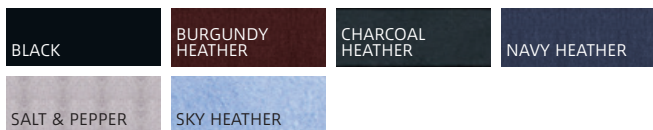


## NEW! Independent Trading Co. Unisex Sherpa Lined Zip Hood—EXP90SHZ

70% cotton/30% polyester, 32 single, 7.5 ounce. 100% polyester, 4.7 ounce sherpa lined interior (not bonded). Two antique-nickel tipped flat drawcords. Exposed zipper. Antique-nickel eyelets. Split-front pouch pockets. Thumbholes at cuffs. Fashion fit.

Black & Charcoal Heather - 55% cotton/45% polyester.

UNISEX: S, M, L, XL, 2XL.



EXP444PP



EXP90SHZ





EXP54LWZ



EXP94NAW

**NEW! Independent Trading Co. Men's Lightweight Waterproof Windbreaker—EXP54LWZ**

100% polyester lightweight woven waterproof fabric. Matte finish eyelets and zippers, #4 zipper with rubber zipper pull tab, fine mesh hood liner, three panel hood, welt pockets with mesh pocket bags, tightening toggle at waistband, elastic cuffs, locker loop in center back neck. Fashion fit.

ADULT: XS, S, M, L, XL, 2XL, 3XL.

BLACK	BLACK/ FOREST CAMO	BLACK/ GRAPHITE	BLACK/ WHITE
CLASSIC NAVY	CLASSIC NAVY/ SADDLE	CLASSIC NAVY/ WHITE	FOREST CAMO
GRAPHITE	MAROON		

**NEW! Independent Trading Co. Men's Water Resistant Windbreaker Anorak Jacket—EXP94NAW**

100% nylon 330D with waterproofing coating, nylon outer shell: waterproof coating = Level 3; inner pu coating: breathability/permeability = 5,000; water pressure resistance = 10,000DTM; neck taping, #5 DTM body coil zipper, matte metal zipper pull, rubber zipper pull tab, zipper garage, fine mesh hood liner, matte nickel metal eyelets, 3 panel hood, scuba neck, round poly drawstring, hidden snaps inside front pocket flap, side slit pockets, tightening toggle at waistband, elastic cuffs.

ADULT: XS, S, M, L, XL, 2XL, 3XL.

BLACK	CLASSIC NAVY	FOREST CAMO	GRAPHITE
-------	--------------	-------------	----------



# Standard Supply Collection

STANDARD IN STYLE, QUALITY, AND FIT

## Independent Trading Co. Hooded Sweatshirt—SS4500

80% cotton/20% polyester, 20 single, 8.5 ounce. 100% cotton face yarn. 1x1 ribbing at cuffs and waistband, metal eyelets, matching twill neck tape, split stitch double-needle sewing on all seams. Jersey lined hood. Fashion fit.

Charcoal Heather, Classic Navy Heather & Royal Heather - 55% cotton/45% polyester. Grey Heather - 75% cotton/25% polyester.

ADULT: XS, S, M, L, XL, 2XL, 3XL.

ALPINE GREEN	ARMY HEATHER	BLACK	CHARCOAL
CHARCOAL HEATHER	CLASSIC NAVY	CLASSIC NAVY HEATHER	GREY HEATHER
GUNMETAL HEATHER	LIGHT PINK	MAROON	MINT
NAVY HEATHER	RED	ROYAL	ROYAL HEATHER
SADDLE	SANDSTONE	WHITE	



SS4500Z

## Independent Trading Co. Full Zip Hooded Sweatshirt—SS4500Z

80% cotton/20% polyester, 20 single, 8.5 ounce. 100% cotton face yarn. 1x1 rib cuffs and waistband, jersey lined hood, heavy gauge drawcord, metal eyelets, #5 metal kissing zipper, double-needle split stitched sewing on all seams. Front pouch pockets. Fashion fit.

Charcoal Heather & Classic Navy Heather - 55% cotton/45% polyester.

Grey Heather - 75% cotton/25% polyester.

ADULT: XS, S, M, L, XL, 2XL, 3XL.

ALPINE GREEN	ARMY HEATHER	BLACK	CHARCOAL
CHARCOAL HEATHER	CLASSIC NAVY HEATHER	GREY HEATHER	GUNMETAL HEATHER
MAROON	NAVY	ROYAL	SANDSTONE
WHITE			

SS4500



 **INDEPENDENT**  
TRADING COMPANY



SS650



SS3000



**Independent Trading Co. Junior's Lightweight Hoodie—SS650**

60% cotton/40% polyester, 6.5 ounce. 1x1 rib cuffs and waistband, unlined hood, flat drawcord with metal eyelets, matching twill neck tape, double-needle split stitched sewing on all seams. Front pouch pocket. Ladies fit.

Gunmetal Heather & White 75% cotton/25% polyester.

**JUNIOR:** S, M, L, XL, 2XL.

AQUAMARINE	BLACK	CHARCOAL HEATHER	GUNMETAL HEATHER
LIGHT BLACKBERRY	WHITE		

**Independent Trading Co. Midweight Crew Sweatshirt—SS3000**

80% cotton/20% polyester, 20 single, 8.5 ounce. 100% cotton face yarn. Split stitch double-needle sewing throughout. 1x1 ribbing at collar, cuffs and waistband. Twill neck tape. Fashion fit.

Charcoal Heather- 55% cotton/45% polyester, Grey Heather- 75% cotton/25% polyester.

**ADULT:** S, M, L, XL, 2XL, 3XL.

ARMY HEATHER	BLACK	CHARCOAL HEATHER	CLASSIC NAVY
CLASSIC NAVY HEATHER	GREY HEATHER	GUNMETAL HEATHER	MAROON
RED	ROYAL HEATHER	WHITE	





AFX4000



AFX4000Z



AFX COLLECTION

*Lightweight - Ultra Soft - Slim Fit*

**Independent Trading Company Pullover Hooded Sweatshirt—  
AFX4000**

80% cotton/20% polyester, 40 single, 6.5 ounce. 100% cotton face yarn. Split stitch double-needle sewing on all seams. Twill neck tape. Jersey lined hood, flat drawcord, nickel eyelets and 1x1 ribbing at waistband, cuffs and pocket openings. Fashion fit.

ADULT: XS, S, M, L, XL, 2XL.

**Independent Trading Company Fitted Full Zip Hooded Sweatshirt—  
AFX4000Z**

80% cotton/20% polyester, 40 single, 6.5 ounce. 100% cotton face yarn. Antique nickel kissing zipper. Flat drawcord with antique nickel eyelets. Split-stitch double-needle sewing on all seams. Jersey lined hood. Fashion fit.

ADULT: XS, S, M, L, XL, 2XL, 3XL.

BLACK	CHARCOAL	CHARCOAL HEATHER	GREY HEATHER	GUNMETAL HEATHER	NAVY	RED HEATHER	TURQUOISE HEATHER	WHITE
-------	----------	------------------	--------------	------------------	------	-------------	-------------------	-------





AFX90UN

**NEW! Independent Trading Co. Unisex Hoodie with White Drawcord—AFX90UN**

80% cotton/20% polyester, 40 single, 6.5 ounce. 100% cotton face yarn. Unlined hood. White round drawcord with plastic tip. Split stitch double-needle sewing on all seams. Fashion fit.

Charcoal Heather - 55% cotton/45% polyester.

Gunmetal Heather - 65% cotton/35% polyester.

UNISEX: XS, S, M, L, XL, 2XL.

ALPINE GREEN	BLACK	CHARCOAL HEATHER	CLASSIC NAVY	COBALT	CURRANT	FOREST CAMO	GUNMETAL HEATHER	RED
RUST	SANDSTONE	SLATE BLUE	TANGERINE	TURQUOISE				



AFX90UNZ

**Independent Trading Co. Unisex Full Zip Hood with White Drawcord—AFX90UNZ**

80% cotton/20% polyester, 40 single, 6.5 ounce. 100% cotton face yarn. Unlined hood. White round drawcord with plastic tip. #5 white coil kissing zipper with white tape. Split stitch double-needle sewing on all seams. Fashion fit.

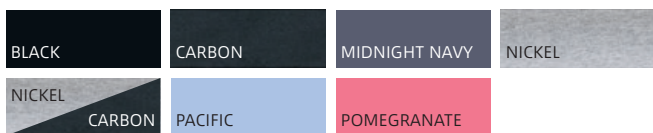
UNISEX: XS, S, M, L, XL, 2XL.



# Youth Collection

DURABLE - PREMIUM QUALITY - STANDARD FIT

**NEW!** Independent Trading Co. Toddlet Lightweight Special Blend Raglan Hooded Pullover—PRM10TSB  
52% cotton/48% polyester, 30 single, 6.5 ounce. Raglan sleeves. Unlined hood. Reverse coverstitch sewing. Twill neck tape. 1x1 ribbing at cuff, and waistband. Retail toddler fit.  
TODDLER: 2T, 4T, 5/6.



PRM10TSBZ



**NEW!** Independent Trading Co. Toddler Lightweight Special Blend Zip Hood—PRM10TSBZ  
52% cotton/48% polyester, 30 single, 6.5 ounce. Raglan sleeves. Unlined hood. Split stitch double needle sewing. Twill neck tape. #3 dtm coil kissing zipper with nickel pull. 1x1 ribbing at cuff, and waistband. Retail toddler fit.  
TODDLER: 2T, 4T, 5/6.



PRM10TSB



PRM15YSB



PRM15YSBZ



SS4001Y



**Independent Trading Co. Youth Special Blend Raglan Hood—PRM15YSB**

52% cotton/48% polyester, 30 single, 6.5 ounce. Raglan sleeves. Unlined hood. No drawcord. Reverse cover stitch sewing. 1x1 ribbing at cuffs and waistband. Front pouch pocket. Retail youth fit. **YOUTH:** XS, S, M, L, XL.

**Independent Trading Co. Youth Special Blend Raglan Hood—PRM15YSBZ**

52% cotton/48% polyester, 30 single, 6.5 ounce. Raglan sleeves. Unlined hood. Reverse coverstitch sewing. Twill neck tape. 1x1 ribbing at cuff, and waistband. Retail youth fit. **YOUTH:** XS(4/5), S(6/8), M(10/12), L(14/16), XL(18-20).

**Independent Trading Co Youth Hooded Sweatshirt—SS4001Y**

80% cotton/20% polyester, 20 single, 8.5 ounce. 100% cotton face yarn. 1x1 ribbing at cuffs and waistband, split stitch double-needle sewing on all seams. No drawcord. Twill neck tape. Jersey lined hood. Retail youth fit. Charcoal Heather - 55% cotton/45% polyester. Grey Heather - 75% cotton/25% polyester. **YOUTH:** S(8-10), M(10-12), L(12-14), XL(14-16).

BLACK	CARBON
MIDNIGHT NAVY	NICKEL
NICKEL	CARBON
POMEGRANATE	PACIFIC

BLACK	CARBON
MIDNIGHT NAVY	NICKEL
NICKEL	CARBON
POMEGRANATE	PACIFIC

BLACK	CHARCOAL HEATHER
CLASSIC NAVY	GREY HEATHER
RED	ROYAL HEATHER



# Get Your Game On

## PERFORMANCE APPAREL FROM A4

### A4 Ladies Cooling Performance Crew—NW3201

100% polyester interlock, 4.0 ounce fabric.

Moisture wicking, odor resistant and stain release properties. Ultra tight knit resists snagging. Conservative fit.

ADULT: XS, M, L, XL, 2XL.

BLACK	GRAPHITE	ROYAL
-------	----------	-------

SILVER	WHITE
--------	-------

### A4 Cooling Performance Crew—N3142

100% polyester interlock, 4.0 ounce fabric.

Moisture wicking, odor resistant and stain release properties. Ultra tight knit resists snagging. Ladies fit.

ADULT: S, M, L, XL, 2XL, 3XL, 4XL.

BLACK	CARDINAL	GOLD
-------	----------	------

GRAPHITE	KELLY	LIGHT BLUE
----------	-------	------------

LIME	NAVY	PURPLE
------	------	--------

ROYAL	SCARLET	SILVER
-------	---------	--------

WHITE
-------

### A4 Youth Cooling Performance Crew—NB3142

100% polyester interlock, 4.0 ounce fabric.

Moisture wicking, odor resistant and stain release properties. Ultra tight knit resists snagging. Youth fit.

YOUTH: S, M, L, XL.

BLACK	GRAPHITE	ROYAL
-------	----------	-------

SILVER	WHITE
--------	-------

### A4 Adult Lined Tricot Mesh Short 9"—N5296

100% Polyester eyelet mesh, 2.5 ounce fabric.

Liner is 100% polyester tricot fabric, 2.5 ounce fabric. Moisture wicking, odor resistant and stain release properties. 1½ covered elastic waistband with an inside draw cord. Conservative fit.

ADULT: S, M, L, XL, 2XL, 3XL.

BLACK	NAVY	ROYAL
-------	------	-------

# A4



NB3142



N5296





2000



2000L



2000B

## Over 60 colors to choose from!

### GILDAN® ACTIVEWEAR

#### Gildan® Ultra Cotton® Adult T-Shirt—2000

Pre-shrunk 100% cotton, jersey knit 6.0 ounce t-shirt. Taped neck and shoulders. Double-needle sleeve and bottom hems. Seamless double-needle collar. Quarter-turned to eliminate center crease.

Ash Grey contains 99% cotton/1% polyester, Sport Grey and Antique Colors contain 90% cotton/10% polyester. All other Heather colors and all Safety colors contain 50% cotton/50% polyester. Safety Green and Safety Orange conform to ANSI/ISEA 107-2010 High Visibility Standards.

ADULT: S, M, L, XL, 2XL, 3XL, 4XL, 5XL.

#### Gildan® Ultra Cotton® Classic Fit Ladies T-Shirt—2000L

Pre-shrunk 100% cotton, jersey knit 6.0 ounce fabric. Tailored sleeve for a better ladies fit.

LADIES: S, M, L, XL, 2XL.

#### Gildan® Ultra Cotton® Youth T-Shirt—2000B

Pre-shrunk 100% cotton jersey knit 6.0 ounce youth t-shirt. Seamless double-needle collar. Taped neck and shoulders. Double-needle sleeve and bottom hems. Quarter-turned to eliminate center crease. CPSIA tracking label compliant.

Ash Grey contains 99% cotton/1% polyester, Sport Grey contains 90% cotton/10% polyester. Safety colors are 50% cotton/50% polyester. Safety Green and Safety Orange conform to ANSI/ISEA 107-2010 High Visibility Standards.

YOUTH: XS(2/4), S(6/8), M(10/12), L(14/16), XL(18/20).

#### Gildan® Ultra Cotton® Pocket T-shirt—2300

Pre-shrunk 100% cotton, 6.0 ounce jersey knit pocket t-shirt. Double-needle five-point pocket on left chest. Double-needle stitched neck, sleeve and bottom hems. Quarter-turned to eliminate center crease. Taped neck and shoulders. Seamless collar.

Ash Grey contains 99% cotton/1% polyester, Sport Grey contains 90% cotton/10% polyester.

ADULT: S, M, L, XL, 2XL, 3XL.

#### Gildan® Ultra Cotton® Adult Long Sleeve T-Shirt—2400

Pre-shrunk 100% cotton jersey knit 6.0 ounce long sleeve t-shirt. Double-needle bottom hem. Ribbed cuffs. Quarter-turned to eliminate center crease. Taped neck and shoulders.

Ash Grey contains 99% cotton/1% polyester, Sport Grey contains 90% cotton/10% polyester.

ADULT: S, M, L, XL, 2XL, 3XL<sup>3</sup>, 4XL, 5XL<sup>5</sup>.

**GILDAN®**





2300



2400

ULTRA COTTON®  
*America's Favorite Basic Tee*

ANTIQUE CHERRY RED	ANTIQUE IRISH GREEN	ANTIQUE ROYAL	ASH GREY	AZALEA	BLACK	BLUE DUSK	CARDINAL RED	CAROLINA BLUE
CHARCOAL	CHERRY RED	CHESTNUT	CORNSILK	DAISY	DARK CHOCOLATE	DARK HEATHER	FOREST GREEN	GALAPAGOS BLUE
GOLD	HEATHER CARDINAL	HEATHER INDIGO	HEATHER NAVY	HEATHER SAPPHIRE	HELICONIA	ICE GREY	INDIGO BLUE	IRIS
IRISH GREEN	JADE DOME	KELLY GREEN	KIWI	LIGHT BLUE	LIGHT PINK	LIME	MAROON	METRO BLUE
MILITARY GREEN	MINT GREEN	NATURAL	NAVY	OLIVE	ORANGE	ORCHID	PISTACHIO	PRAIRIE DUST
PURPLE	RED	ROYAL	SAFETY GREEN	SAFETY ORANGE	SAFETY PINK	SAND	SAPPHIRE	SKY
SPORT GREY	STONE BLUE	TAN	TANGERINE	TEXAS ORANGE	VEGAS GOLD	WHITE		





## *Heavy Cotton™*

### EYE-CATCHING FABRICS FROM GILDAN®

#### **Gildan® Heavy Cotton™ Adult T-Shirt—5000**

Pre-shrunk 100% cotton jersey knit 5.3 ounce t-shirt. Double-needle stitched sleeve and bottom hems. Quarter-turned to eliminate center crease. Seamless double-needle collar.

Ash Grey contains 99% cotton/1% polyester, Sport Grey and Antique colors contain 90% cotton/10% polyester. Blackberry, Dark Heather, Lilac, Midnight, Russet, Sunset, Tweed, Neon colors, Heather colors and Safety colors are 50% cotton/50% polyester. Safety Green and Safety Orange conform to ANSI/SEA 107-2010 High Visibility Standards.

**ADULT:** S, M, L, XL, 2XL, 3XL.

#### **Gildan® Heavy Cotton™ Adult Long Sleeve T-Shirt—5400**

Pre-shrunk 100% cotton jersey knit 5.3 ounce long sleeve t-shirt. Seamless double-needle collar. Double-needle bottom hem. Ribbed cuffs. Taped neck and shoulders. Quarter-turned to eliminate center crease.

Ash Grey contains 99% cotton/1% polyester, Sport Grey contains 90% cotton/10% polyester.

**ADULT:** S, M, L, XL, 2XL, 3XL.

#### **Gildan® Heavy Cotton™ Youth T-Shirt—5000B**

Pre-shrunk 100% cotton jersey knit 5.3 ounce youth t-shirt. Taped neck and shoulders. Double-needle stitched sleeve and bottom hems. Seamless double-needle collar. Quarter-turned to eliminate center crease. CPSIA tracking label compliant.

**YOUTH:** XS(2/4), S(6/8), M(10/12), L(14/16), XL(18/20).



# DryBlend®

BLEND S ARE ALWAYS ON TREND

## Gildan® DryBlend® Adult 50/50 T-Shirt—8000

50% cotton/50% polyester pre-shrunk jersey knit 5.5 ounce t-shirt. Seamless double-needle collar. Taped neck and shoulders. Heat transfer label. Quarter-turned body to eliminate center crease. Double-needle stitched sleeve and bottom hems. Moisture wicking properties.

ADULT: S, M, L, XL, 2XL, 3XL, 4XL, 5XL.

## Gildan® DryBlend® Youth T-Shirt—8000B

50% cotton/50% polyester pre-shrunk jersey knit 5.6 ounce youth t-shirt. Seamless double-needle collar. Taped neck and shoulders. Heat transfer label. Quarter-turned body to eliminate center crease. Double-needle stitched sleeve and bottom hems. Moisture wicking properties. CPSIA tracking label compliant.

YOUTH: XS(2/4), S(6/8), M(10/12), L(14/16).

ANTIQUE CHERRY RED	ANTIQUE IRISH GREEN	ANTIQUE ORANGE	ANTIQUE SAPPHIRE
ASH GREY	AZALEA	BLACK	BLACKBERRY
BROWN SAVANA	CARDINAL RED	CAROLINA BLUE	CHARCOAL
DAISY	DARK CHOCOLATE	DARK HEATHER	ELECTRIC GREEN
FOREST GREEN	GARNET	GOLD	GRAVEL
HEATHER MILITARY GREEN	HEATHER RED	HEATHER SAPPHIRE	HELICONIA
ICE GREY	INDIGO BLUE	IRISH GREEN	JADE DOME
KELLY GREEN	KIWI	LIGHT BLUE	LIGHT PINK
LILAC	LIME	MAROON	MIDNIGHT
MILITARY GREEN	MINT GREEN	NAVY	NATURAL
OLD GOLD	ORANGE	PURPLE	RED
ROYAL	SAFETY GREEN	SAFETY ORANGE	SAFETY PINK
SAND	SAPPHIRE	SKY	SPORT GREY
SUNSET	TEXAS ORANGE	TROPICAL BLUE	TWEED
VIOLET	YELLOW HAZE	WHITE	

GILDAN®







18500



18500B



18600



18600B

## Cozy Up!

### HEAVY BLEND® FLEECE

#### Gildan® Heavy Blend™ Hooded Sweatshirt—18500

50% cotton/50% polyester preshrunk 8.0 ounce fleece set-in sleeve hooded sweatshirt. Double-lined hood with matching drawcord. Double-needle stitching. Pouch pocket. Double-needle cuffs. Spandex blend 1x1 ribbed cuffs. Quarter-turned to eliminate center crease. Safety Green and Safety Orange conform to ANSI/SEA 107-210 High Visibility Standards.

ADULT: S, M, L, XL, 2XL, 3XL, 4XL, 5XL<sup>5</sup>.

#### Gildan® Heavy Blend™ Youth Hooded Sweatshirt—18500B

50% cotton/50% polyester pre-shrunk 8.0 ounce set-in sleeve hooded sweatshirt. Air jet yarn provides softer feel and reduced pilling. Double-lined hood. Double-needle stitching. Pouch pocket. Double-needle cuffs. Spandex blend 1x1 rib. Quarter-turned to eliminate center crease. CPSIA Tracking Label Compliant.

YOUTH: S(6/8), M(10/12), L(14/16), XL(18/20).

#### Gildan® Heavy Blend™ Full Zip Hooded Sweatshirt—18600

50% cotton/50% polyester preshrunk 8.0 ounce fabric. Air jet yarn provides softer feel and reduced pilling. Unlined hood. Double-needle stitching throughout. Full length front YKK metal zipper. Overlapped fabric across zipper allows for full front printing. Matching drawcord. Pouch pockets. 1x1 rib with spandex. Quarter-turned to eliminate center crease.

ADULT: S, M, L, XL, 2XL, 3XL.

#### Gildan® Heavy Blend™ Full Zip Hooded Sweatshirt—18600B

50% cotton/50% polyester 8 ounce pre-shrunk set-in sleeve youth full zip hooded sweatshirt. Pouch pockets. Double-needle stitching throughout. 1x1 rib with spandex. Air jet yarn for extra soft feel and reduced pilling. CPSIA tracking label compliant.

YOUTH: S(6/8), M(10/12), L(14/16), XL(18/20).

**GILDAN®**





18000

**Gildan® Heavy Blend™ Crewneck Sweatshirt—18000**

50% cotton/50% polyester preshrunk 8.0 ounce set-in sleeve sweatshirt. Air jet yarn provides softer feel and reduced pilling. Double-needle stitching. Double-needle cuffs. Spandex blend 1x1 rib. Quarter-turned to eliminate center crease.

ADULT: S, M, L, XL, 2XL, 3XL.



18200

**Gildan® Heavy Blend™ Sweatpant—18200**

50% cotton/50% polyester preshrunk 8.0 ounce sweatpant. Air jet yarn provides softer feel and reduced pilling. No pockets. Covered elastic waistband with drawcord. Elastic cuffs. Double-needle bottom hems.

ADULT: S, M, L, XL, 2XL.



18200B

**Gildan® Heavy Blend™ Youth Sweatpants—18200B**

50% cotton/50% polyester, preshrunk 8.0 ounce fabric. Air jet yarn provides softer feel and reduced pilling. No pockets. Covered elastic waistband, elastic cuffs. Double-needle bottom hems. CPSIA Tracking Label Compliant.

YOUTH: S(6/8), M(10/12), L(14/16), XL(18/20).

ANTIQUE SAPPHIRE	ASH GREY	BLACK	CAROLINA BLUE	CHARCOAL	CHERRY RED	DARK CHOCOLATE	DARK HEATHER	FOREST GREEN
GOLD	HELICONIA	INDIGO BLUE	IRISH GREEN	LIGHT BLUE	LIGHT PINK	MAROON	MILITARY GREEN	NAVY
ORANGE	PURPLE	RED	ROYAL	SAFETY GREEN	SAFETY ORANGE	SAND	SPORT GREY	VIOLET
WHITE								





EFFORTLESS COOL FROM ANVIL®

*A new go-to tee you'll wear over and over again*

**anvil® Youth Lightweight Tee—990B**

100% ring-spun cotton; pre-shrunk, 4.5 ounce, 30 singles fabric. Tubular construction. Shoulder-to-shoulder tape and seamed collar. Double-needle sleeve and bottom hem. TearAway label. Oeko-Tex® Standard 100 certified. Classic fit.

**YOUTH:** XS, S, M, L, XL.

**anvil® Adult Lightweight Tee—980**

100% ring-spun cotton; pre-shrunk, 30 single, 4.5 ounce. Semi-fitted. Tubular construction. Shoulder-to-shoulder tape and seamed collar. Double-needle sleeve and bottom hem. TearAway label. Oeko-Tex® Standard 100 certified. Fashion fit.

**ADULT:** S, M, L, XL, 2XL, 3XL.

HEATHER GREY	BLACK	CARIBBEAN BLUE	CHARCOAL	CITY GREEN	GREEN APPLE	HEATHER BLUE	HEATHER DARK GREY	HEATHER GREEN
HEATHER PURPLE	HEATHER ROYAL	INDEPENDENCE RED	KELLY GREEN	KEY LIME	LAKE	LIGHT BLUE	MANDARIN ORANGE	NAVY
RED	ROYAL	SILVER	SMOKE	SPRING YELLOW	STORM GREY	WHITE		





# Lifestyle

## TRADITIONAL FIT MEETS CONTEMPORARY STYLE

### Richardson Trucker Snapback—112/112P

35% cotton/65% polyester. 100% polyester mesh back. Structured, mid-profile, six-panel. Pre-curved contrast stitch visor. Adjustable plastic snapback. \*112P, formally known as 114.

ONE SIZE FITS ALL



LODEN/BLACK



### NEW! Richardson Low Pro Trucker—115

47% cotton/28% nylon/25% polyester. Structured, low-profile, six-panel. Pre-curved visor. Adjustable plastic snapback.

ONE SIZE FITS ALL



HEATHER GREY/  
BIRCH/  
AMBER GOLD





# HIGH PROFILER

*The One and Only Original*

**FLEXFIT® One Ten Snapback—110F**  
83% acrylic/15% wool/2% spandex. Structured, high-profile, 3¾" crown. Six-panel. Flat bill. Pioneered adjustable FLEXFIT® tech. Matching plastic snap & undervisor.  
**ONE SIZE FITS ALL**



DARK GRAY



BLACK



BLACK/GRAY



BLACK/PURPLE



BLACK/RED



BLACK/TEAL



HEATHER GRAY



MAROON



NATURAL/BLACK



NAVY



RED



ROYAL



WHITE

**FLEXFIT**  
*The One & Only Original®*

**FLEXFIT® Fitted Flat Bill—6210FF**  
83% acrylic/15% wool/2% spandex. Structured, high-profile, 3¾" crown. Six-panel, matching undervisor. Flat visor. Sewn eyelets. Fitted.  
White and White/Black are 98% acrylic/2% spandex.  
**SIZES:** Small/Medium 6¾"-7¼", Large/X-Large 7¼"-7¾".



HEATHER GRAY



BLACK



BLACK/GRAY



BLACK/PURPLE



BLACK/RED



BLACK/ROYAL



BROWN



DARK NAVY



DARK GRAY



RED



RED/BLACK



ROYAL



WHITE



WHITE/BLACK



## LOW PROFILES

*Unparalleled quality*

## THE ULTIMATE DAD CAP

UNSTRUCTURED

LOW PROFILE

ADJUSTABLE

CURVED VISOR



DARK GRAY

### Yupoong Low-Profile Cotton Dad Cap—6245CM

100% cotton twill. Unstructured, extra low-profile. Six-panel. Matching undervisor. Sewn eyelets. Antique brass buckle closure. ONE SIZE FITS ALL



BLACK



GREEN CAMO



KHAKI



LIGHT BLUE



NAVY



LIGHT PINK



STONE



WHITE



### Yupoong Classic Jockey Cap—7005

100% cotton, low-profile, 2¾" crown. Flat bill. Five panel. Classic camper shape. Black slip closure. 4 black, metal eyelets. Soft buckram. Matching undervisor. ONE SIZE FITS ALL



GRAY



# The Classics

## CLASSIC LOOK, SUPERIOR QUALITY

**Yupoong Premium 5 Panel Snapback—5089M**  
80% acrylic/20% wool. Five panel, high-profile, 3¾" crown, structured. Matching plastic snap. Hard buckram. 8 rows of stitching on visor. Classic green undervisor.  
White is 100% Acrylic.  
**ONE SIZE FITS ALL**



ROYAL



BLACK



BLACK/RED



BLACK/SILVER



BLACK/TEAL



DARK GRAY



HEATHER GRAY



NAVY



RED



WHITE

**Yupoong Classic Flat Bill Snapback—6089M**  
80% acrylic/20% wool. Six panel, high-profile, 3¾" crown, structured. Matching plastic snap. Hard buckram. 8 rows of stitching on visor. Classic green undervisor.  
White is 100% Acrylic. Camo Color is 60% Cotton/40% Polyester.  
**ONE SIZE FITS ALL**



DARK HEATHER/  
BLACK



BLACK



BLACK/N.YLLW



BLACK/N.ORG



BLACK/N.PINK



BLACK/PURPLE



BLACK/RED



BLACK/SILVER



BLACK/TEAL



DARK HEATHER



DARK GRAY



DARK NAVY



DK HEATHER/RED



HEATHER GRAY



HEATHER/BLACK



HEATHER/NAVY



HEATHER/PURPLE



HEATHER/RED



HEATHER/ROYAL



MAROON



NATURAL



NATURAL/BLACK



NAVY



NAVY/RED



ORANGE



PURPLE



PURPLE/GOLD



RED



ROYAL



ROYAL/ORANGE



SPRUCE



SILVER



WHITE



GREEN CAMO



BLACK/CAMO



CAMO/BLACK

**Yupoong Cordouroy Snapback—6508**  
100% cotton premium cordouroy fabric. Lightly structured, high-profile, 3¾" crown, five panel. Mesh tray backing. Matching undervisor. Plastic snap.  
**ONE SIZE FITS ALL**



BLACK



GRAY



NAVY

**Yupoong Melton Wool Snapback—6689M**  
50% wool/30% acrylic/20% nylon. Structured, high-profile, 3½" crown, six-panel. Flat bill, green undervisor. Snapback closure.  
**ONE SIZE FITS ALL**



BLACK



DARK GRAY



NAVY



HEATHER GRAY



# Mother Trucker

## THE BEST-SELLING MESH TRUCKER CAPS

### Yupoong 5 Panel Classic Mesh Trucker—6006

47% cotton/25% polyester/28% nylon. Structured, high-profile, 4" crown, five-panel. Flat Visor. Matching undervisor. Snapback closure.

ONE SIZE FITS ALL



RED/BLACK



BLACK



BLACK/WHITE



BLK/WHT/BLK



CHARCOAL



KELLY/WHT/KELLY



NAVY/WHITE



NAVY/WHT/NAVY



RED



RED/WHT/RED



ROYAL/WHITE



ROY/WHT/ROY



SILVER/BLACK



WHITE

### Yupoong Foam Trucker with White Front—6005FW

60% cotton/40% polyester. High-profile, 3 3/4" crown. Thick, 6 mm sponge backing. Plastic snap matching with trucker mesh. Matching undervisor.

ONE SIZE FITS ALL



BLACK/WHITE/RED



BLK/WHT/BLK



NAVY/WHT/NAVY



RED/WHT/BLK



RED/WHT/RED



ROY/WHT/ROY

### Yupoong Retro Mesh Trucker—6606

47% cotton/25% polyester/28% nylon. Mid-profile, 3 1/2" crown. Structured, six-panel. Pre-curved visor. Trucker mesh back. Plastic tab closure.

ONE SIZE FITS ALL



MOSS/KHAKI



BLACK



BLACK/WHITE



BLK/WHT/BLK



BROWN/KHAKI



CHARCOAL



CHARCOAL/BLK



CHARCOAL/WHT



KHAKI



NAVY



NAVY/WHITE



NAVY/WHT/NAVY



RUSTIC ORG/KHAKI



PINK



RED



RED/BLACK



RED/WHITE



ROYAL/WHITE



WHITE

### FLEXFIT® Mesh Trucker—6511

55% polyester/43% cotton/2% spandex. Twill front, 100% polyester mesh back. Structured, mid-profile, 3 1/2" crown, six-panel. Silver undervisor. Permacurv® Visor. Sewn eyelets. Fitted.

ONE SIZE FITS ALL



WHITE/BLACK



BLACK



BLACK/WHITE



BROWN



BROWN/KHAKI



CHARCOAL



CHARCOAL/WHT



DARK NAVY



NAVY



WHITE/NAVY



NAVY/WHITE



PINK/WHITE



RED



RED/BLACK



RED/WHITE



ROYAL



WHITE



# The Original

IMITATORS ARE ALWAYS A STEP BEHIND

## FLEXFIT® V-Flex Cotton Twill—5001

98% cotton twill/2% spandex. Structured, mid-profile, 3½" crown. Six-panel. Silver undervisor. Permacurv® visor. Sewn eyelets. Fitted.

SIZES: Small/Medium 6¾"-7¼", Large/X-Large 7½"-7¾".



GRAY



BLACK



KHAKI



NAVY



RED



ROYAL



WHITE

## FLEXFIT® Cotton Blend—6277

63% polyester/34% cotton/3% spandex. Structured, mid-profile, 3½" crown. Six-panel. Silver undervisor. Permacurv® visor. Sewn eyelets. Fitted.

SIZES: Small/Medium 6¾"-7¼", Large/X-Large 7½"-7¾", XL/XXL 7¾"-8".



MAROON



BLACK



BROWN



DARK GRAY



DARK NAVY



GOLD



GRAY



KHAKI



NAVY



OLIVE GREEN



PURPLE



RED



ROYAL



SPRUCE



STONE



WHITE

## FLEXFIT® Wool Blend—6477

83% acrylic/15% wool/2% spandex. Structured, mid-profile, 3½" crown. Six-panel. Silver undervisor. Permacurv® visor. Sewn eyelets. Fitted.

White is 98% acrylic/2% spandex,

SIZES: Small/Medium 6¾"-7¼", Large/X-Large 7½"-7¾".



HEATHER GRAY



BLACK



BROWN



DARK NAVY



GRAY



KHAKI



MAROON



NAVY



RED



ROYAL



WHITE



**STAY COOL**  
Performance headwear

# THE ONE TEN TECH

STRUCTURED

WATER REPELLENT SHELL

ELASTIC LOOP & HOOK



**FLEXFIT® One Ten Cool & Dry Mini Pique—110P**  
100% polyester. Structured, mid-profile, 3½" crown. Six-panel. Permacurv® visor. Matching undervisor. Outer shell water repellent treatment. Inner shell moisture-wicking. Elasticized D-ring Velcro® closure.  
**ONE SIZE FITS ALL**



BLACK



NAVY



RED



SILVER



WHITE

**FLEXFIT**  
The One & Only Original®



**FLEXFIT® Cool & Dry Sport—6597**  
97% polyester/3% spandex. Structured, mid-profile, 3½" crown. Six-panel. Permacurv® visor. Matching undervisor. Moisture-wicking.  
**SIZES:** Small/Medium: 6¾" - 7¼" Large/X-Large: 7½" - 7¾"



BLACK



SPRUCE



GRAY



MAROON



NAVY



RED



ROYAL



WHITE



SILVER



## Knit Beanies

### COLD WEATHER HEADWEAR

#### Yupoong Beanie Knit Cap—1500KC

100% hypoallergenic acrylic. 8½" length. Super dense knit for easy embroidery. Hand washable.

ONE SIZE FITS ALL



BLACK



HEATHER GRAY



NAVY



DARK GRAY

#### Yupoong Cuffed Beanie Knit Cap—1501KC

100% hypoallergenic acrylic. 12" length. Super dense knit for easy embroidery. Hand washable.

ONE SIZE FITS ALL



BLACK



DARK GRAY



HEATHER GRAY



NAVY



ROYAL



KELLY GREEN



SPRUCE



WHITE



RED

#### Yupoong Ribbed Cuffed Knit Beanie—1545K

100% acrylic. 10" length. Loosely knit. Hand washable.

ONE SIZE FITS ALL



BLACK



DARK GRAY



NAVY



HEATHER GRAY





## "POM" UP YOUR HEADWEAR

*with* CIRQUE MOUNTAIN

Cirque Mountain Apparel Pom-Pom Beanies  
100% Acrylic. 11"x9"x1". Cuffed dense knit. Hand washable.  
ONE SIZE FITS ALL



NORDIC RED/WHITE/BLUE



NORDIC BLACK



NORDIC SEAFOAM



USA



BUFFALO PLAID



**A4**  
N3142 ..... 67  
N5296 ..... 67  
NB3142 ..... 67  
NW3201 ..... 67

**ANVIL**  
980 ..... 74  
990B ..... 74

**BELLA+CANVAS**  
100B ..... 48  
134B ..... 48  
3001 ..... 33  
3001B ..... 48  
3001T ..... 49  
3001Y ..... 49  
3006 ..... 34  
3021 ..... 34  
3200 ..... 36  
3200T ..... 49  
3413 ..... 38  
3413T ..... 49  
3480 ..... 36  
3501 ..... 37  
3650 ..... 45  
3739 ..... 46  
3901 ..... 46  
3909 ..... 47  
3939 ..... 46  
6004 ..... 33  
6400 ..... 35  
6405 ..... 35  
7501 ..... 47  
8413 ..... 38  
8800 ..... 40  
8802 ..... 40  
8803 ..... 39  
8804 ..... 39  
8809 ..... 41  
8816 ..... 42  
8838 ..... 42  
8850 ..... 43  
8852 ..... 44  
8855 ..... 44

**BURNSIDE APPAREL**  
5210 ..... 50  
5222 ..... 51  
8200 ..... 51  
8202 ..... 51  
8210 ..... 50

**CIRQUE MOUNTAIN APPAREL**  
10001 ..... 83  
100012 ..... 83

10003 ..... 83  
10005 ..... 83  
10008 ..... 83

**FLEXFIT**  
110F ..... 76  
110P ..... 81  
1500KC ..... 56  
5001 ..... 80  
6210FF ..... 76  
6277 ..... 80  
6477 ..... 80  
6511 ..... 79  
6597 ..... 81

**GILDAN**  
2000 ..... 68  
2000B ..... 68  
2000L ..... 68  
2300 ..... 69  
2400 ..... 69  
5000 ..... 70  
5000B ..... 70  
5400 ..... 70  
8000 ..... 71  
8000B ..... 71  
18000 ..... 73  
18200 ..... 73  
18200B ..... 73  
18500 ..... 72  
18500B ..... 72  
18600 ..... 72  
18600B ..... 72

**INDEPENDENT TRADING CO.**  
AFX4000 ..... 63  
AFX4000Z ..... 63  
AFX90UN ..... 64  
AFX90UNZ ..... 64  
EXP444PP ..... 59  
EXP54LWZ ..... 60  
EXP80PTZ ..... 59  
EXP90SHZ ..... 59  
EXP94NAW ..... 60  
IND4000 ..... 58  
IND4000Z ..... 58  
IND40RP ..... 57  
INDBKTSB ..... 55  
PRM10TSB ..... 65  
PRM10TSBZ ..... 65  
PRM15YSB ..... 66  
PRM15YSBZ ..... 66  
PRM22BP ..... 53  
PRM22BZ ..... 53  
PRM30SBC ..... 54

PRM33SBP ..... 54  
PRM33SBZ ..... 54  
PRM4500 ..... 52  
PRM655BZ ..... 53  
PRM65DRS ..... 55  
PRM90HT ..... 56  
PRM90HTZ ..... 56  
SS3000 ..... 62  
SS4001Y ..... 66  
SS4500 ..... 61  
SS4500Z ..... 61  
SS650 ..... 62

**NEXT LEVEL APPAREL**  
1510 ..... 14  
1533 ..... 15  
1534 ..... 15  
1540 ..... 14  
1560 ..... 14  
2021 ..... 19  
2050 ..... 19  
3110 ..... 26  
3200 ..... 8  
3300L ..... 7  
3310 ..... 26  
3312 ..... 27  
3352 ..... 27  
3400L ..... 8  
3533 ..... 10  
3600 ..... 7  
3600A ..... 13  
3601 ..... 12  
3602 ..... 12  
3604 ..... 9  
3605 ..... 8  
3650 ..... 9  
3633 ..... 10  
3710 ..... 26  
3712 ..... 27  
3900 ..... 7  
3900A ..... 13  
3904 ..... 9  
4210 ..... 6  
4600 ..... 6  
5013 ..... 4  
5030 ..... 5  
5033 ..... 4  
5040 ..... 5  
6010 ..... 20  
6010A ..... 13  
6021 ..... 22  
6051 ..... 23  
6071 ..... 22  
6072 ..... 22  
6200 ..... 5  
6210 ..... 16

6233 ..... 17  
6240 ..... 16  
6310 ..... 27  
6333 ..... 17  
6338 ..... 11  
6360 ..... 17  
6410 ..... 18  
6411 ..... 18  
6491 ..... 18  
6610 ..... 16  
6633 ..... 11  
6640 ..... 16  
6710 ..... 20  
6730 ..... 21  
6731 ..... 22  
6733 ..... 21  
6734 ..... 21  
6740 ..... 20  
6760 ..... 21  
6933 ..... 17  
7401 ..... 24  
7410 ..... 24  
7415 ..... 24  
7433 ..... 24  
7451 ..... 24  
8201 ..... 25  
8221 ..... 25  
9000 ..... 28  
9001 ..... 31  
9103 ..... 31  
9300 ..... 29  
9301 ..... 28  
9303 ..... 31  
9600 ..... 30  
9601 ..... 28  
9602 ..... 31  
9700 ..... 29  
9800 ..... 30  
9801 ..... 30

**RICHARDSON**  
112/112P ..... 75  
115 ..... 75

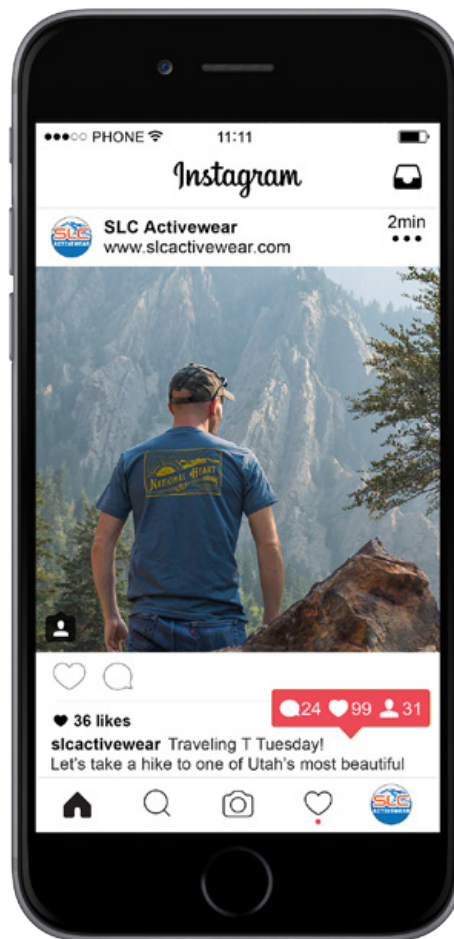
**YUPOONG**  
1500KC ..... 82  
1501KC ..... 82  
1545K ..... 82  
5089M ..... 78  
6005FW ..... 79  
6006 ..... 79  
6089M ..... 78  
6245CM ..... 77  
6508 ..... 78  
6606 ..... 79  
6689M ..... 78  
7005 ..... 77



SHARE *the* LOVE

# LET'S GET SOCIAL

FOLLOW US ON FACEBOOK, INSTAGRAM, AND PINTEREST.



SEE THE HOTTEST TRENDS IN IMPRINTABLES. FIND OUT ABOUT SPECIAL OFFERS AND EVENTS.  
STAY UP-TO-DATE WITH THE MOST POPULAR STYLES, FABRICS AND FASHION-FORWARD COLORS FROM  
THE MOST SOUGHT-AFTER BRANDS. TAG YOUR PHOTOS TO SHARE YOUR COOL CREATIONS.

STAY IN TOUCH. BE INSPIRED.



@SLCACTIVEWEAR #SLCACTIVEWEAR



[www.slccactivewear.com](http://www.slccactivewear.com)  
888.557.0799  
2341 S. Decker Lake Blvd.,  
West Valley City, UT 84119  
[sales@slccactivewear.com](mailto:sales@slccactivewear.com)

