

2018 CATALOG



BURNSIDE®

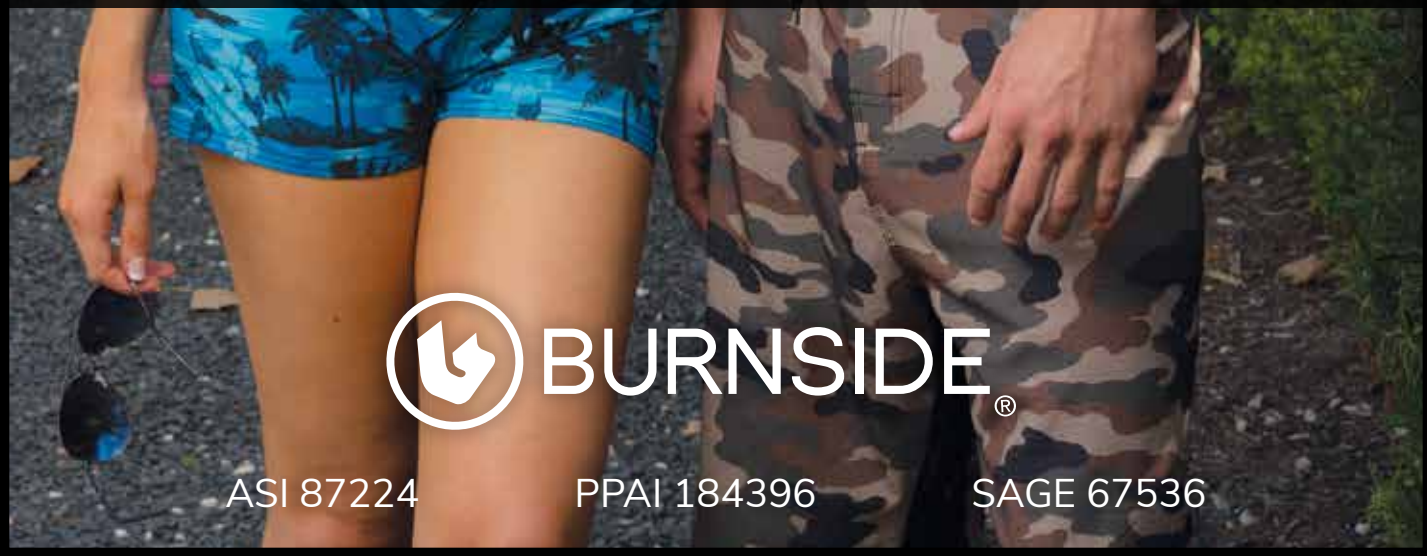


WHO IS BURNSIDE®

Burnside® is a lifestyle clothing brand with roots dating back to the mid 90's when action sports was on the rise. For over 20 years Burnside® has provided fashion and lifestyle clothing at a great value to its customers through numerous retailers throughout the country. Recently Burnside® has evolved and focused its assortment to offer the promotional and retail industry a vital tool in reaching customers with a desire to represent the style of the modern generation. Burnside® provides quality products that appeal to almost anyone's lifestyle in some way.

HOW TO PURCHASE

Burnside® is available exclusively through a select group of apparel wholesalers. Please contact them or e-mail us at askus@burnsideapparel.com for purchasing information. A list of all of our wholesalers contact info can be found at: www.burnsideapparel.com, under the "Wholesalers" tab.



ASI 87224

PPAI 184396

SAGE 67536

CONTENTS

Flannels	4-7
Wovens	8-14
Swim and Tanks	15-22
Shorts	23-24
Jogger Pants	25
Fleece & Outerwear	26-35

PG.7
Snap Flannel



NEW STYLES AND COLORS



PG.17
Rash
Guards



PG.23
Hybrid Stretch Shorts



PG.30
Performance Hoodies
& Jogger Pants



PLAID FLANNELS

**NEW
COLORS**



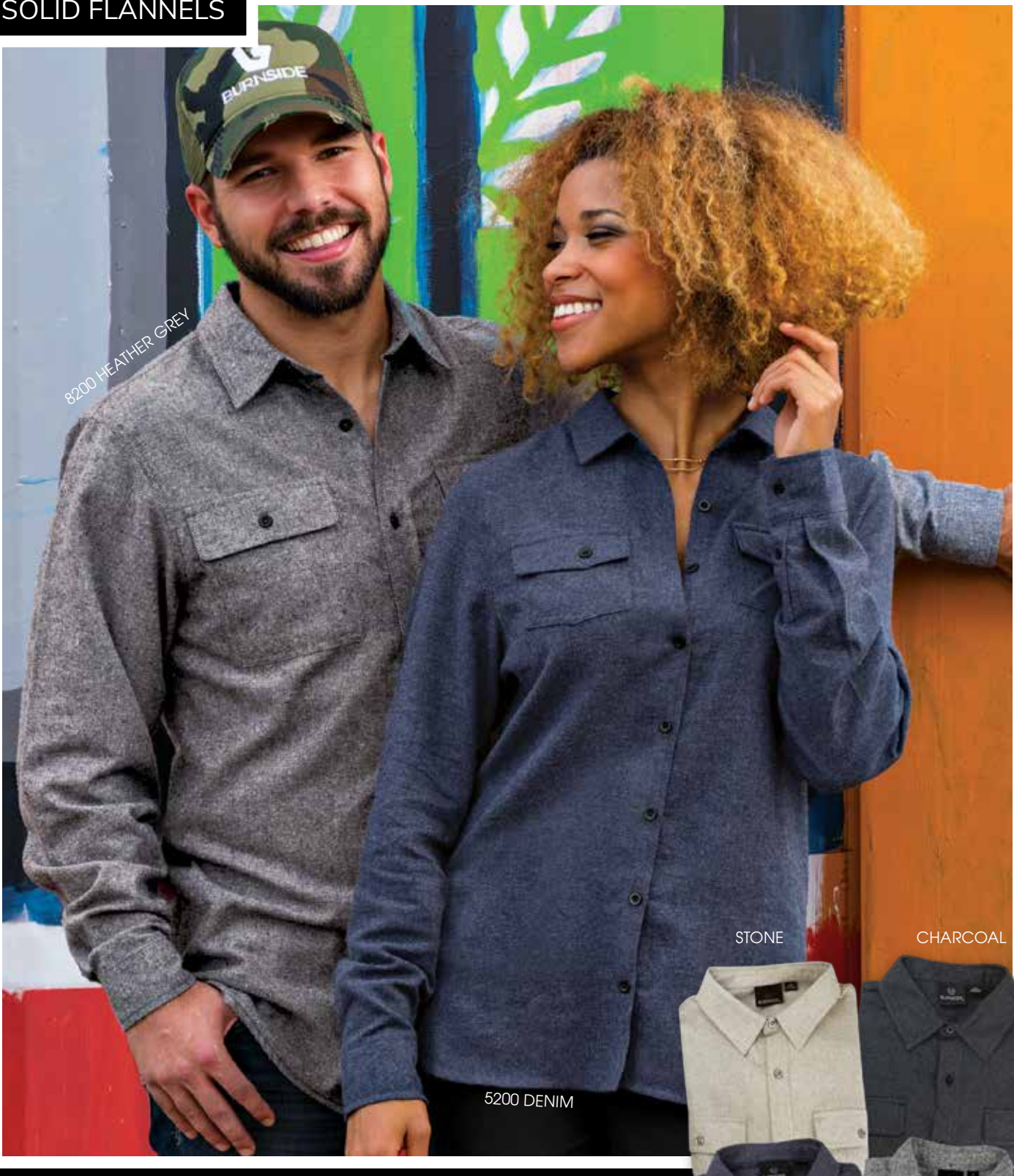
8210 MENS
5210 LADIES

- + 5.4 oz. 80/20 cotton/poly
- + 2 chest pockets
- + Button pocket flaps
- + Half back yoke
- + Hem bottom

- + Button cuffs
- + Ladies: Elongated drop tail
- + Mens: Roll up sleeves with placket
- + Modern fit
- + Sizes: S-3XL

**6 NEW
COLORS
IN 2018!**

SOLID FLANNELS



8200 HEATHER GREY

STONE

CHARCOAL

5200 DENIM



DENIM

HEATHER GREY

8200 MENS
5200 LADIES

- + 5.4 oz. 80/20 cotton/poly
- + 2 chest pockets with button flaps
- + Button cuffs
- + Hem bottom
- + Half moon back yoke
- + Ladies: Elongated tail
- + Mens: Locker loop
- + Modern fit
- + Sizes: S-3XL

NEW SNAP FLANNELS



NEW
STYLE

8219 INDIGO

INSIDE POCKET



INDIGO

BLACK

LIGHT GREY

8219 MENS

- + 5.4 oz. 80/20 cotton/poly
- + 2 chest pockets with snaps
- + Dyed to match snaps
- + Inside chest pocket
- + Snap cuffs
- + Half back yoke
- + Modern fit
- + Sizes: S-3XL

PLAID WOVELNS



9202 GREY/YELLOW

5222 RED

8202 RED/BLACK

MENS
9202 SHORT SLEEVE
8202 LONG SLEEVE

5222 LADIES

- + 3.0 oz. 55/45 cotton/polyester
- + 2 chest pockets, button flaps
- + 2 piece back yoke
- + Pearlized buttons
- + Modern fit
- + 8202: Adjustable button cuffs
- + 5222: Roll up sleeve placket
- + Mens Sizes: S-4XL
- + Ladies Sizes: S-3XL

9202 COLORS: ALL COLORS

- 8202 COLORS:**
- + Red
 - + White/Black
 - + Navy
 - + Red/Black
 - + Black/Grey

- 5222 COLORS:**
- + Red
 - + White/Black
 - + Navy
 - + Black/Grey
 - + Red/Black

WHITE/
BLACK

BLACK/
WHITE

RED

RED/
BLACK

NAVY

BLUE

BLUE/
BLACK

BLACK/
GREY

GREY/
YELLOW



WESTERNS PLAIDS



MENS
9206 SHORT SLEEVE
8206 LONG SLEEVE
5206 LADIES

- + 3oz. 55%/45% cotton/poly
- + Pearlized snap front
- + 2 chest pockets, snap flaps
- + Western stitching on chest
- + Hem sleeves and bottom
- + 2 piece back yoke
- + 8206: Button cuffs
- + 5206: Adjustable cuffs & roll up button sleeves
- + Modern fit
- + Colors: Red, black
- + Sizes: S-3XL

TEXTURE WOVENS



BLUE BLACK RED

- + 3.3 oz. 65/35 cotton/polyester
- + 2 chest pockets, button flaps
- + Front stitching and on yoke
- + Blue & red have black inner collar
- + Hem sleeves and bottom
- + Ladies has roll up sleeve placket
- + Modern fit
- + Sizes: S-3XL

9247 MENS
5247 LADIES

BUFFALO PLAID



9203 BLACK/BLUE

9203 | MENS

- + 2.8 oz. 55/45 cotton/polyester
- + 2 chest pockets with button flaps
- + Hem sleeves
- + Chain stitched bottom hem
- + Modern fit
- + Sizes: S-3XL

BLACK/BLUE, GREY/WHITE, RED/BLACK, BLACK/WHITE

CHAMBRAYS



LIGHT DENIM

DARK DENIM

8255 DARK DENIM

9255 LIGHT DENIM

5255 DARK DENIM

	MENS	LADIES
MENS	<ul style="list-style-type: none">+ 4.0 oz. 80/20 cotton/poly+ 2 chest pockets, button flaps+ 2-piece western back yoke+ Inverted back pleat+ 8255: Button cuffs+ Modern fit+ Colors: light denim, dark denim+ Sizes: S-3XL	<ul style="list-style-type: none">+ 4.0 oz. 80/20 cotton/poly+ 2 chest pockets, button flaps+ Western half back yoke+ Button cuffs+ Roll up sleeve placket+ Tapered ladies fit+ Colors: light denim, dark denim+ Sizes: S-3XL
LADIES		



9259

9259 BLACK

9259 SHORT SLEEVE
8259 LONG SLEEVE

STRETCH STRIPE

- + 3.8 oz. 97/3 cotton/spandex
- + Stretch fabric
- + Left chest pocket
- + Button down collar
- + Two-piece back yoke
- + Red stitching on sweep
- + 8259 has adjustable cuff
- + Modern fit
- + Sizes: S-3XL
- + Colors: black, navy



9265

9265 BLUE

9265 SHORT SLEEVE

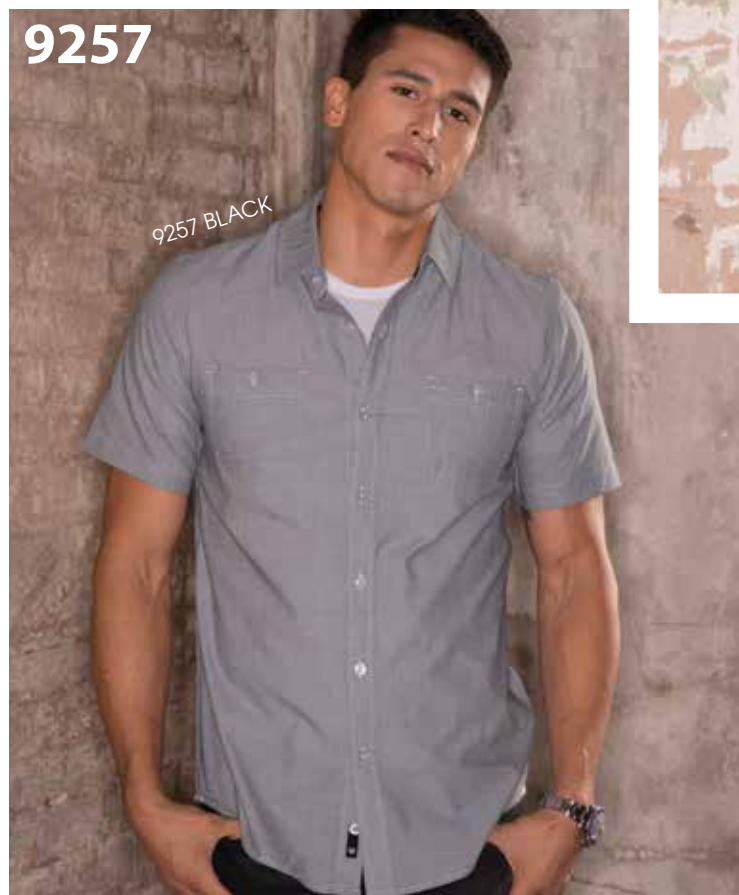
DOBBY STRIPED

- + 3.3 oz. 55/45 cotton/poly
- + Clear buttons
- + 2 chest pockets with button flaps
- + Two-piece back yoke
- + Modern fit
- + Sizes: S-3XL
- + Colors: black, blue

9257 SHORT SLEEVE
8257 LONG SLEEVE

MINI CHECKS

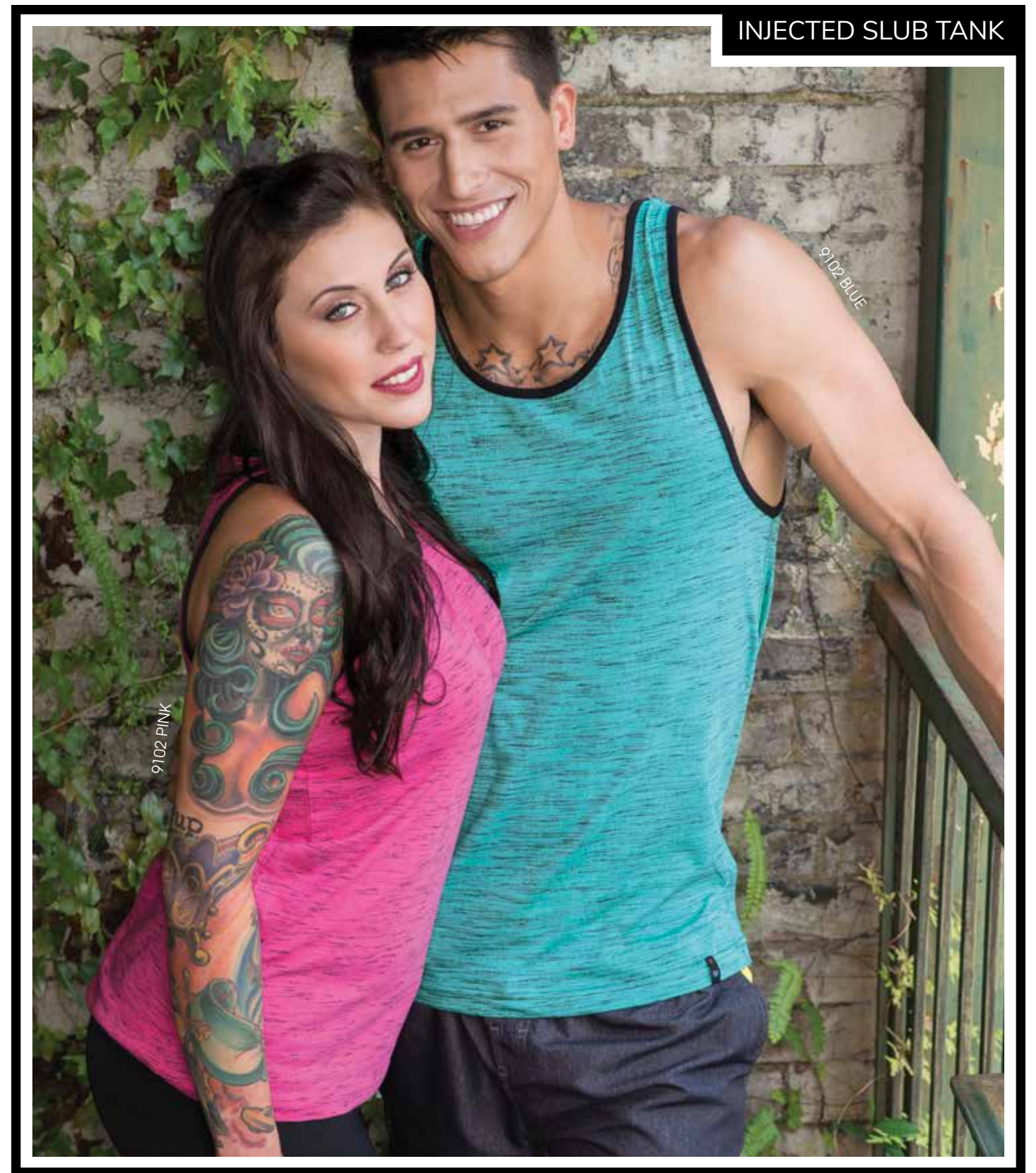
- + 3.7 oz. 55/45 cotton/poly
- + 2 chest pockets with button closure
- + Two-piece back yoke
- + Inverted back pleat
- + Twill taped side vents
- + Long sleeve has 2 button cuff
- + Modern fit
- + Sizes: S-3XL
- + Colors: navy, black



9257

9257 BLACK

FASHION WOVENS



INJECTED SLUB TANK

9102 PINK

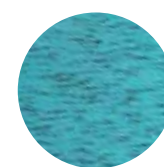
9102 BLUE



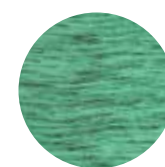
PINK



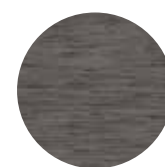
YELLOW



BLUE



GREEN



CHARCOAL

- + 5.2 oz. 85/15 cotton/poly
- + Black piped neck and armhole
- + Hem bottom
- + Unisex styling
- + Modern fit
- + Sizes: S-3XL

9102 UNISEX

HEATHER TANK



9111

SHORT SLEEVE

- + 5.1 oz. 65/35 cotton/polyester
- + Black piped neck and armhole
- + Railroad stitched bottom hem
- + Unisex styling
- + Modern fit
- + Sizes: S-3XL



HEATHER CHARCOAL



HEATHER RED



HEATHER NAVY



HEATHER GREEN

RASH GUARDS

9150	MENS	+ 6.2 oz. 92/8 poly/spandex	
5150	LADIES	+ Raglan sleeves	
4150	YOUTH	+ Crew neck	
8151	MENS LONG SLEEVE	+ UPF 30+ sun protection	
NEW STYLE		+ Helps prevent contact rash	

+ Mens Sizes: S-3XL
+ Lady Sizes: S-3XL
+ Youth Sizes: S-XL



9150, 5150, 4150 BLACK, RED, WHITE, ROYAL	9150 CONTRAST -NEW NAVY/WHITE, WHITE/BLACK, ROYAL/STEEL, STEEL/BLACK	8151-NEW WHITE, BLACK, ROYAL/WHITE, BLACK/STEEL
---	--	---



NEW STYLE AND COLORS





STRETCH BOARD SHORTS

9371 AVAILABLE IN:

BLACK, RED, GREEN CAMO, BLACK CAMO, FLORAL, PALM



5371 AVAILABLE IN:

BLACK, RED, PALM



5371 BACK POCKET



9371 CARGO POCKET



9371
5371

MENS
LADIES



- + 4.0 oz. 90/10 poly/spandex
- + Drawstring with spandex fly
- + Stretch fabric

9371 MENS

- + Inset patch pocket on right leg
- + Pattern styles have black inseam insert
- + Solids styles have no insert
- + Mens Sizes: 30, 32, 34, 36, 38, 40

5371 LADIES

- + Has no inseam insert
- + Back pocket
- + Ladies Sizes: XS, S, M, L, XL, 2XL

9371 FLORAL

5150 RED

5371 PALM

9371 BLACK CAMO

STRIPED SWIM TRUNKS



9401 MENS
4401 YOUTH

- + 3.2 oz. 100% polyester
- + Traditional swim short
- + Contrast drawstring
- + Contrast side stripe
- + Mesh lining
- + Cargo pocket with flap
- + Adult Sizes: S-2XL
- + Youth Sizes: S, M, L, XL

SOLID BOARDS



- + 4.0 oz. 100% polyester
- + Sateen back finish
- + Drawstring with spandex fly
- + Cargo pocket on right leg
- + Modern fit
- + Sizes: 30, 32, 34, 36, 38, 40

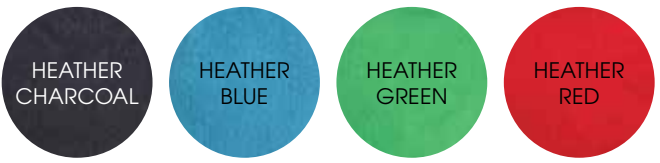
9301 MENS

HEATHERED BOARDS



9305 MENS

- + 4.0 oz. 100% polyester
- + Printed, sateen back finish
- + Black drawstring with spandex fly
- + Back pocket with flap
- + Modern fit
- + Sizes: 30, 32, 34, 36, 38, 40



FASHION SHORTS

9803 MENS

MICRO FIBER CARGO SHORT

- + 3.2 oz. 100% polyester
- + Dyed to match plastic button
- + Cargo pockets, contrast bellows
- + Zipper cargo pocket on left leg
- + Modern fit
- + Sizes: 30, 32, 34, 36, 38, 40



NEW 9820 MENS

HYBRID STRETCH SHORT

- + 90%/10% poly/spandex
- + Comfortable stretch fabric
- + UV protection against harmful rays
- + Salt and chlorine water fade resistance
- + Zipper front with button closure
- + 2 Side slash mesh pockets
- + Back left mesh welt pocket with zipper
- + Back right mesh pocket
- + Belt loops
- + Sizes: 30, 32, 34, 36, 38, 40



CHINO SHORTS



9860 MENS

- + 7.5 oz. 60/40 cotton/polyester
- + Dyed to match plastic button
- + 2 back pockets with buttons
- + Media pocket on back right
- + Modern fit
- + Sizes: 30, 32, 34, 36, 38, 40



FLEECE JOGGERS

8800 UNISEX

- + 7.8 oz. 100% Polyester fleece
- + Side pockets
- + Elastic waist and bottom cuff
- + Drawstring closure
- + Back right pocket
- + Sizes: S-3XL



NEW 8801 UNISEX

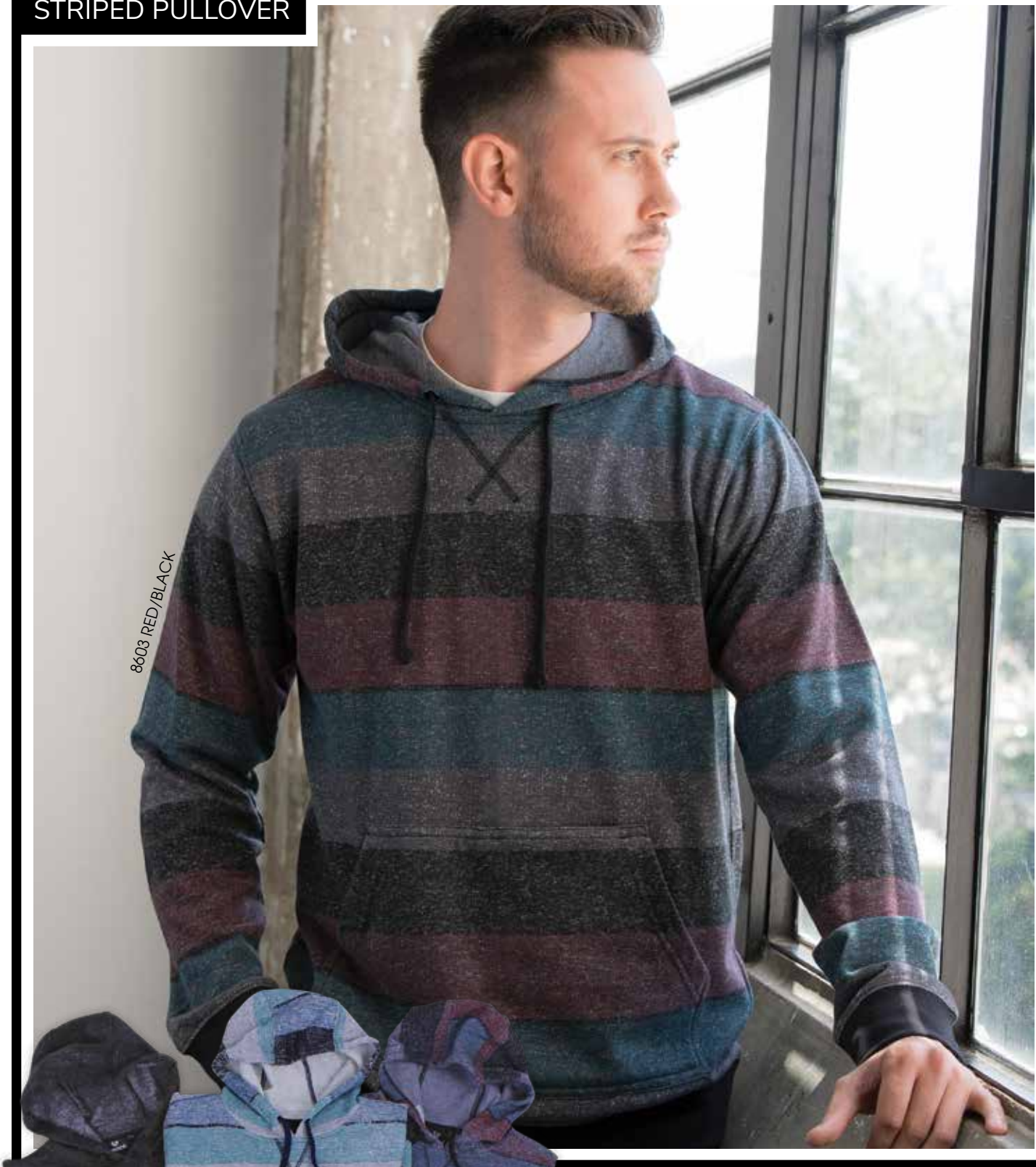
HEATHER PERFORMANCE JOGGER

- + 6 oz. 100% poly
- + Elastic waistband
- + Black drawcord
- + Faux fly
- + Knee piping
- + Back pocket
- + Side zipper pockets
- + Hem cuffs



Due to special finishing process color shades may vary

STRIPED PULLOVER



8603 RED/BLACK



BLACK/CHARCOAL

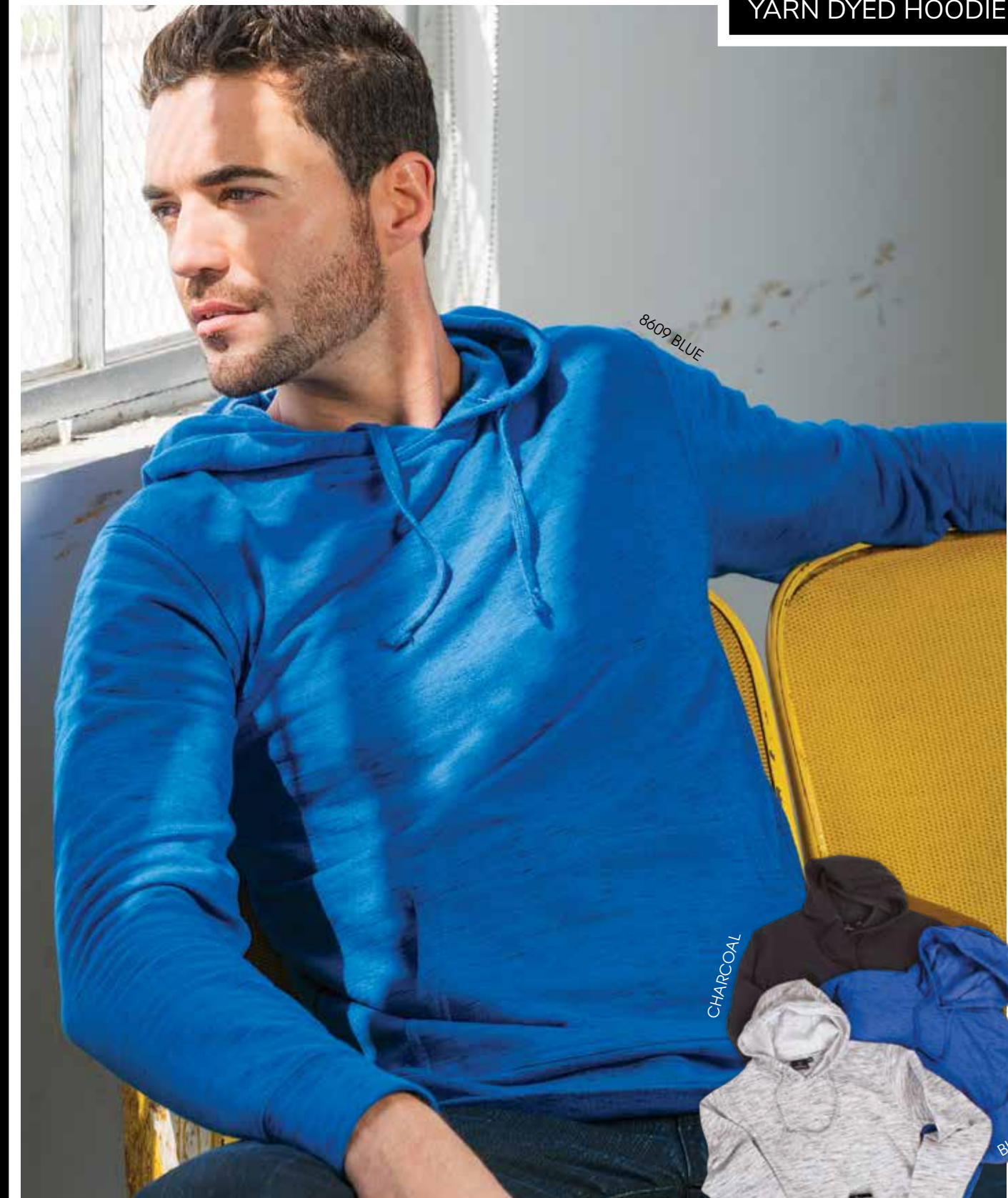
LT. BLUE/BLACK

RED/BLACK

- + 8.2 oz. 55/45 cotton/polyester
- + Stitched V neck detailing
- + Zippered cell phone pocket
- + Black drawstring
- + Elastic rib cuffs & hem
- + Front pouch pockets
- + Modern fit
- + Sizes: S-3XL

8603 MENS

YARN DYED HOODIE



8609 BLUE

CHARCOAL

BLUE



HEATHER

8609 MENS

- + 7.8 oz. 80/20 cotton/poly
- + Drawstring hood
- + Front pouch pockets
- + Zippered phone pocket
- + Elastic rib cuffs and hem
- + Modern fit
- + Sizes: S-3XL

CAMO HOODIE



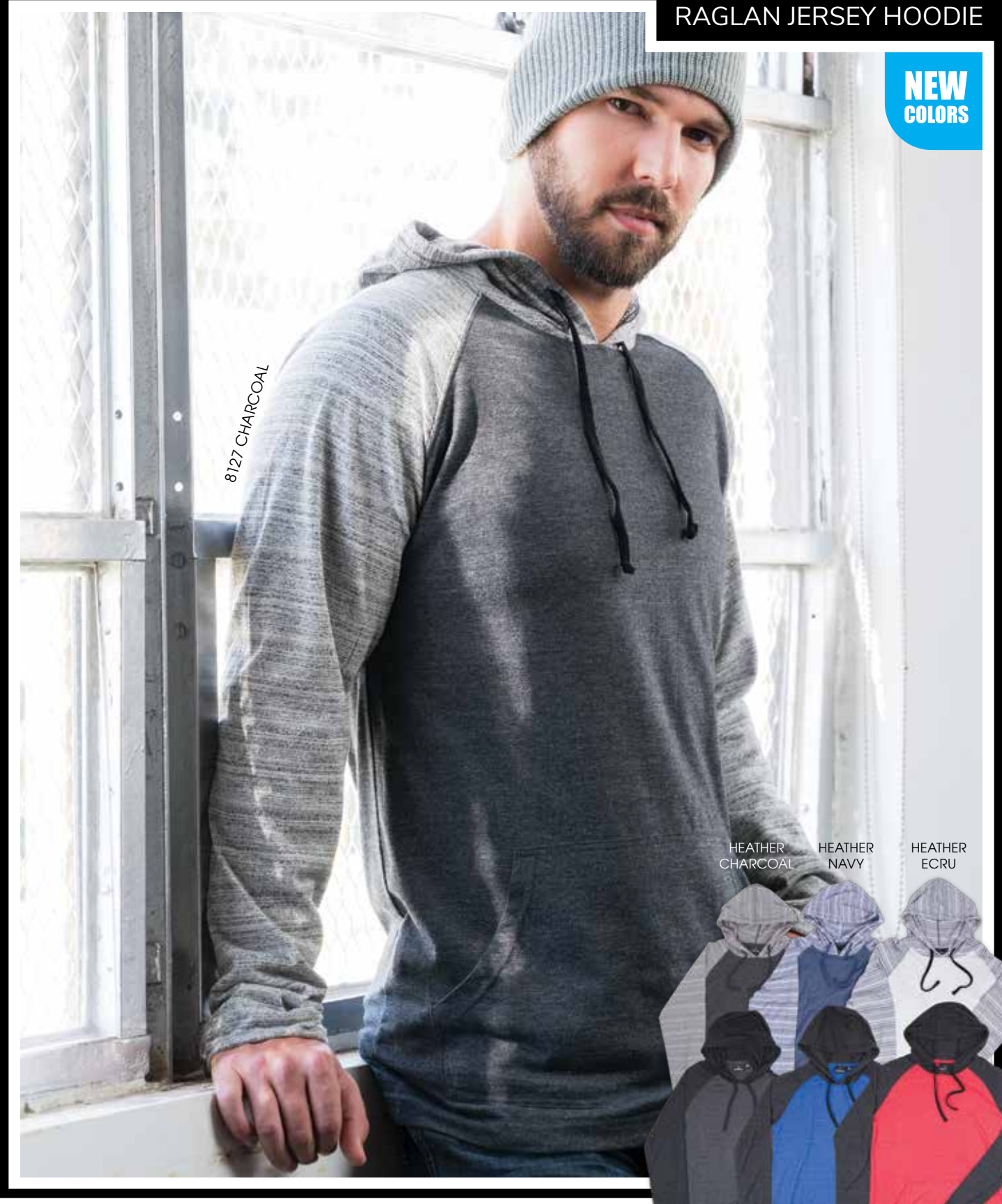
8615 GREEN CAMO



- + 6.8 oz. fleece
- + Black: 70/30 cotton/poly
- + Green: 100% cotton
- + Black drawstring
- + Front pouch pockets
- + Rib bottom & cuffs
- + Nylon zipper
- + Sizes: S-3XL

8615 MENS

RAGLAN JERSEY HOODIE



8127 CHARCOAL

NEW
COLORS



- + 4.9 oz. 65/35 cotton/polyester
- + Heathered jersey body
- + Striped sleeves and hood
- + Front pouch pockets
- + Hem cuffs & bottom
- + Raglan sleeves
- + Size: S-3XL

8127 MENS

NEW
STRIATED BLACK/
BLACK

NEW
STRIATED ROYAL/
STRIATED BLACK

NEW
STRIATED RED/
STRIATED BLACK

PERFORMANCE HOODIE

NEW
STYLE

8660 BLACK/HEATHER CHARCOAL



8660 | MENS

- + 6 oz. 100% polyester
- + Contrast raglan sleeves
- + Front pouch pockets
- + Overlock stitching detail
- + Hem bottom & cuffs
- + Nylon zipper
- + Black drawcord
- + Sizes: S-3XL

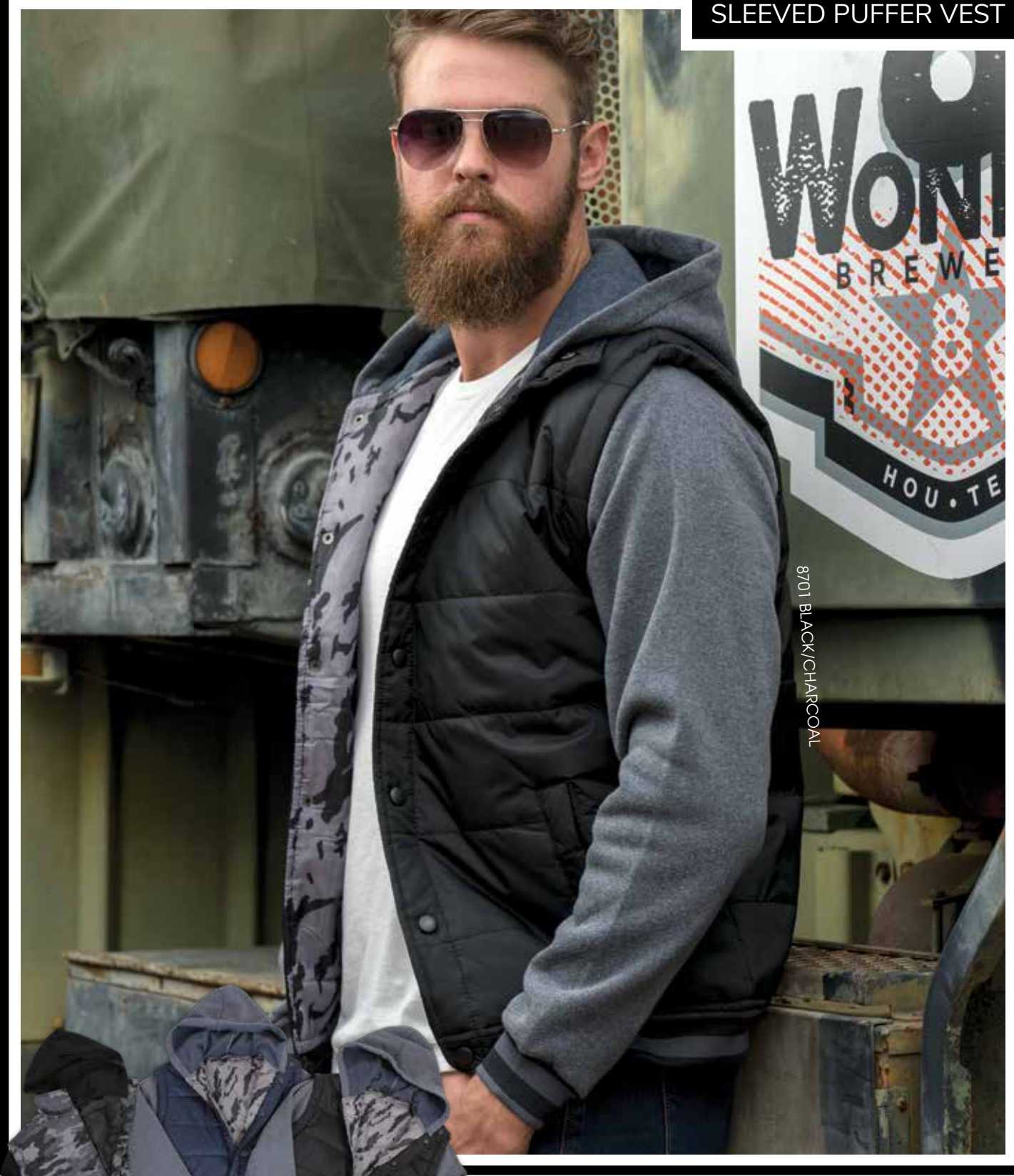


BLACK/HEATHER CHARCOAL
HEATHER GREY/HEATHER CHARCOAL
HEATHER NAVY/HEATHER CHARCOAL

Due to special finishing process color shades may vary

SLEEVED PUFFER VEST

8701 BLACK/CHARCOAL



BLACK CAMO/BLACK NAVY/CHARCOAL BLACK/CHARCOAL

- + 8.5 oz. 100% poly shell
- + 100% poly fleece insert sleeves
- + Snap front, 2 slash pockets
- + Rib bottom and cuffs
- + Camo interior lining
- + Black camo has solid rib cuffs
- + Sizes: S-3XL

8701 | MENS

HOODED FLANNEL JACKET



8620 MENS

- + 5.4 oz. 100% cotton shell, 100% poly filling
- + Sherpa lined hood with drawcords
- + Full zip front with nylon zipper
- + Side pockets
- + 2 chest pocket with flaps
- + Adjustable button cuffs
- + Sizes: S-3XL



BLACK/GREY RED/NAVY GREY/BLUE

QUILTED FLANNEL JACKET



BLACK KHAKI CHARCOAL RED/BLACK

8610 MENS

- + 4.1 oz. 55/45 cotton/poly flannel shell
- + 100% poly lining
- + Quilted nylon inside lining
- + Button down front
- + 2 chest pockets with flaps
- + Side pockets
- + Sizes: S-3XL

PUFFER VEST



- + 4.0 oz. 100% polyester
- + Heavy fill insulation
- + Barrel toggle waistband
- + Side entry pockets
- + Zipper pull cover on collar
- + Sizes: S-3XL

8700 MENS

8651 MENS INSERT TRACK JACKET

- + 8.5 oz. 55/45 cotton/poly
- + Contrast convertible collar
- + Contrast inserts and piping
- + Side entry pockets
- + Dyed to match zipper
- + Solid cuffs and bottom hem
- + Sizes: S-3XL



8653 RED/BLACK/WHITE



8653 MENS

Varsity Ribbed
Track Jacket

- + 8.5 oz. 55/45 cotton/poly
- + Striped convertible collar
- + Contrast sleeve and inserts
- + Side entry pockets
- + Dyed to match zipper
- + Varsity striped rib cuffs
- + Varsity striped hem
- + Raglan sleeves
- + Sizes: S-3XL



Digital catalogs of all our brands are available online. Our family of brands include Sierra Pacific Apparel®, FeatherLite®, Hilton Bowling Retro®, Speed Zone® Race Gear Burnside® and Rawlings®:

www.burnsideapparel.com

www.sierrapacificapparel.com

www.featherliteapparel.com

www.hiltoncc.com

www.rawlingsapparel.com



ASI 87224

PPAI 184396

SAGE 67536

WWW.BURNSIDEAPPAREL.COM