



NEXT LEVEL
APPAREL™

2018 CATALOG



MEN'S • WOMEN'S • CO-ED • YOUTH



FREEDOM TO CHOOSE.

We started with a simple but powerful idea.....create a favorite tee crafted from superior fabrics in sizes and fits for real people and make it available in all the best colors at a value second to none. We gave you the freedom to choose an inspirational shirt worthy of your message or design.

We destroyed the notion of the disposable tee. From those early days we have built a following of loyal and valued customers that have spread the word about what is happening at Next Level Apparel. For that we thank you and continue the commitment to add innovative fabrics like sueded jersey and mock twist.



In 2018, building on that foundation, we have pushed the boundaries adding new dynamic choices. You now have the freedom to choose a made in the USA version of our 100% cotton and tri-blend basics. You now have the freedom to choose 2 new sustainable styles in organic cotton, recycled cotton and recycled poly. You now have the freedom to choose from our festival collection of 4 exciting new women's styles, that flow and drape in sun washed colors with cutting edge sewing detail. You now have the freedom to choose new fleece

styles that take the softness and printability of your favorite tee transformed into a cozy favorite sweatshirt. There is so much more to visit and fall in love with inside our new catalog. Please enjoy the 2018 version of Next Level Apparel and the freedom to choose a shirt that is made to inspire you. We look forward to seeing you at a tradeshow or wherever you use and decorate your favorite shirt. We thank you for choosing Next Level Apparel.

Mark Segura

Chief Sales Officer

TABLE OF CONTENTS

WOMEN			MEN		
3900A	USA Boyfriend Tee	8	3600A	USA Men's Cotton Crew	8
3900	Boyfriend Tee	14	6010A	USA Men's Tri-Blend Crew	9
6610	Women's CVC Tee	15	3600	Men's Cotton Crew	12
6640	Women's CVC Deep V	22	6210	Men's CVC Crew	13
3904	Women's Cotton Ringer Tee	27	3200	Men's Cotton V	20
6710	Women's Tri-Blend Tee	34-35	3633	Men's Cotton Tank	20
6740	Women's Tri-Blend Deep V	36	6240	Men's CVC V	21
6760	Women's Tri-Blend Dolman	38	6233	Men's CVC Tank	21
6730	Women's Tri-Blend Scoop	39	3601	Men's Cotton L/S Crew	24
6733	Women's Tri-Blend Racerback Tank	40	3602	Men's Cotton Long Body Crew	25
6734	Women's Tri-Blend Racerback Tank Dress	41	3604	Men's Cotton Ringer Tee	28-29
6731	Women's Tri-Blend L/S Scoop	42	6010	Men's Tri-Blend Crew	34-35
5033	Women's Festival Tank	52	6040	Men's Tri-Blend V	37
5013	Women's Festival Muscle Tank	53	6071	Men's Tri-Blend L/S Crew	43
5040	Women's Festival Sleeveless V	54	6072	Men's Tri-Blend L/S Henley	44
5030	Women's Festival Scoop	55	2050	Men's Mock Twist Raglan Crew	61
6521	Women's Burnout Hoody	62	6333	Men's Muscle Tank	76
6533	Women's Burnout Racerback Tank	62	6410	Men's Sueded Crew	83
3533	Women's Spandex Jersey Tank	63	6440	Men's Sueded V	84
6633	Women's Spandex Jersey Racerback Tank	63	9800	Men's Denim Fleece Jogger	99
3300L	Perfect Tee	64	UNISEX		
3400L	Perfect Sporty V	65	3605	Cotton Pocket Crew	23
6951	Women's French Terry 3/4 Raglan	66	3650	Cotton Raglan Tee	30-31
6931	Women's French Terry L/S Scoop	67	6021	Unisex Tri-Blend L/S Hoody	45
6933	Women's French Terry Racerback Tank	67	6051	Unisex Tri-Blend 3/4 Raglan	46-47
1510	Women's Ideal Tee	68-69	6200	Poly/Cotton Crew	49
1540	Women's Ideal V	68-69	4600	Eco Heavyweight Tee	58
1560	Women's Ideal Dolman	70	4210	Eco Performance Tee	59
6360	Women's Roll Sleeve Dolman	71	2021	Unisex Mock Twist Raglan Hoody	60
1533	Ideal Racerback Tank	72	7410	Inspired Dye Crew	78
6338	Women's Gathered Racerback Tank	73	7401	Inspired Dye L/S Crew	79
1534	Ideal Color Block Racerback Tank	74-75	7433	Inspired Dye Tank	80
6480	Women's Sueded V	85	7415	Inspired Dye Pocket Crew	81
9801	Women's Denim Fleece Jogger	99	7451	Inspired Dye L/S Pocket Crew	81
9603	Women's PCH Raglan Zip Hoody	100	6411	Sueded L/S Crew	86
			6491	Sueded Zip Hoody	87
			8201	Unisex L/S Thermal	88
			8221	Unisex Thermal Hoody	89
			9301	French Terry Pullover Hoody	90-91
			9601	French Terry Zip Hoody	92
			9000	French Terry Raglan Crew	93
			9001	80/20 Fleece Crew w/Pocket	94
			9303	80/20 Fleece Pullover Hoody	95
			9602	80/20 Fleece Zip Hoody	96
			9600	Denim Fleece Zip Hoody	98
			9300	PCH Pullover Hoody	101
			9700	PCH Bomber Jacket	102-103
			YOUTH		
			3310	Boy's Cotton Crew	16
			3312	Boy's CVC Crew	16
			3710	Girl's Princess Tee	17
			3712	Girl's CVC Princess Tee	17
			3352	Youth CVC 3/4 Raglan	18
			3110	Toddler Cotton Tee	19
			6310	Boy's Tri-Blend Crew	34-34
			9103	80/20 Fleece Youth Zip Hoody	97
			COLLECTIONS		
			USA Next Level America	8-9	
			CVC/Cotton (Fine Jersey)	10-31	
			Tri-Blend Collection	32	
			Poly/Cotton	48-55	
			Festival Collection	50-55	
			Sustainable Collection	56-59	
			Mock Twist Jersey	60-61	
			Burnout	62	
			Spandex Jersey	623	
			Lightweight Cotton Jersey	64-65	
			Lightweight French Terry	66-67	
			Ideal T/ Lightweight Cotton Poly	68-76	
			Inspired Dye	77-81	
			Sueded Jersey	82-87	
			Thermal	88	
			Fleece	90	
			OTHER		
			Intro	2	
			Style Index	4-5	
			New Styles	6-7	
			Fabrics	104-105	
			Extended Sizes	106	
			Size Guide	107	
			Specs	108-111	
			Print Guide	112-113	
			Index	114	
			Color Card	115-118	

STYLE INDEX

WOMEN



3900
Boyfriend Tee
pg.14



3900A
USA Boyfriend Tee
pg.8



3904
Women's Cotton
Ringer Tee
pg.27



6610
Women's CVC Tee
pg.15



6640
Women's CVC
Deep V
pg.22



6480
Women's
Sueded V
pg.85



6710
Women's Tri-Blend
Tee
pg.34-35



6740
Women's Tri-Blend
Deep V
pg.36



6730
Women's Tri-Blend
Scoop
pg.39



6760
Women's Tri-Blend
Dolman
pg.38



6731
Women's Tri-Blend
L/S Scoop
pg.42



6733
Women's Tri-Blend
Racerback Tank
pg.40



6734
Tri-Blend Racerback
Tank Dress
pg.41



3300L
Women's Perfect Tee
pg.64



3400L
Women's Perfect V
pg.65



3533
Women's Spandex
Jersey Tank
pg.63



6633
Women's Spandex
Jersey Racerback
Tank - pg.63



6533
Women's Burnout
Racerback Tank
pg.62



6521
Women's Burnout L/S
Hoody
pg.62



5033
Women's Festival
Tank
pg.52



5013
Women's Festival
Muscle Tank
pg.53



5040
Women's Festival
Sleeveless V
pg.54



5030
Women's Festival
Scoop
pg.55



6951
Women's French
Terry 3/4 Raglan
pg.66



6931
Women's French
Terry L/S Scoop
pg.67



6933
Women's French
Terry Racerback
Tank - pg.67



1510
Women's Ideal Tee
pg.68-69



1540
Women's Ideal V
pg.68-69



1533
Women's Ideal
Racerback Tank
pg.72



1534
Women's Ideal
Colorblock
Racerback Tank
pg.74-75



1560
Women's Ideal
Dolman
pg.70



6338
Women's Gathered
Racerback Tank
pg.76



6360
Women's Roll Sleeve
Dolman
pg.71



9603
Women's PCH
Raglan Zip Hoody
pg.100



9801
Women's Denim
Fleece Jogger
pg.99

MEN



3600
Men's Cotton
Crew
pg.12



3600A
USA Men's Cotton
Crew
pg.8



3604
Men's Cotton
Ringer Tee
pg.28-29



3605
Men's Cotton
Pocket Crew
pg.23



3601
Men's Cotton
L/S Crew
pg.24



3200
Men's Cotton
V
pg.20



3633
Men's Cotton
Tank
pg.20



3602
Men's Cotton
Long Body Crew
pg.25



6210
Men's CVC Crew
pg.13



6240
Men's CVC V
pg.21



6233
Men's CVC Tank
pg.21



6410
Men's Sueded
Crew
pg.83



6440
Men's Sueded V
pg.84



6333
Men's Muscle Tank
pg.76



6010
Men's Tri-Blend
Crew
pg.34-35



6010A
USA Men's
Tri-Blend Crew
pg.9



6040
Men's Tri-Blend V
pg.37



6071
Men's Tri-Blend
L/S Crew
pg.43



6072
Men's Tri-Blend
L/S Henley
pg.44



2050
Men's Mock Twist
Raglan Crew
pg.61



9800
Men's Denim
Fleece Jogger
pg.99

STYLE INDEX

UNISEX



3650
Cotton Raglan
Tee
pg.30-31



6200
Poly/Cotton Crew
pg.49



4600
Eco Heavyweight
Tee
pg.58



4210
Eco Performance
Tee
pg.59



6411
Sueded L/S Crew
pg.86



6051
Unisex Tri-Blend 3/4
Raglan
pg.46-47



6021
Unisex Tri-Blend L/S
Hoody
pg.45



8201
Unisex L/S Thermal
pg.88



8221
Unisex Thermal
Hoody
pg.89



2021
Unisex Mock Twist
Raglan Hoody
pg.60



7410
Inspired Dye Crew
pg.78



7415
Inspired Dye Pocket
Crew
pg.81



7401
Inspired Dye L/S
Crew
pg.79



7451
Inspired Dye L/S
Pocket Crew
pg.81



7433
Inspired Dye Tank
pg.80



6491
Sueded Zip Hoody
pg.87



9000
French Terry L/S
Crew
pg.93



9301
French Terry
Pullover Hoody
pg.90-91



9601
French Terry Zip
Hoody
pg.92



9001
80/20 Fleece Crew
with Pocket
pg.94



9303
80/20 Fleece Pullover
Hoody
pg.95



9602
80/20 Fleece Zip
Hoody
pg.96



9300
PCH Pullover
Hoody
pg.101



9700
PCH Bomber Jacket
pg.102-103



9600
Denim Fleece Zip
Hoody
pg.98

YOUTH



3710
Girl's Princess
Tee
pg.17



3712
Girl's Princess
CVC Tee
pg.17



3310
Boy's Cotton
Crew
pg.16



3312
Boy's CVC Crew
pg.16



6310
Boy's Tri-Blend
Crew
pg.34-35



3352
Youth CVC 3/4
Raglan
pg.18



3110
Toddler Cotton
Tee
pg.19



9103
80/20 Fleece
Youth Zip Hoody
pg.97

2018

NEW STYLES



3110: Toddler's Cotton Tee pg.19



3604: Men's Cotton Ringer Tee pg.28-29



3904: Women's Cotton Ringer Tee pg.27



3650: Cotton Raglan Tee pg.30-31



3605: Cotton Pocket Crew pg.23



4210: Eco Performance Tee pg.59



4600: Eco Heavyweight Tee pg.58



3600A: USA Men's Cotton Crew pg.8



3900A: USA Boyfriend Tee pg.8



6010A: USA Men's Tri-Blend Crew pg.9



5013: Women's Festival Muscle Tank pg.53



5030: Women's Festival Scoop pg.55



5033: Women's Festival Tank pg.52



5040: Women's Festival Sleeveless V pg.54



6411: Sueded L/S Crew pg.86



9103: 80/20 Fleece Youth Zip Hoody pg.97



9602: 80/20 Fleece Zip Hoody pg.96



9001: 80/20 Fleece Crew with Pocket pg.94



9303: 80/20 Fleece Pullover Hoody pg.95



9700: PCH Bomber Jacket pg.102-103



9603: Women's PCH Raglan Zip Hoody pg.100



BORN IN THE USA. MADE TO INSPIRE.



NEW!

3900A | USA WOMEN'S BOYFRIEND TEE

Fine Jersey. 100% Combed Ring-Spun Cotton (Heather Gray 90% Cotton/10% Poly.) 32 Single 145g/4.3oz. Set-in Collar 1x1 Baby Rib. USA Made. Tear away label.

Model wearing size S

XS-3XL



black



white



heather
gray

NEW!

3600A | USA MEN'S COTTON CREW

Fine Jersey. 100% Combed Ring-Spun Cotton (Heather Gray 90% Cotton/10% Poly.) 32 Single 145g/4.3oz. Set-in Collar 1x1 Baby Rib. USA Made. Tear away label.

Model wearing size M

XS-3XL



black



white



heather
gray



red



military
green



midnight
navy



royal



NEW!

6010A | USA MEN'S TRI-BLEND CREW

Tri-Blend Jersey. 25% Combed Ring-Spun Cotton/50% Poly/25% Rayon. 32 Single 145g/4.3oz. Set-in Collar 1x1 Tri-Blend Baby Rib. USA Made. Tear away label.

Model wearing size M

XS-3XL



vintage
black



heather
white



premium
heather



indigo



military
green



vintage
navy



vintage
royal



vintage
red

2 FABRICS.

NL #3600

MEN'S COTTON CREW

Fine Jersey
32 Single 145g/4.3oz
100% Combed Ring-Spun Cotton
(Heather Gray 90 Cotton/10Poly)

29 SOLID COLORS

Plus Heather Gray



XS-3XL; select colors 4XL

14 FABRIC COMPANION STYLES



PRINTER'S FAVORITE

100% COTTON TEE



2 FAVORITES.



NL #6210

MEN'S CVC CREW

CVC Jersey
32 Single 145g/4.3oz
60% Combed Ring-Spun Cotton
40% Poly

28 HEATHERED COLORS

Plus Solid Black + White



XS-3XL; select colors 4XL

7 FABRIC COMPANION STYLES



PRINTER'S FAVORITE
60 COTTON /40 POLY TEE

FAVORITE.



3600 | MEN'S COTTON CREW

Fine Jersey. 32 Single 145g/4.3oz 100% Combed Ring-Spun Cotton (Heather Gray 90% Cotton/10% Poly). Our best-selling ring-spun tee. The perfect printing staple. Set-in Collar 1x1 Baby Rib. Side Seamed. Tear Away Label.

Model wearing size M.

All colors XS-3XL; Select colors 4XL⁴

Companion Styles: 3900, 3710, 3310, 3110





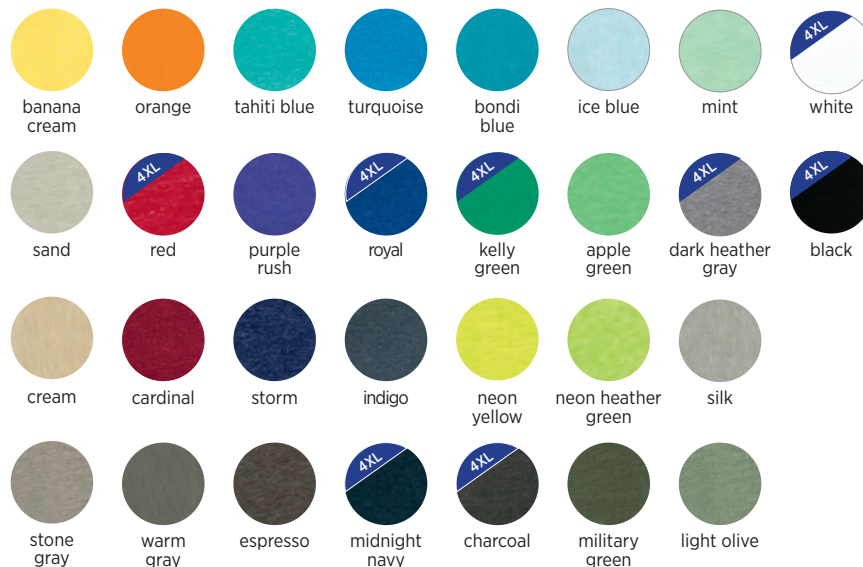
6210 | MEN'S CVC CREW

CVC Jersey. 32 Single 145g/4.3oz 60% Combed Ring-Spun Cotton 40% Poly. Top of the line fabric that stands up to consistent wear without sacrificing fit or feel. Perfect for all your favorite heathered colors plus solid white and black. Set-in Collar 1x1 CVC Baby Rib. Side seamed. Tear Away Label.

Model wearing size M.

XS-3XL; Select colors 4XL⁴

Companion Styles: 6610, 3712, 3312





3900 | BOYFRIEND TEE

Fine Jersey. 32 Single 145g/4.3oz 100% Combed Ring-Spun Cotton (Heather Gray 90% Cotton/10% Poly.) Her version of his shirt. Top selling ring-spun tee in a wide variety of colors. Side seamed. Set-in Collar 1x1 Baby Rib. Tear Away Label.

Model wearing size S.

XS-3XL

Companion Styles: 3600, 3710, 3310, 3110





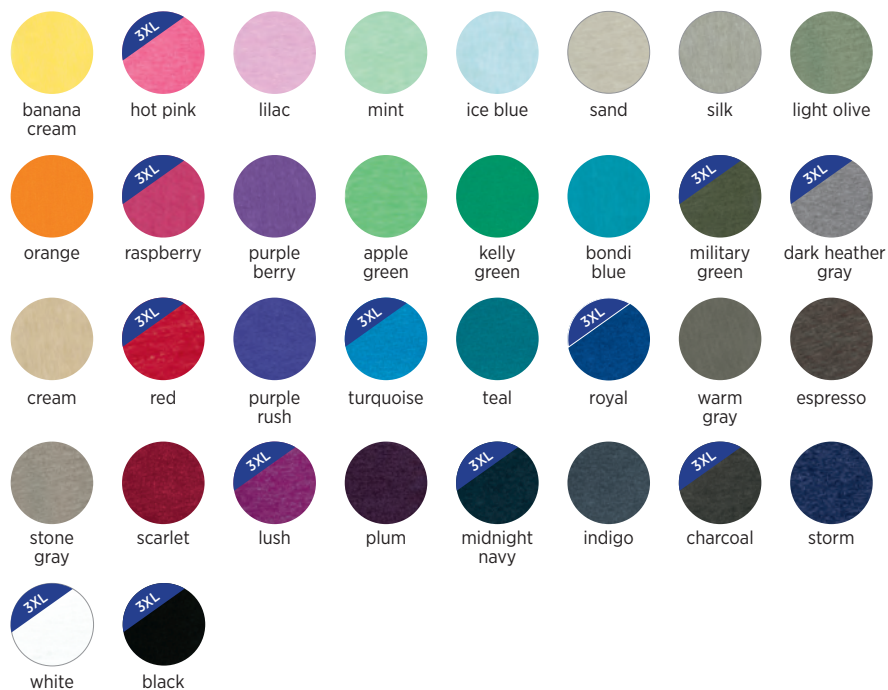
6610 | WOMEN'S CVC TEE

CVC Jersey. 32 Single 145g/4.3oz 60% Combed Ring-Spun Cotton 40% Poly. Top of the line fabric that stands up to consistent wear without sacrificing fit or feel. Perfect for all your favorite heathered colors plus solid white and black. Side seamed with feminine curve. Set-in Collar 1x1 CVC Baby Rib. Tear Away Label.

Model wearing size S.

XS-2XL; Select colors 3XL

Companion Styles: 6210, 3712, 3312





3310 | BOY'S COTTON CREW

Fine Jersey. 32 Single 145g/4.3 oz 100% Combed Ring-Spun Cotton (Heather Gray 90% Cotton/10% Poly). Top selling ring-spun fabric in a variety of colors. Side seamed. Set-in Collar 1x1 Baby Rib. Tear Away Label.
Model wearing size L.

XS(4/5)-XL(14/16)

Companion Styles: 3600, 3900, 3710, 3110



3312 | BOY'S CVC CREW

CVC Jersey. 32 Single 145g/4.3oz 60% Combed Ring-Spun Cotton 40% Poly. Top of the line fabric that stands up to consistent wear without sacrificing fit or feel. Perfect for your favorite heathered colors plus solid white and black. Side seamed. Set-in Collar 1x1 CVC Baby Rib. Tear Away Label.
Model wearing size L.

XS(4/5) - XL(14/16)

Companion Styles: 6610, 6210, 3712



3710 | GIRL'S PRINCESS TEE

Fine Jersey. 32 Single 145g/4.3oz 100% Combed Ring-Spun Cotton (Heather Gray 90% Cotton/10% Poly). Top selling ring-spun fabric in a variety of colors. Side seamed and tailored for girls sized 3/4 through 14/16. Set-in Collar with Front Cover Stitch 1x1 Baby Rib. Tear Away Label. *Model wearing size M.*

XS(3/4)-XL(14/16)

Companion Styles: 3600, 3900, 3310, 3110



3712 | GIRL'S PRINCESS CVC TEE

CVC Jersey. 32 Single 145g/4.3oz 60% Combed Ring-Spun Cotton 40% Poly. Top of the line fabric that stands up to consistent wear without sacrificing fit or feel. Perfect for your favorite heathered colors. Side seamed and tailored for girls. Set-in Collar with Front Cover Stitch 1x1 CVC Baby Rib. Tear Away Label. *Model wearing size S.*

XS (3/4) - XL (14/16)

Companion Styles: 6610, 6210, 3312





listed: sleeve/body



hot pink/white



red/white



royal/white



kelly green/white



black/white



black/
dark heather gray



lilac/
dark heather gray



ice blue/
dark heather gray



midnight navy/
dark heather gray

3352 | YOUTH CVC 3/4 RAGLAN

CVC Jersey. 32 Single 145g/4.3oz 60% Combed Ring-Spun Cotton 40% Poly. Top of the line fabric that stands up to consistent wear without sacrificing fit or feel. Collar and cover stitch are the color of the sleeves. Set-in collar. Side seamed. Tear away label.

Models wearing size L (boy) and S (girl).

XS(4/5) - XL(14/16)

Companion Style: 6051



NEW!

3110 | TODDLER COTTON TEE

Fine Jersey. 32 Single 145g/4.3 oz 100% Combed Ring-Spun Cotton (Heather Gray 90% Cotton/10% Poly). Set in collar 1x1 baby rib. Hemmed sleeves. Side seamed. Tear Away Label.

Model wearing size 3T.

2T, 3T, 4T

Companion Style: 3600, 3900, 3710, 3310



light pink



light blue



heather
gray



white



black



red



vibrant
yellow



kelly
green



royal



midnight
navy



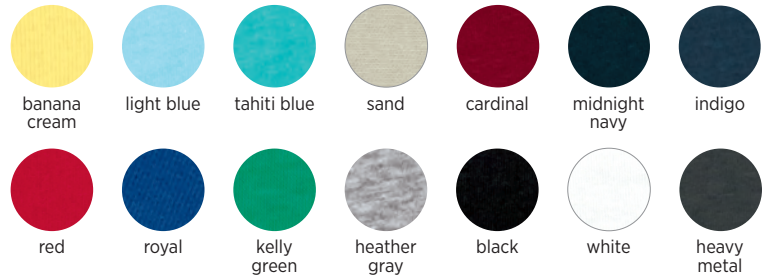


3200 | MEN'S COTTON V

Fine Jersey. 32 Single 145g/4.3oz 100% Combed Ring-Spun Cotton (Heather Gray 90% Cotton/10% Poly). Top selling ring-spun fabric, a perfect printing staple. Side seamed Set-in Collar 1x1 Baby Rib. Tear Away Label.

Model wearing size M.

XS-2XL

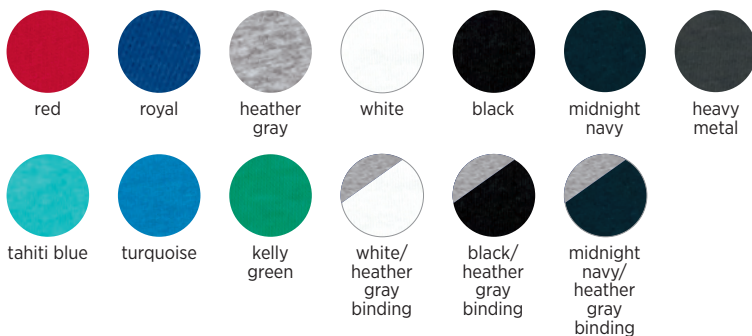


3633 | MEN'S COTTON TANK

Fine Jersey. 32 Single 145g/4.3oz 100% Combed Ring-Spun Cotton (Heather Gray 90% Cotton/10% Poly). Top selling ring-spun fabric. Self-fabric binding, contrasting where noted. Side seamed. Tear Away Label.

Model wearing size M.

S-2XL



6240 | MEN'S CVC V

CVC Jersey. 32 Single 145g/4.3oz 60% Combed Ring-Spun Cotton 40% Poly. Top of the line fabric that stands up to consistent wear without sacrificing fit or feel. Perfect for all your favorite heathered colors plus solid white and black. Set-in collar. Side seamed. Set-in Collar 1x1 CVC Baby Rib. Tear Away Label.

Model wearing size M.

S-2XL

Companion Style: 6640

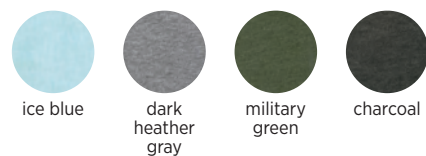


6233 | MEN'S CVC TANK

CVC Jersey. 32 Single 145g/4.3oz 60% Combed Ring-Spun Cotton 40% Poly. Top of the line fabric that stands up to consistent wear without sacrificing fit or feel. Perfect in heathered colors. Self-fabric binding. Side seamed. Tear Away Label.

Model wearing size M.

S-2XL





6640 | WOMEN'S CVC DEEP V

CVC Jersey. 32 Single 145g/4.3oz 60% Combed Ring-Spun Cotton 40% Poly. Top of the line fabric that stands up to consistent wear without sacrificing fit or feel. Perfect for all your favorite heathered colors plus solid white and black. Side seamed with feminine curve. Tear away label. Set-in Collar 1x1 Baby Rib. Tear Away Label.

Model wearing size S.

S-2XL

Companion Style: 6240





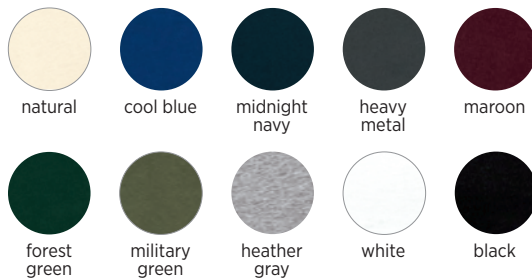
NEW!

3605 | COTTON POCKET CREW

Fine Jersey. 32 Single 145g/4.3oz 100% Combed Ring-Spun Cotton (Heather Gray 90% Cotton/10% Poly). Five point left chest pocket. Hemmed sleeves. Side seamed. Set in collar 1x1 baby rib. Tear Away Label.

Female model wearing size S and male model wearing size M.

XS-3XL





3601 | MEN'S COTTON L/S CREW

Fine Jersey. 32 Single 145g/4.3oz 100% Combed Ring-Spun Cotton (Heather Gray 90% Cotton/10% Poly). Top selling ring-spun fabric, a perfect printing staple. Hemmed sleeves. 1x1 baby-rib set-in collar. Side seamed. Tear Away Label.

Model wearing size M.

S-2XL



red



royal



heather
gray



white



military
green



midnight
navy



cardinal



cool blue



heavy
metal



black



indigo





3602 | MEN'S COTTON LONG BODY CREW

Fine Jersey. 32 Single 145g/4.3 oz 100% Combed Ring-Spun Cotton (Heather Gray 90% Cotton/10% Poly). Top selling ring-spun fabric. 1x1 baby-rib set-in collar. Curved bottom hem. Side seamed. Tear away label.

Model wearing size M.

S-3XL



black



heather
gray



white



RETRO.



VINTAGE STYLE WITH A MODERN FIT AND TIMELESS COMFORT

Fine Jersey. 100% combed ring-spun cotton. 32 singles, 4.3oz.





NEW!

3904 | WOMEN'S COTTON RINGER TEE

Fine Jersey. 32 Single 145g/4.3oz 100% Combed Ring-Spun Cotton. Contrast 1x1 baby rib, bound neck and sleeves. Side seamed. Tear away label.

Model wearing size S.

S-2XL

listed: body/binding





NEW!

3604 | MEN'S COTTON RINGER TEE

Fine Jersey. 32 Single 145g/4.3oz 100% Combed Ring-Spun Cotton (Heather Gray 90% Cotton/10% Poly). Contrast 1x1 baby rib, bound collar and sleeves. Side seamed. Tear away label.

Model wearing size M.

XS-3XL

colors listed: body/binding



natural/maroon



natural/forest green



natural/midnight navy



natural/black



heather gray/ black



white/black



3650 | COTTON RAGLAN TEE

Fine Jersey, 32 Single 145g/4.3oz 100% Combed Ring-Spun Cotton (Heather Gray 90% Cotton/10% Poly). Contrast raglan sleeves and bound neck. Side seamed. Tear Away Label.

Model wearing size M (above) and S (left).

XS-3XL

colors listed: sleeve/body



maroon/natural



forest green/natural



midnight navy/
natural



black/natural



black/white



black/black



natural/black



warm gray/black



antique gold/black



black/heather gray



royal/heather gray

HANDCRAFTED.



TRI-BLEND COLLECTION

A PERFECT BLEND THAT IS INCREDIBLY SOFT WITH GREAT
DRAPE, STRETCH AND RECOVERY.

YOUR FAVORITE VINTAGE LOOK IN 14 HANDCRAFTED STYLES.

32 Single 145g/4.3oz 50% Poly 25% Combed Ring-Spun Cotton 25% Rayon



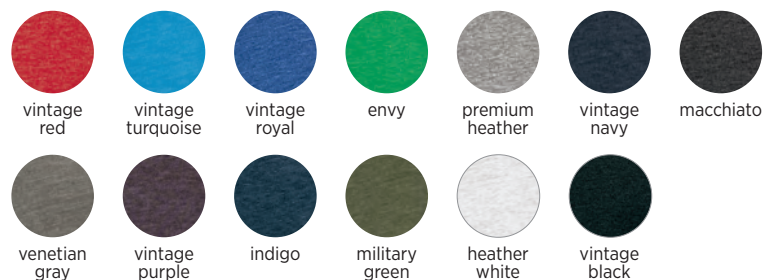


6010 | MEN'S TRI-BLEND CREW

Tri-Blend Jersey. 32 Single 145g/4.3oz 50% Poly 25% Combed Ring-Spun Cotton 25% Rayon. A perfect blend that is incredibly soft with great drape, stretch and recovery. Heathered colors with a vintage look. Side seamed. 1x1 tri-blend baby rib set-in collar. Satin label.

Model wearing size M.

XS-3XL



6310 | BOY'S TRI-BLEND CREW

Tri-Blend Jersey. 32 Single 145g/4.3oz 50% Poly 25% Combed Ring-Spun Cotton 25% Rayon. Kids will appreciate this incredibly soft, lightweight fabric. Heathered colors with a great vintage look. Side seamed. 1x1 tri-blend baby rib set-in collar. Satin label.

Model wearing size L.

XS(4/5)-XL(14/16)



6710 | WOMEN'S TRI-BLEND TEE

Tri-Blend Jersey. 32 Single 145g/4.3oz 50% Poly 25% Combed Ring-Spun Cotton 25% Rayon. A perfect blend that is incredibly soft with great drape, stretch and recovery. Heathered colors with a vintage look. Side seamed with feminine curve. 1x1 tri-blend baby rib set-in collar with front cover stitch. Satin label.

Model wearing size S.

S-2XL







6740 | WOMEN'S TRI-BLEND DEEP V

Tri-Blend Jersey. 32 Single 145g/4.3oz 50% Poly 25% Combed Ring-Spun Cotton 25% Rayon. A perfect blend that is incredibly soft with great drape, stretch and recovery. Heathered colors with a vintage look. Side seamed with feminine curve. 1x1 tri-blend baby rib set-in collar, Satin label.

Model wearing size S.

S-2XL





6040 | MEN'S TRI-BLEND V

Tri-Blend Jersey. 32 Single 145g/4.3oz 50% Poly 25% Combed Ring-Spun Cotton 25% Rayon. A perfect blend that is incredibly soft with great drape, stretch and recovery. Heathered colors with a vintage look. Side seamed. 1x1 tri-blend baby rib set-in collar. Satin label.

Model wearing size M.

S-2XL



vintage
turquoise



vintage
royal



envy



heather
white



vintage
red



vintage
navy



military
green



premium
heather



vintage
black





6760 | WOMEN'S TRI-BLEND DOLMAN

Tri-Blend Jersey. 32 Single 145g/4.3oz 50% Poly 25% Combed Ring-Spun Cotton 25% Rayon. Heathered colors with a vintage look. Dolman has a flowy fit that is flattering for all. Side seamed. 1x1 tri-blend baby rib set-in collar with front cover stitch. Satin label.

Model wearing size S.

XS-3XL





6730 | WOMEN'S TRI-BLEND SCOOP

Tri-Blend Jersey. 32 Single 145g/4.3oz 50% Poly 25% Combed Ring-Spun Cotton 25% Rayon. A perfect blend that is incredibly soft with great drape, stretch and recovery. Heathered colors with a vintage look. Side seamed with feminine curve. Very flattering scoop neckline. 1x1 tri-blend baby rib set-in collar with front cover stitch. Satin label.

Model wearing size M.

S-2XL





6733 | WOMEN'S TRI-BLEND RACERBACK TANK

Tri-Blend Jersey. 32 Single 145g/4.3oz 50% Poly 25% Combed Ring-Spun Cotton 25% Rayon. A perfect blend that is incredibly soft with great drape, stretch and recovery. Heathered colors with a vintage look. Flatlock finished hems for a raw edge look. Side seamed. Satin label.

Model wearing size S.

XS-2XL





6734 | WOMEN'S TRI-BLEND RACERBACK TANK DRESS

Tri-Blend Jersey. 32 Single 145g/4.3oz 50% Poly 25% Combed Ring-Spun Cotton 25% Rayon. A perfect blend that is incredibly soft with great drape, stretch and recovery. Versatile silhouette works as a dress or cover-up. Heathered colors with a vintage look. Self-fabric binding. Side seamed. Tear away label.

Model wearing size S.

XS-2XL



indigo



vintage
black





6731 | WOMEN'S TRI-BLEND L/S SCOOP

Tri-Blend Jersey. 32 Single 145g/4.3oz 50% Poly 25% Combed Ring-Spun Cotton 25% Rayon. A perfect blend that is incredibly soft with great drape, stretch and recovery. Heathered colors with a vintage look. Side seamed. Flattering scoop neckline. 1x1 tri-blend baby rib set-in collar with front cover stitch. Satin label.

Model wearing size S.

S-2XL



vintage
red



vintage
turquoise



vintage
royal



envy



venetian
gray



vintage
purple



vintage
navy



military
green



heather
white



premium
heather



vintage
black



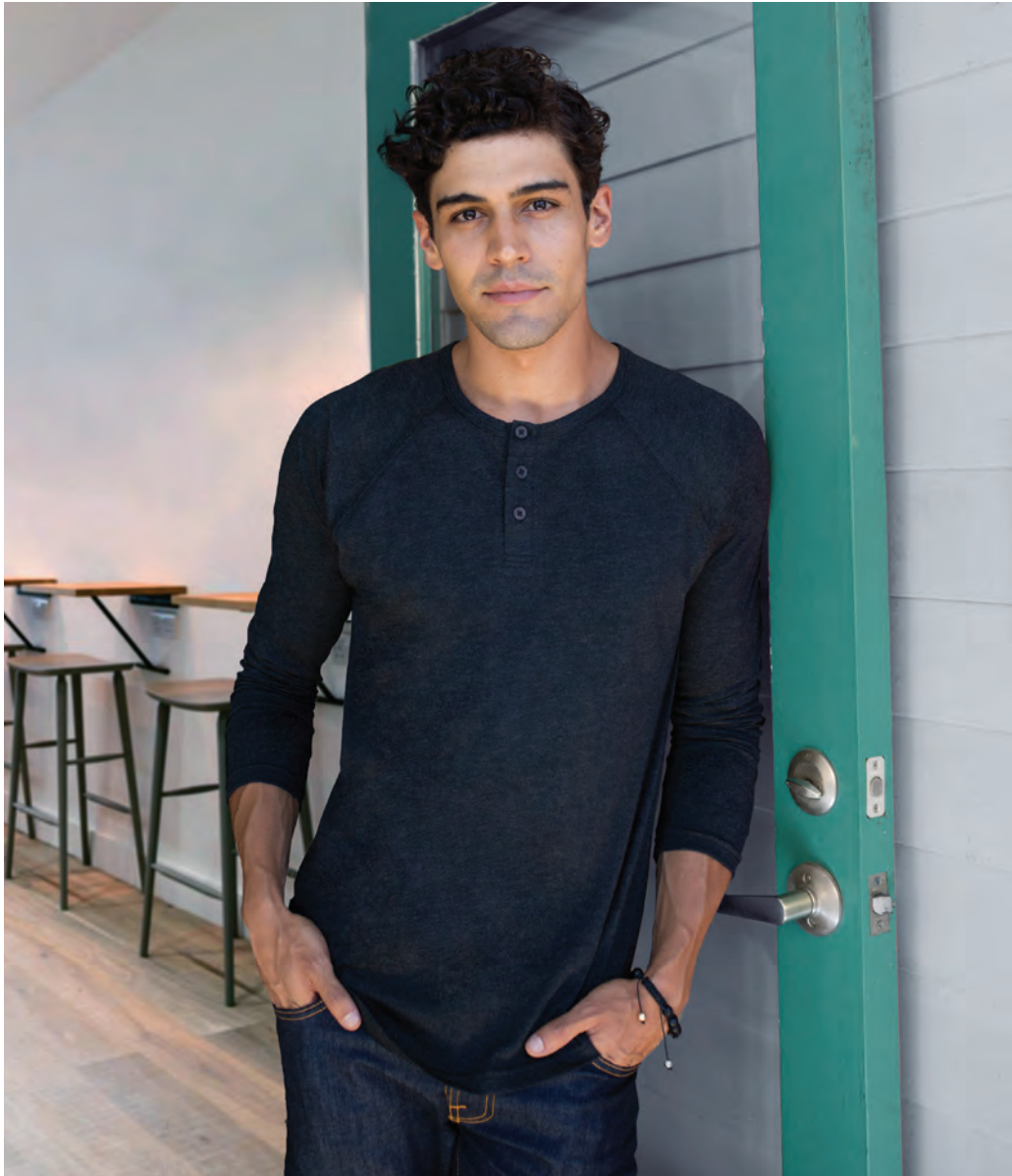


6071 | MEN'S TRI-BLEND L/S CREW

Tri-Blend Jersey. 32 Single 145g/4.3oz 50% Poly 25% Combed Ring-Spun Cotton 25% Rayon. A perfect blend that is incredibly soft with great drape, stretch and recovery. Heathered colors with a vintage look. Side seamed. 1x1 tri-blend baby rib set-in collar. Hemmed sleeves. Satin label.
Model wearing size M.

XS-2XL





6072 | MEN'S TRI-BLEND L/S HENLEY

Tri-Blend Jersey. 32 Single 145g/4.3oz 50% Poly 25% Combed Ring-Spun Cotton 25% Rayon. A perfect blend that is incredibly soft with great drape, stretch and recovery. Heathered colors with a vintage look. Side seamed. Dyed to match buttons, 3 button placket. Raglan sleeves, hemmed. Satin label.
Model wearing size M.

S-2XL



heather
white



vintage
black



premium
heather



vintage
navy





6021 | UNISEX TRI-BLEND L/S HOODY

Tri-Blend Jersey. 32 Single 145g/4.3oz 50% Poly 25% Combed Ring-Spun Cotton 25% Rayon. A perfect blend that is incredibly soft with great drape, stretch and recovery. Heathered colors with a vintage look. Side seamed. 1x1 tri-blend baby rib cuffs. Three piece, single layer hood. Satin label.

Models wearing size M (Male) and XS (Female).

XS-2XL



colors listed: sleeve/body



vintage pink/
heather white



tahiti blue/
heather white



vintage royal/
heather white



purple rush/
heather white



vintage red/
heather white



envy/
heather white



indigo/
heather white



vintage purple/
heather white



vintage red/
premium heather



envy/
premium heather



vintage black/
heather white



venetian gray/
heather white



vintage navy/
premium heather



vintage royal/
premium heather



vintage black/
premium heather



premium heather/
heather white



vintage red/
vintage black



vintage black/
vintage black



premium heather/
vintage black



6051 | UNISEX TRI-BLEND 3/4 RAGLAN

Tri-Blend Jersey. 32 Single 145g/4.3oz 50% Poly 25% Combed Ring-Spun Cotton 25% Rayon. A perfect blend that is incredibly soft with great drape, stretch and recovery. Heathered colors with a vintage look. Side seamed. 1x1 tri-blend baby rib set-in collar. Collar and cover stitch are the color of the sleeves. Curved bottom hem. Satin label.

Models wearing size XS (above). Models to the right wearing size M (male) and XS (female).

XS-3XL



FESTIVAL INSPIRED.



PERFECT FOR SUBLIMATION

OUR SOFT AND BREATHABLE LIGHTWEIGHT POLY/COTTON IS PERFECT
FOR WORKING OUT AND IDEAL FOR SUBLIMATION PRINTING.

65/35 Poly Cotton Jersey. 40 Single 120g/3.5oz 65% Poly 35% Combed Ring-Spun Cotton

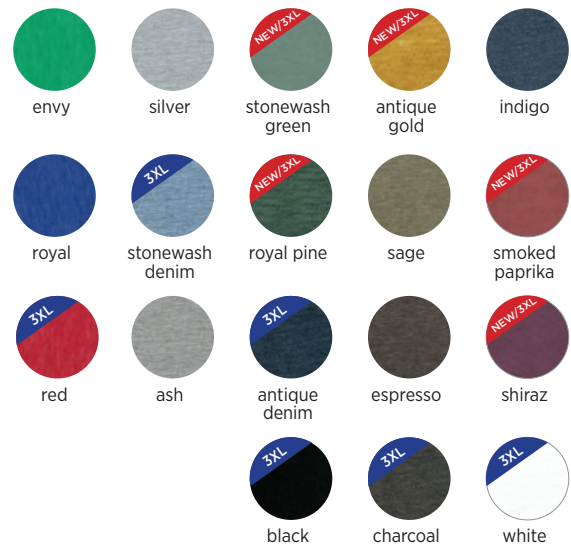


6200 | POLY/COTTON CREW

65/35 Poly Cotton Jersey. 40 Single 120g/3.5oz 65% Poly 35% Combed ring-spun cotton. Set-in Collar with front cover stitch. Satin label.

Models wearing size M (male) and XS (female).

XS-2XL; select colors in 3XL
New size in bold.







Festival

COLLECTION

FEEL THE VIBES IN OUR FLOWY FREE-SPIRITED FESTIVAL COLLECTION

Poly/Cotton Jersey. 65% poly 35% combed ring-spun cotton 40 singles, 3.5oz. 11 colors. XS-2XL.





NEW!

5033 | WOMEN'S FESTIVAL TANK

65/35 Poly/Cotton. 40 Single 120g/3.5oz. 65% Poly/35% Combed Ring-Spun Cotton. Scoop neckline. Hemmed neck and armhole. Side seamed. Curved hem. Feminine drape. Tear away label.

Model wearing size S.

XS-2XL



stonewash
denim



stonewash
green



royal pine



antique
denim



white



black



ash



antique
gold



smoked
paprika



shiraz



charcoal





NEW!

5013 | WOMEN'S FESTIVAL MUSCLE TANK

65/35 Poly/Cotton. 40 Single 120g/3.5oz. 65% Poly/35% Combed Ring-Spun Cotton. Relaxed muscle fit tank. Hemmed, oversized armholes. 1x1 baby rib neckline. Side seamed. Slight droptail hem. Tear away label.

Model wearing size S.

XS-2XL





NEW!

5040 | WOMEN'S FESTIVAL SLEEVELESS V

65/35 Poly/Cotton. 40 Single 120g/3.5oz. 65% Poly/35% Combed Ring-Spun Cotton. Self-fabric bound v-neck and armhole. Side seamed. Modestly curved hem. Tear away label.

Model wearing size S.

XS-2XL



stonewash
denim



stonewash
green



royal pine



antique
denim



white



black



ash



antique
gold



smoked
paprika



shiraz



charcoal





NEW!

5030 | WOMEN'S FESTIVAL SCOOP

65/35 Poly/Cotton. 40 Single 120g/3.5oz. 65% Poly/35% Combed Ring-Spun Cotton. 1x1 baby rib, scoop neckline. Hemmed sleeve. Side seamed. Raw edge, exaggerated droptail hem. Relaxed fit. Tear away label.

Model wearing size S.

XS-2XL



stonewash
denim



stonewash
green



royal pine



antique
denim



white



black



ash



antique
gold



smoked
paprika



shiraz



charcoal





INTRODUCING THE
SUSTAINABLE
COLLECTION



**“WE DO NOT INHERIT
THE EARTH FROM
OUR ANCESTORS;
WE BORROW IT FROM
OUR CHILDREN.”**

-NATIVE AMERICAN PROVERB



NEXT LEVEL
SUSTAINABLE™

SUSTAINABLE.



NEW!

4600 | ECO HEAVYWEIGHT TEE

60% Organic Cotton 40% Recycled Poly RPET.

20 single, 190g/5.6 oz. New sustainable heavier weight fabric with a premium soft hand. Side seamed. Unisex fit. Tear away label.

Models wearing size XS (female) and M (male).

XS - 3XL



white



royal pine



heather
pacific



black



dark
heather
gray



heather
teja



natural



heather
black





NEW!

4210 | ECO PERFORMANCE TEE

30% Recycled Cotton 30% Cotton 40% Recycled Poly RPET.

30 Single, 145g/4.3oz. Performance attributes with an incredibly soft hand. Fabric is made of 70% recycled material and has wicking performance that can draw moisture away from the skin. Set in collar 1x1 baby rib. Hemmed sleeves. Side seamed. Unisex fit. Tear away label.

Models wearing size XS (females) and M (male).

XS - 3XL



white



heather sapphire



cardinal



heavy metal



black



heather red



heather black



dark heather gray



midnight navy



ATHLEISURE.



2021 | UNISEX MOCK TWIST RAGLAN HOODY

Mock Twist Jersey. 20 Single, 175g/5.1oz 60% Combed Ring-Spun Cotton/40% Poly. Athleisure look with softness of a ring-spun/ poly blend. Side seamed. Raglan sleeve with contrast flat-lock top stitch. Hemmed sleeves and bottom. Curved bottom hem. Tear away label.

Models wearing size XS (female) and M (male).

XS-3XL



black



indigo



heather
gray



forest
green



light
maroon





2050 | MEN'S MOCK TWIST RAGLAN CREW

Mock Twist Jersey. 20 Single, 175g/5.1oz 60% Combed Ring-Spun Cotton/40% Poly. Athleisure look with softness of a ring-spun/ poly blend. Side seamed. Raglan sleeve with contrast flat-lock top stitch. Self-binding collar. Tear away label.

Models wearing size M.

S-3XL



black



indigo



heather
gray



forest
green



light
maroon





6521 | WOMEN'S BURNOUT HOODY

Burnout Jersey. 30 Single 125g/3.7oz 65% Poly 35% Combed Ring-Spun Cotton. Fashionable burnout fabric provides unique look and feel. V-neck, long sleeve tee with two-ply hood. Side seamed. 1x1 burnout baby-rib cuff and band. Satin label.

Model wearing size S.

S-2XL



tahiti blue



white



dark gray



black

6533 | WOMEN'S BURNOUT RACERBACK TANK

Burnout Jersey. 30 Single 125g/3.7oz 65% Poly 35% Combed Ring-Spun Cotton. Fashionable burnout fabric provides unique look and feel. Great stretch and softness. Side seamed. 1x1 burnout baby-rib binding. Satin label.

Model wearing size S.

XS-2XL



tahiti blue



neon green



neon pink



purple rush



dark gray



royal



neon orange



shocking pink



white



black



3533 | WOMEN'S SPANDEX JERSEY TANK

Spandex Jersey. 40 Single 145g/4.3 oz 57% Combed Ring-Spun Cotton 38% Poly 5% Spandex. Soft spandex jersey has great stretch and recovery. Self-fabric binding. Side seamed. Figure hugging silhouette. Scoop front and back neckline. Tear away label.

Model wearing size S.

XS-2XL



6633 | WOMEN'S SPANDEX JERSEY RACERBACK TANK

Spandex Jersey. 40 Single 145g/4.3 oz 57% Combed Ring-Spun Cotton 38% Poly 5% Spandex. Soft spandex jersey has great stretch and recovery. Self-fabric binding. Side seamed. Fitted silhouette. Tear away label.

Model wearing size S.

XS-2XL





3300L | PERFECT TEE

Lightweight Jersey. 34 Single 135g/4.0oz 100% Combed Ring-Spun Cotton (Heather Gray 90% Cotton/10% Poly; Neon Colors 60% Cotton/40% Poly). Comfortable lightweight jersey. Side seamed figure hugging silhouette. 1x1 baby rib set-in collar with front cover stitch. Satin label.

Model wearing size M.

S-2XL





3400L | PERFECT SPORTY V

Lightweight Jersey. 34 Single 135g/4.0oz 100% Combed Ring-Spun Cotton (Heather Gray 90% Cotton/10% Poly; Neon Colors 60% Cotton/40% Poly). Comfortable lightweight jersey. Side seamed figure hugging silhouette. Modest V-neck. Self-fabric set-in collar with front cover stitch. Satin label.

Model wearing size S.

S-2XL



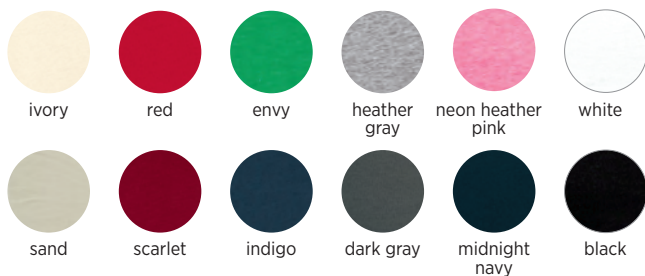


6951 | WOMEN'S FRENCH TERRY 3/4 RAGLAN

Lightweight French Terry. 30 Single 165g/4.9oz 50% Poly 50% Combed Ring-Spun Cotton (Heather Gray 93% Cotton/7% Poly). Ultra-soft and lightweight. Raw edge at neck. Side seamed. Self-fabric cuffs and waistband. NAFTA friendly U.S.A. fabric assembled in Mexico. Satin label.

Model wearing size S.

S-2XL



6931 | WOMEN'S FRENCH TERRY L/S SCOOP

Lightweight French Terry. 30 Single 165g/4.9oz 50% Poly 50% Combed Ring-Spun Cotton (Heather Gray 93% Cotton/7% Poly). Ultra-soft and lightweight. Scoop neck, drop shoulders, long sleeves. Self-fabric collar, cuffs and waistband. NAFTA friendly U.S.A. fabric assembled in Mexico. Side seamed. Satin label.

Model wearing size S.

S-2XL



6933 | WOMEN'S FRENCH TERRY RACERBACK TANK

Lightweight French Terry. 30 Single 165g/ 4.9oz 50% Poly 50% Combed Ring-Spun Cotton. Ultra-soft and lightweight. Raw edge at neck. NAFTA friendly U.S.A. fabric assembled in Mexico. Side seamed. Hemmed neck, armholes and bottom. Satin label.

Model wearing size S.

XS-2XL



IDEAL.



1510 | WOMEN'S IDEAL TEE

Lightweight Cotton Poly Jersey. 30 Single 135g/4.0oz 60% Combed Ring-Spun Cotton 40% Polyester. Lightweight combed ring-spun cotton and poly blend. Relaxed crew neckline, set-in collar 1x1 baby rib with front cover stitch. Side seamed. Colors are solid unless otherwise noted. Tear away label.

Model wearing size S.

XS-2XL; Select colors in 3XL³

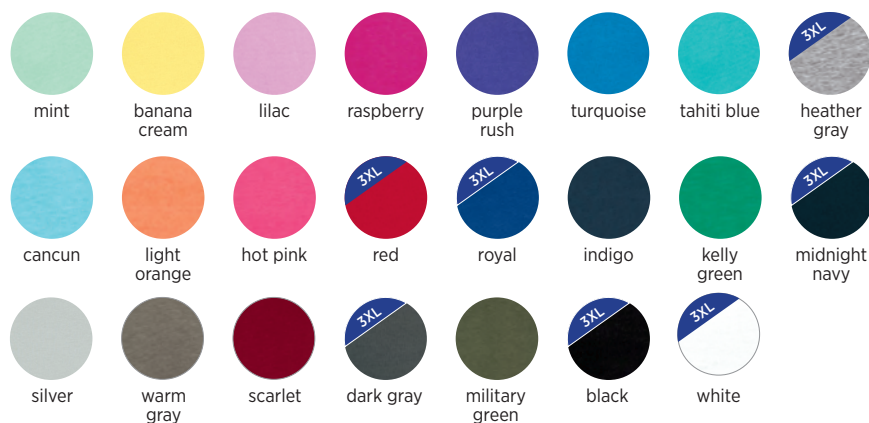


1540 | WOMEN'S IDEAL V

Lightweight Cotton Poly Jersey. 30 Single 135g/4.0oz 60% Combed Ring-Spun Cotton 40% Polyester. Lightweight combed ring-spun cotton and poly blend. Modest v-neck, set-in collar 1x1 baby rib with front cover stitch. Side seamed. Colors are solid unless otherwise noted. Tear away label.

Model wearing size S.

XS-2XL; Select colors in 3XL³





1560 | WOMEN'S IDEAL DOLMAN

Lightweight Cotton Poly Jersey. 30 Single 135g/4.0oz 60% Combed Ring-Spun Cotton 40% Polyester. Lightweight combed ring-spun cotton and poly blend. Dolman cut has a flowy fit that is flattering for all. Set-in 1x1 baby rib collar. Side seamed. Curved hem. Colors are solid unless otherwise noted. Tear away label.

Model wearing size S.

XS-3XL





6360 | WOMEN'S ROLL SLEEVE DOLMAN

Lightweight Cotton Poly Jersey. 30 Single 135g/4.0oz 60% Combed Ring-Spun Cotton 40% Polyester. Set-in Collar 1x1 Baby Rib. Tear Away Label.
Model wearing size S.

XS-2XL



red



turquoise



heather
gray



white



black





1533 | WOMEN'S IDEAL RACERBACK TANK

Lightweight Cotton Poly Jersey. 30 Single 135g/4.0oz 60% Combed Ring-Spun Cotton 40% Polyester. Lightweight combed ring-spun cotton and poly blend. Racerback. Self-fabric binding. Side seamed. Curved hem. Colors are solid unless otherwise noted. Tear away label.

Model wearing size S.

XS-2XL





6338 | WOMEN'S GATHERED RACERBACK TANK

Lightweight Cotton Poly Jersey. 30 Single 135g/4.0oz 60% Combed Ring-Spun Cotton 40% Polyester. Set-in Collar 1x1 Baby Rib. Tear Away Label.

Model wearing size S.

XS-2XL





colors listed: front/back



black/red



black/white



black/ heather gray



white/black



white/royal



white/ hot pink



turquoise/
black



heather gray/
black



lilac/
heather gray

1534 | IDEAL COLOR BLOCK RACERBACK TANK

Lightweight Cotton Poly Jersey. 30 Single 135g/4.0oz 60% Combed Ring-Spun Cotton 40% Polyester. Lightweight combed ring-spun cotton and poly blend. Racerback. Self-fabric binding matches color of back panel. Side seamed. Curved hem. Colors are solid unless otherwise noted. Tear away label.

Model wearing size S.

XS-2XL





6333 | MEN'S MUSCLE TANK

Lightweight Cotton Poly Jersey. 30 Single 135g/4.0oz 60% Combed Ring-Spun Cotton 40% Polyester. Set-in Collar 1x1 Baby Rib. Side seamed, hemmed armhole. Tear Away Label.

Model wearing size M.

S-3XL



white



black



heather
gray



royal



midnight
navy



VINTAGE.

OUR GARMENT DYE PROCESS ALLOWS FOR SOFTER SHADES
AND FINISHES TO CAPTURE THE LIVED-IN LOOK AND FEEL OF
YOUR FAVORITE VINTAGE TEES.





7410 | INSPIRED DYE CREW

Inspired Dye. 24 Single 175g/5.2oz 100% Combed Ring-Spun Cotton. Combed ring-spun cotton adds to the softness of this Garment Dyed t-shirt. 1x1 baby rib set-in collar with front cover stitch. Side seamed. Twill tape at back neck. Tear away label.

Models wearing size M (male) and S (female).

XS-3XL





7401 | INSPIRED DYE L/S CREW

Inspired Dye. 24 Single 175g/5.2oz 100% Combed Ring-Spun Cotton. Garment dyed combed ring-spun cotton. 1x1 baby rib set in collar with front cover stitch and cuffs. Side seamed. Twill tape and back neck. Tear away label.

Models wearing size M (male) and S (female).

XS-3XL





7433 | INSPIRED DYE TANK

Inspired Dye. 24 Single 175g/5.2oz 100% Combed Ring-Spun Cotton. Combed ring-spun cotton that has been Garment Dyed. Side seamed. Self-fabric binding. Tear away label.

Models wearing size M (male) and S (female).

XS-3XL

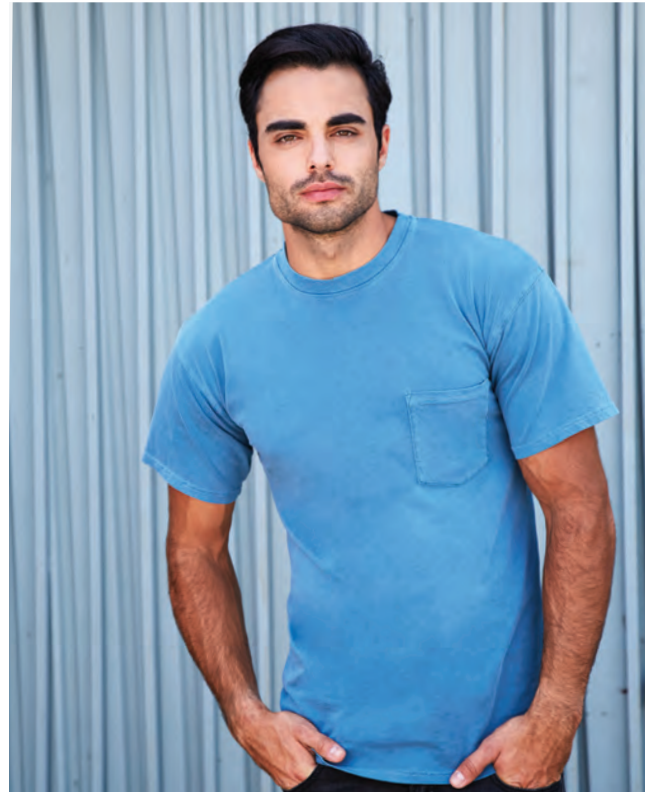


7415 | INSPIRED DYE POCKET CREW

Inspired Dye. 24 Single 175g/5.2oz 100% Combed Ring-Spun Cotton. Combed ring-spun cotton adds to the softness of this Garment Dyed t-shirt. 1x1 baby rib set-in collar with front cover stitch. Side seamed. Twill tape at back neck. Tear away label.

Model wearing size M.

XS-3XL



7451 | INSPIRED DYE L/S POCKET CREW

Inspired Dye. 24 Single 175g/5.2oz 100% Combed Ring-Spun Cotton. Garment dyed combed ring-spun cotton. 1x1 baby rib set in collar with front cover stitch and cuffs. Side seamed. Twill tape and back neck. Tear away label.

Model wearing size M.

XS-3XL



UNBELIEVABLE.



SUEDED COLLECTION

EXPERIENCE THE SOFT VELVET FEEL OF OUR
BRUSHED SUEDED FABRIC.

Sueded Jersey. 60% combed ring-spun 40% poly. 32 single, 4.3oz.

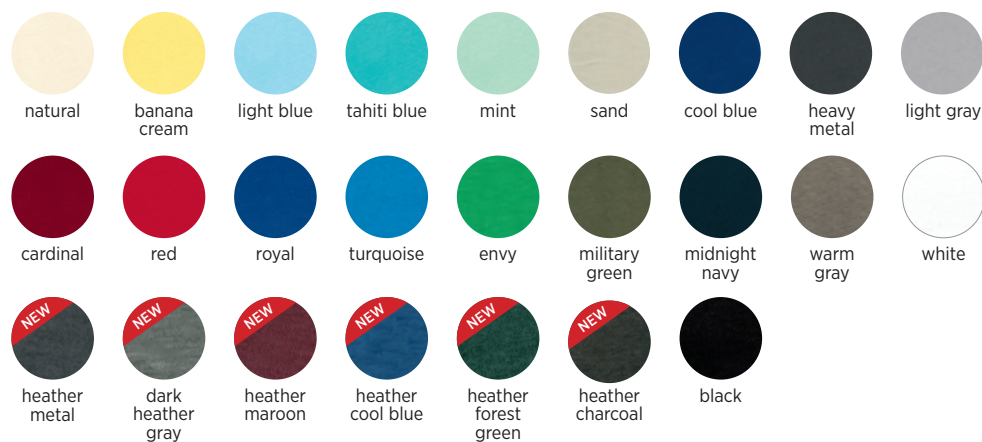


6410 | MEN'S SUEDED CREW

Sueded Jersey. 32 Single 145g/4.3oz 60% Combed Ring-Spun Cotton 40% Poly. Experience the velvet soft feel and the unique brushed finish of this incredible fabric. Available in solid and heathered colors. 1x1 sueded baby-rib set-in collar. Side seamed. Satin label.

Model wearing size M.

XS-3XL





6440 | MEN'S SUEDED V

Sueded Jersey. 32 Single 145g/4.3oz 60% Combed Ring-Spun Cotton 40% Poly. Experience the velvet soft feel and the unique brushed finish of this incredible fabric. 1x1 sueded baby-rib set-in collar. Side seamed. Satin label.

Model wearing size M.

XS-2XL

Companion Style: 6480





6480 | WOMEN'S SUEDED V

Sueded Jersey. 32 Single 145g/4.3oz 60% Combed Ring-Spun Cotton 40% Poly. Experience the velvet soft feel and the unique brushed finish of this incredible fabric. 1x1 sueded baby-rib set-in collar with front cover stitch. Side seamed. Satin label.

Models wearing size S.

XS-2XL

Companion Style: 6440



light blue



mint



banana
cream



raspberry



red



purple
rush



royal



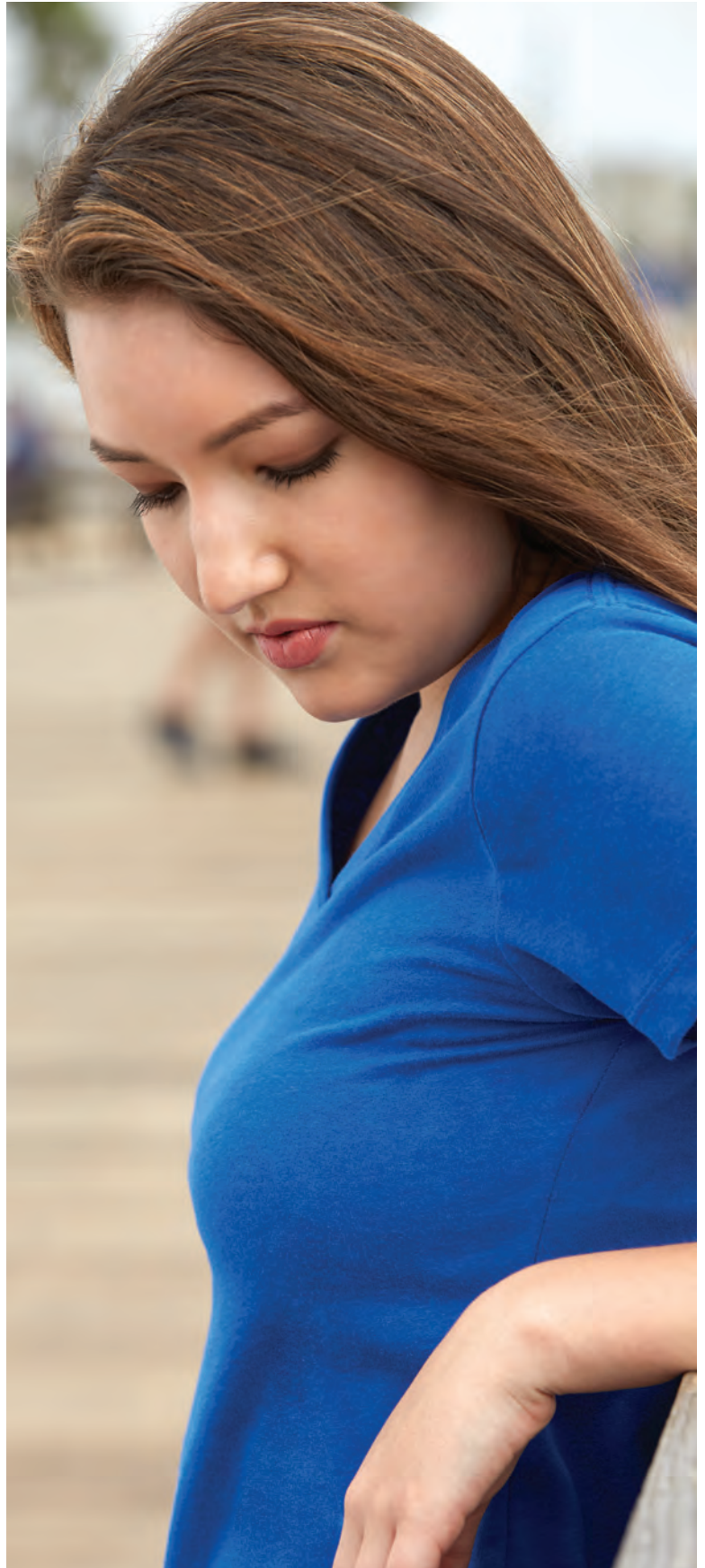
midnight
navy



black



white





NEW!

6411 | SUEDED L/S CREW

Sueded Jersey. 32 Single 145g/4.3oz 60% Combed Ring-Spun Cotton 40% Poly. Set-in Collar 1x1 Sueded Baby Rib. Velvet soft feel and unique brushed finish. Side seamed. Set in collar 1x1 sueded baby rib. 2" rib cuffs. Tear away label.

Models wearing size M.

XS-3XL



heather metal



dark heather gray



heather maroon



heather cool blue



heather forest green



heather charcoal



midnight navy



white



black



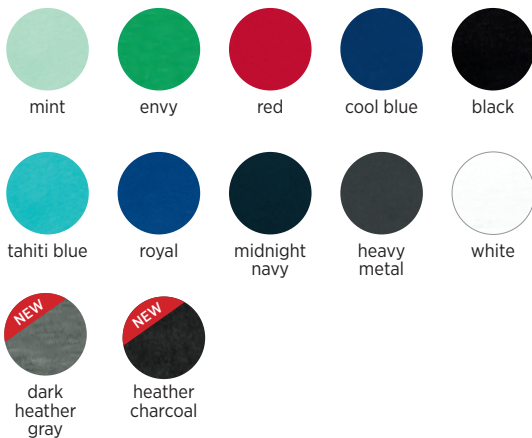


6491 | SUEDED ZIP HOODY

Sueded Jersey. 32 Single 145g/4.3oz 60% Combed Ring-Spun Cotton 40% Poly. Velvet soft feel that prints like a dream. Premium dyed matching #5 YKK kissing zipper, unlined hood, 1x1 ribbing at cuffs and waistband, unisex fit. Tear Away Label.

Models wearing size XS.

XS-3XL



TOASTY.



8201 | UNISEX L/S THERMAL

Waffle Thermal. 36 Single 190g/5.6 oz 60% Combed Ring-Spun Cotton 40% Poly. Incredibly soft and warm micro-waffle thermal. Smooth print surface. Self-fabric neck. 1x1 baby rib cuff. Side seamed. Flatlock stitched seams and hem. Contrast stitch offerings noted. Satin label.

Model wearing size M.

XS-2XL





8221 | UNISEX THERMAL HOODY

Waffle Thermal. 36 Single 190g/5.6 oz 60% Combed Ring-Spun Cotton 40% Poly. Incredibly soft and warm micro-waffle thermal. Smooth print surface. Self-fabric unlined hood. 1x1 baby rib cuff. Side seamed. Flatlock stitched seams and curved hem. Contrast stitch offerings noted. Satin label.

Models wearing size XS.

XS-3XL



royal



midnight
navy



heather
gray



heather
charcoal



white/
gray
(stitching)



black/
gray
(stitching)



COMFY.





heather gray/kelly green



heather gray/royal



heather gray/black



heather gray/midnight navy



white/heather gray



midnight navy/
heather gray



black/heather gray



black/red



black/gold



black/turquoise



royal/gold



red/black



black/black



heavy metal/heavy metal

colors listed: body/hood liner & drawcord

9301 | FRENCH TERRY PULLOVER HOODY

Midweight French Terry. 30 Single. 180g/5.3oz. 60% Cotton 40% Poly. Jersey lined contrasting and matching lined hood and drawcord, metal eyelets, 1x1 ribbing at cuffs and waistband, unisex fit. Tear away label.

Model wearing size M.

XS-3XL



9601 | FRENCH TERRY ZIP HOODY

Midweight French Terry. 30 Single. 180g/5.3oz. 60% Cotton 40% Poly. Jersey lined contrasting and matching lined hood and drawcord, metal eyelets, 1x1 ribbing at cuffs and waistband, unisex fit. Tear away label.

Models wearing size M (male) and XS (female).

XS-3XL



heather
gray/
heather
gray



black/
black



heavy
metal/
heavy
metal



midnight
navy/
heather
gray



white/
heather
gray



royal/
heather
gray

key:





9000 | FRENCH TERRY RAGLAN CREW

Midweight French Terry. 30 Single. 180g/5.3oz. 60% Cotton 40% Poly. Raglan sleeve, 1x1 ribbing at collar, waistband and cuffs, unisex fit. Tear away label.

Models wearing size M (male) and XS (female).

XS-3XL



midnight navy



heavy metal



heather gray



military green



black



red



royal



white





NEW!

9001 | 80/20 FLEECE CREW WITH POCKET

80/20 Fleece. 80% Cotton/20% Poly. 30 Single 250g/7.4oz. Front Pocket, Inside neck patch for printable label, Unisex Fit, 100% Cotton Face. Tear away label.

Models wearing size M (male) and XS (female).

XS-3XL



natural



maroon



forest green



midnight navy



heavy metal



white



black





NEW!

9303 | 80/20 FLEECE PULLOVER HOODY

80/20 Fleece. 80% Cotton/20% Poly. 30 Single 250g/7.4oz. Natural Drawcord, Jersey Lined Hood, Ribbed Cuffs and Band, Inside neck patch for printable label, Unisex Fit, 100% Cotton Face. Tear away label.

Models wearing size M (male) and XS (female).

XS-3XL



natural



maroon



forest green



midnight navy



heavy metal



white



black





NEW!

9602 | 80/20 FLEECE ZIP HOODY

80/20 Fleece. 80% Cotton/20% Poly. 30 Single. 250g/7.4oz. zipper, natural drawcord, jersey lined hood, ribbed cuffs and band, inside neck patch for printable label, unisex fit, 100% cotton face. Tear away label. Model wearing size M.

XS-3XL





NEW!

9103 | 80/20 FLEECE YOUTH ZIP HOODY

80/20 Fleece. 80% Cotton/20% Poly. 30 Single. 250g/7.4oz. No drawcord, ribbed cuffs and band, kissing zipper with dyed to match neck tape, inside neck patch for printable label, unisex fit, 100% cotton face. Tear away label. Models wearing size M (left), M (middle), L (right).

XS-XL





9600 | DENIM FLEECE ZIP HOODY

53% Cotton/47% Poly, 7.4oz heather denim-inspired fleece. Premium antique brass #5 YKK kissing zipper, drawcord, 1x1 ribbing at cuffs and waist, unisex fit. Tear away label.

Model wearing size XS.

XS-3XL



black



navy



plum



military
green



turquoise





9800 | MEN'S DENIM FLEECE JOGGER

53% Cotton/47% Poly, 7.4oz heather denim-inspired fleece. Side pockets, back pocket, solid color ribbed waistband and bottom cuffs, super-soft fleece. Tear away label.

Model wearing size M (male).

S-2XL



black



navy

9801 | WOMEN'S DENIM FLEECE JOGGER

53% Cotton/47% Poly, 7.4oz heather denim-inspired fleece. Side pockets, solid color ribbed waistband and bottom cuffs, super-soft fleece. Tear away label.

Model wearing size S (female).

XS-2XL



black



navy



9800



9801



NEW!

9603 | WOMEN'S PCH RAGLAN ZIP HOODY

PCH Fleece. 30 Single. 250g/7.4oz Heathered Fleece. 60% Cotton 40% Poly. Natural drawcord and contrast zipper, jersey lined hood, inside neck patch for printable label. Tear away label.

Model wearing size S.

XS-2XL



heather
black



heather
gray



heather
bay blue





9300 | PCH PULLOVER HOODY

PCH Fleece. 30 Single. 250g/7.4oz. 60% Cotton 40% Poly. Heathered fleece with unique pockets for a clean finished look. Metal eyelets, drawcord, 1x1 ribbing at cuffs, unisex fit. Tear away label.

Models wearing size XS (female) and M (male).

XS-3XL



heather cardinal



heather midnight navy



heather gray



heather black



heather military green



heather teal



heather bay blue



heather maroon



CLASSIC.





NEW!

9700 | PCH BOMBER JACKET

PCH Fleece. 30 Single. 250g/7.4oz. Heathered Fleece. 60% Cotton 40% Poly. Solid black ribbing on neck and cuffs, raglan sleeve, inside neck patch for printable label, unisex fit. Exposed premium antique brass YKK zipper. Tear away label.

Models wearing size M (male) and XS (female).

XS-3XL



heather
black



heather
military
green





Next Level Apparel has developed nineteen custom fabrics to fit your blank apparel needs. Our fabrics represent the prime combination of softness and stretch, ideally engineered for various types of embellishments. We utilize exclusive machinery and premium yarns which yield supreme results.

FINE JERSEY

100% Combed Ring-Spun Cotton and 90/10 Cotton/Polyester in color Heather Gray / 32 Single, 145 grams, 4.3oz

This fabric is comfortable and lightweight. Printer's preferred fabric for discharge printing.

LIGHTWEIGHT JERSEY

100% Combed Ring-Spun Cotton / 34 Single, 135 grams, 4.0oz

This lightweight fabric is washed to provide extraordinary softness, stretch, recovery and reduced shrinkage and torque.

CVC JERSEY

60% Combed Ring-Spun Cotton 40% Polyester / 32 Single, 145 grams, 4.3oz

Our Original CVC is a top of the line fabric that stands up to consistent wear without sacrificing the lived in feel everyone loves.

SUEDED JERSEY

60% Combed Ring-Spun Cotton 40% Polyester / 32 Single, 145 grams, 4.3oz

Unbelievably soft hand with an amazing brushed finish.

SPANDEX JERSEY

57% Combed Ring-Spun Cotton 38% Polyester 5% Spandex / 40 Single, 145 grams, 4.3oz

A soft, comfortable fabric with great stretch and memory.

LIGHTWEIGHT FRENCH TERRY

50% Combed Ring-Spun Cotton 50% Polyester and 93/7 Cotton/Polyester in color Heather Gray / 30 Single, 165 grams, 4.9oz

Extremely soft and comfortable.

TRI-BLEND JERSEY

50% Polyester 25% Combed Ring-Spun Cotton 25% Rayon / 32 Single, 145 grams, 4.3oz

This fabric is incredibly soft with great drape, stretch and recovery.

65/35 POLY/COTTON

65% Polyester 35% Combed Ring-Spun Cotton / 40 Single, 120 grams, 3.5 oz

This super silky fabric is lightweight yet durable. Test your favorite sublimation design for impressive results.

BURNOUT JERSEY

65% Polyester 35% Combed Ring-Spun Cotton / 30 Single, 125 grams, 3.7oz

This fashionable burnout fabric provides a unique look and feel with great stretch, comfort and softness.

WAFFLE THERMAL

60% Combed Ring-Spun Cotton 40% Polyester / 36 Single, 190 grams, 5.6oz

This lightweight waffle thermal has a low profile, creating a soft and supple hand.



LIGHTWEIGHT COTTON POLY JERSEY

60% Combed Ring-Spun Cotton 40% Polyester / 30 Single, 135 grams, 4.0oz

This fine gauge blended semi-sheer fabric represents a new benchmark in value. You will be amazed by the ultra-soft hand and performance of this exclusive fabric.

MOCK TWIST JERSEY

60% Combed Ring-Spun Cotton 40% Polyester / 20 Single, 175 grams, 5.1oz

A soft and silky hand with a snowy, textured look that is perfect for athleisure and lifestyle markets.

INSPIRED DYE

100% Combed Ring-Spun Cotton / 24 Single, 175 grams, 5.2oz

The garment dye process allows for softer shades and finishes to capture the lived-in look and feel of your favorite vintage tees.

ECO PERFORMANCE

30% Recycled Cotton 30% Cotton 40% Recycled Polyester (RPET) / 30 Single, 145 grams, 4.3oz

This fabric is made from 70% recycled materials and has wicking performance that can draw moisture away from the skin.

ECO HEAVYWEIGHT

60% Organic Cotton 40% Recycled Polyester (RPET) / 20 Single, 190 grams, 5.6oz

New sustainable heavier weight fabric with a premium soft hand.

PCH FLEECE

60% Cotton 40% Polyester Fleece / 30 Single, 250 grams, 7.4oz heathered fleece, 60/40 CVC face

Inspired by our top-selling CVC fabric, this heathered fleece is the perfect compliment to our CVC collection providing durability and printability.

MIDWEIGHT FRENCH TERRY

60% Cotton 40% Polyester Fleece / 30 Single, 180 grams, 5.3 oz midweight soft French Terry fabric

Our French Terry knit fabric features a soft hand and great stretch across the grain. With a smooth face for decorating and looped back for superior softness against the skin.

DENIM FLEECE

53% Cotton 47% Polyester / 250 grams, 7.4 oz heather denim-inspired fleece

Inspired by your favorite pair of jeans, our heather denim-inspired fleece gives this modern style a cool, vintage vibe. The decorating options are limitless on this printer friendly fabric.

80/20 FLEECE

80% Cotton 20% Polyester / 30 Single, 250 grams, 7.4oz, 100% Cotton face

Your favorite cozy fleece sweatshirt with a 100% Cotton face. Ideal for DTG and discharge printing.

SIZING CHART: EXTENDED SIZES



THE PERFECT FIT FOR ANY“BODY”

NEW EXTENDED SIZES

MEN: 6200(XS)

STYLES IN 3XLARGE

MEN: 6200, 6210, 6245, 6010,
6410, 3604, 3600A, 6010A

WOMEN: 3900, 6610, 6760,
1510, 1540, 3900A

UNISEX: 3605, 3650, 6411,
4600, 4210, 2021, 6051, 8221,
7401, 7410, 7415, 7433, 7451,
6491, 9000, 9300, 9301, 9600,
9601, 9001, 9303, 9602, 9700

STYLES IN 4XLARGE

MEN: 3600, 6210



SIZE GUIDE

Gender	XS	S	M	L	XL	2XL	3XL	4XL
Men's/Unisex (Chest)	33"-35"	35" - 38"	38" - 41"	43" - 44"	45" - 48"	48" - 52"	53.5" - 56"	60"
Ladies' Fitted (Chest)		29.5"	31.5"	33.5"	36.5"	39.5"		
Ladies' Fitted (Size)		0 - 2	2 - 4	4 - 6	8 - 10	12		
Ladies' Relaxed/Classic (Chest)	30"	32"	34"	36"	39"	42"	45.5"	
Ladies' Relaxed/Classic (Size)	0 - 2	2 - 4	4 - 6	8 - 10	12 - 14	14 - 16	18 - 20	
Ladies' Dolman/Flowy (Chest)	35"	37"	38"	40"	44"	47"	50"	
Ladies' Dolman/Flowy (Size)	2 - 6	4 - 8	6 - 10	8 - 12	12 - 16	18 - 20	20 - 24	
Boys/Youth (Size)	4/5	6/7	8	10/12	14/16			
Girls' (Size)	3/4	6/6X	7/8	10/12	14/16			
Toddler (Size)	2T	3T	4T					
Men's Joggers (Waist)		29"	31"	33"	35"	37"		
Men's Joggers (Inseam)		30"	30"	30"	30.5"	31"		
Ladies' Joggers (Waist)	26.5"	28.5"	30.5"	32.5"	34.5"	36.5"		
Ladies' Joggers (Inseam)	27.75"	28.25"	28.25"	28.25"	28.75"	29.5"		

UNISEX FIT

SIZE EQUIVALENT	XS	S	M	L	XL	2XL	3XL	4XL
Men's	XS	S	M	L	XL	2XL	3XL	4XL
Women's	S	M	L	XL	2XL	3XL	4XL	5XL

STYLE SPECS

Measurements in Inches. HPS = High Point Shoulder. Bust = 1" below armhole. Based on flat measurement.

Style #	Style	Specs	XS	S	M	L	XL	2XL	3XL	4XL
1510	Ideal Tee	HPS	25 1/4	25 7/8	26 1/2	27 1/8	27 3/4	28 3/8	29	
		Bust	14 7/8	15 5/8	16 5/8	17 5/8	19 1/8	20 5/8	22 1/8	
1533	Ideal Racerback Tank	HPS	27	27 1/2	28	28 1/2	29	29 1/2		
		Bust	14	15	16	17	18	19		
1534	Ideal Color Block Racerback Tank	HPS	25 3/4	26 3/8	27	28 5/8	28 1/4	28 7/8		
		Bust	15 1/2	16 1/2	17 1/2	18 1/2	19 1/2	20 1/2		
1540	Ideal V	HPS	25 1/2	26	26 1/2	27	27 1/2	28	28 1/2	
		Bust	15 1/4	16	17	18	19 1/2	21	22 1/2	
1560	Ideal Dolman	HPS	25 1/2	26	26 1/2	27	27 1/2	28	28 1/2	
		Bust	17 3/4	18 3/4	19 3/4	20 3/4	22 1/4	23 3/4	25 1/4	
2021	Unisex Mock Twist Raglan Hoody	HPS	27	28	29	30	31	32	33	
		Bust	18	19 1/2	21	22 1/2	24 1/2	26 1/2	28 1/2	
2050	Men's Mock Twist Raglan Crew	HPS		28	29	30	31	32	33	
		Bust		19 1/8	20 5/8	22 1/8	24 1/8	26 1/8	28 1/8	
3200	Men's Cotton V	HPS	27	28	29	30	31	32		
		Bust	17 1/2	19	20 1/2	22	24	26		
3300L	Perfect Tee	HPS		25 3/8	26	26 5/8	27 1/4	27 7/8		
		Bust		15 1/2	16 1/2	17 1/2	19	20 1/2		
3400L	Perfect Sporty V	HPS		25 3/8	26	26 5/8	27 1/4	27 7/8		
		Bust		14 3/4	15 3/4	16 3/4	18 1/4	19 3/4		
3533	Woman's Spandex Jersey Tank	HPS	25 3/4	26 3/8	27	27 5/8	28 1/4	28 7/8		
		Bust	13	14	15	16	17 1/2	19		
3600	Men's Cotton Crew	HPS	27	28	29	30	31	32	33	34
		Bust	17 1/2	19	20 1/2	22	24	26	28	30
3600A	USA Men's Cotton Crew	HPS	27	28	29	30	31	32	33	34
		Bust	17 1/2	19	20 1/2	22	24	26	28	30
3601	Men's Cotton L/S Crew	HPS		28	29	30	31	32		
		Bust		18 1/2	20	21 1/2	23 1/2	25 1/2		
3602	Men's Cotton Long Body Crew	HPS		31	32	33	34	35	36	
		Bust		18 1/2	20	21 1/2	23 1/2	25 1/2	27 1/2	
3604	Men's Cotton Ringer Tee	HPS	27	28	29	30	31	32	33	
		Bust	17 1/2	19	20 1/2	22	24	26	28	
3605	Cotton Pocket Tee	HPS	27	28	29	30	31	32	33	
		Bust	17 1/2	19	20 1/2	22	24	26	28	
3633	Men's Cotton Tank	HPS		28 1/2	29 1/2	30 1/2	31 1/2	32 1/2		
		Bust		18 1/2	20	21 1/2	23 1/2	25 1/2		
3650	Cotton Raglan Tee	HPS	27	28	29	30	31	32	33	
		Bust	17 5/8	19 1/8	20 5/8	22 1/8	24 1/8	26 1/8	28 1/8	
3900	Women's Boyfriend Tee	HPS	24 3/4	25 3/8	26	26 5/8	27 1/4	27 7/8	28 1/2	
		Bust	15 1/4	16 1/4	17 1/4	18 1/4	19 3/4	21 1/4	22 3/4	
3900A	USA Women's Boyfriend Tee	HPS	24 3/4	25 3/8	26	26 5/8	27 1/4	27 7/8	28 1/2	
		Bust	15 1/4	16 1/4	17 1/4	18 1/4	19 3/4	21 1/4	22 3/4	
3904	Women's Cotton Ringer Tee	HPS		25 3/8	26	26 5/8	27 1/4	27 7/8		
		Bust		16 1/4	17 1/4	18 1/4	19 3/4	21 1/4		
4210	Eco Performance Tee	HPS	27	28	29	30	31	32	33	
		Bust	17 1/2	19	20 1/2	22	24	26	28	
4600	Eco Heavyweight Tee	HPS	27	28	29	31	32	33	34	
		Bust	17	18 1/2	20	22	24	26	28	

STYLE SPECS

Measurements in Inches. HPS = High Point Shoulder. Bust = 1" below armhole. Based on flat measurement.

Style #	Style	Specs	XS	S	M	L	XL	2XL	3XL	4XL
5013	Women's Festival Muscle Tank	HPS	24 1/4	24 7/8	25 1/2	26 1/8	26 3/4	27 3/8		
		Bust	15 1/8	16 1/8	17 1/8	18 1/8	19 5/8	21 1/8		
5030	Women's Festival Scoop	HPS	23 1/4	23 7/8	24 1/2	25 1/8	25 3/4	26 3/8		
		Bust	17 1/2	18 1/2	19 1/2	20 1/2	22	23 1/2		
5033	Women's Festival Tank	HPS	25 1/4	25 3/4	26 1/4	26 3/4	27 1/4	27 3/4		
		Bust	16 5/8	17 5/8	18 5/8	19 5/8	21 1/8	22 5/8		
5040	Women's Festival Sleeveless V	HPS	25	25 1/2	26	26 1/2	27	27 1/2		
		Bust	15 1/2	16 1/2	17 1/2	18 1/2	20	21 1/2		
6010	Men's Tri-Blend Crew	HPS	26 1/2	27 1/2	28 1/2	29 1/2	30 1/2	31 1/2	32 1/2	
		Bust	16 3/4	18 1/4	19 3/4	21 1/4	22 3/4	24 3/4	26 3/4	
6010A	USA Men's Tri-Blend Crew	HPS	26 1/2	27 1/2	28 1/2	29 1/2	30 1/2	31 1/2	32 1/2	
		Bust	16 3/4	18 1/4	19 3/4	21 1/4	22 3/4	24 3/4	26 3/4	
6021	Unisex Tri-Blend L/S Hoody	HPS	27	28	29	30	31	32		
		Bust	16 1/2	18	19 1/2	21	22 1/2	24 1/2		
6040	Men's Tri-Blend V	HPS		27 1/2	28 1/2	29 1/2	30 1/2	31 1/2		
		Bust		18	19 1/2	21	22 1/2	24 1/2		
6051	Unisex Tri-Blend 3/4 Raglan	HPS	27 1/4	28 1/4	29 1/4	30 1/4	31 1/4	32 1/4	33 1/4	
		Bust	17 1/2	19	20 1/2	22	24	26	28	
6071	Men's Tri-Blend L/S Crew	HPS	27	28	29	30	31	32		
		Bust	17 1/2	19	20 1/2	22	24	26		
6072	Men's Tri-Blend L/S Henley	HPS		28	29	30	31	32		
		Bust		19 1/8	20 5/8	22 1/8	24 1/8	26 1/8		
6200	Poly Cotton Crew	HPS	27	28	29	30	31	32	33	
		Bust	17 1/2	19	20 1/2	22	23 1/2	25	26 1/2	
6210	Men's CVC Crew	HPS	27	28	29	30	31	32	33	
		Bust	17 1/2	19	20 1/2	22	24	26	28	
6233	Men's CVC Tank	HPS		28	29	30	31	32		
		Bust		17 1/2	19	20 1/2	22 1/2	24 1/2		
6240	Men's CVC V	HPS		28	29	30	31	32		
		Bust		19	20 1/2	22	24	26		
6333	Men's Muscle Tank	HPS		29	30	31	32	33	34	
		Bust		19	20 1/2	22	24	26	28	
6338	Women's Gathered Raceback Tank	HPS	25 3/4	26 3/8	27	27 5/8	28 1/4	28 7/8		
		Bust	15 1/2	16 1/2	17 1/2	18 1/2	19 1/2	20 1/2		
6360	Women's Roll Sleeve Doman	HPS	25	25 1/2	26	26 1/2	27	27 1/2		
		Bust	17 7/8	18 7/8	19 7/8	20 7/8	22 3/8	23 7/8		
6410	Men's Sueded Crew	HPS	27	28	29	30	31	32	33	
		Bust	17 1/2	19	20 1/2	22	24	26	28	
6411	Sueded L/S Crew	HPS	27	28	29	30	31	32	33	
		Bust	17 1/2	19	20 1/2	22	24	26	28	
6440	Men's Sueded V	HPS	27	28	29	30	31	32		
		Bust	17 1/2	19	20 1/2	22	24	26		
6480	Women's Sueded V	HPS	25 3/4	26 1/4	26 3/4	27 1/4	27 3/4	28 1/4		
		Bust	15	15 3/4	16 3/4	17 3/4	19 1/4	20 3/4		
6491	Sueded Zip Hoody	HPS	26 1/4	27 1/4	28 1/4	29 1/4	30	30 1/2	31	
		Bust	18 5/8	20 1/8	21 5/8	23 1/8	25 1/8	27 1/8	29 1/8	
6521	Burnout Hoody	HPS		27 1/2	28	28 1/2	29	29 1/2		
		Bust		17	18	19	20 1/2	22		

STYLE SPECS

Measurements in Inches. HPS = High Point Shoulder. Bust = 1" below armhole. Based on flat measurement.

Style #	Style	Specs	XS	S	M	L	XL	2XL	3XL	4XL
6533	Women's Burnout Racerback Tank	HPS	25 3/4	26 3/8	27	27 5/8	28 1/4	28 7/8		
		Bust	13 1/2	14 1/2	15 1/2	16 1/2	18	19 1/2		
6610	Women's CVC Tee	HPS	25 3/4	26 3/8	27	27 5/8	28 1/4	28 7/8	29 1/2	
		Bust	15 1/2	16 1/4	17 1/4	18 1/4	19 3/4	21 1/4	22 3/4	
6633	Women's Spandex Jersey Racerback Tank	HPS	25 3/4	26 3/8	27	27 5/8	28 1/4	28 7/8		
		Bust	13	14	15	16	17 1/2	19		
6640	Women's CVC Deep V	HPS		26 1/2	27	27 1/2	28	28 1/2		
		Bust		16 1/4	17 1/4	18 1/4	19 3/4	21 1/4		
6710	Women's Tri-Blend Tee	HPS		25 1/2	26	26 1/2	27	27 1/2		
		Bust		16	17	18	19 1/2	21		
6730	Women's Tri-Blend Scoop	HPS		25 1/2	26	26 1/2	27	27 1/2		
		Bust		16 1/2	17 1/2	18 1/2	20	21 1/2		
6731	Women's Tri-Blend L/S Scoop	HPS		26 1/2	27	27 1/2	28	28 1/2		
		Bust		15 3/4	16 3/4	17 3/4	19 1/4	20 3/4		
6733	Women's Tri-Blend Racerback Tank	HPS	25 7/8	26 1/2	27 1/8	27 3/4	28 3/8	29		
		Bust	15	16	17	18	19 1/2	21		
6734	Tri-Blend Racerback Tank Dress	HPS	32 1/2	33 1/8	33 3/4	34 3/8	35	35 3/8		
		Bust	13 5/8	14 5/8	15 5/8	16 5/8	18 1/8	19 5/8		
6740	Women's Tri-Blend Deep V	HPS		26 1/2	27	27 1/2	28	28 1/2		
		Bust		15 1/2	16 1/2	17 1/2	19	20 1/2		
6760	Women's Tri-Blend Dolman	HPS	25 3/4	26 1/4	26 3/4	27 1/4	27 3/4	28 1/4	28 3/4	
		Bust	17 1/2	18 1/2	19 1/2	20 1/2	22	23 1/2	25	
6931	Women's French Terry L/S Scoop	HPS		24 3/8	25	25 5/8	26 1/4	26 7/8		
		Bust		18 1/2	19 1/2	20 1/2	22	23 1/2		
6933	Women's French Terry Racerback Tank	HPS	26 3/4	27 3/8	28	28 5/8	29 1/4	29 7/8		
		Bust	14 1/2	15 1/2	16 1/2	17 1/2	19	20 1/2		
6951	Women's French Terry 3/4 Raglan	HPS		25 1/2	26	26 1/2	27	27 1/2		
		Bust		19	20	21	22 1/2	24		
7401	Inspired Dye L/S Crew	HPS	27	28	29	30	31	32	33	
		Bust	17	18 1/2	20	22	24	26	28	
7410	Inspired Dye Crew	HPS	27	28	29	30	31	32	33	
		Bust	17	18 1/2	20	22	24	26	28	
7415	Inspired Dye Pocket Crew	HPS	27	28	29	30	31	32	33	
		Bust	17	18 1/2	20	22	24	26	28	
7433	Inspired Dye Tank	HPS	27	28	29	30	31	32	33	
		Bust	16 3/4	18 1/4	19 3/4	21 1/4	23 1/4	25 1/4	27 1/4	
7451	Inspired Dye L/S Pocket Crew	HPS	27	28	29	30	31	32	33	
		Bust	17	18 1/2	20	22	24	26	28	
8201	Unisex L/S Thermal	HPS	27	28	29	30	31	32		
		Bust	16 1/8	17 5/8	19 1/8	20 5/8	22 5/8	24 5/8		
8221	Unisex Thermal Hoody	HPS	27 3/4	28 3/4	29 3/4	30 3/4	31 3/4	32 3/4	33 3/4	
		Bust	16 1/2	18	19 1/2	21	23	25	27	
9000	French Terry Raglan Crew	HPS	26	27	28	29	30	31	32	
		Bust	18 1/2	20	21 1/2	23	25	27	29	
9001	80/20 Fleece Crew W/Pocket	HPS	26	27	28	29	29 3/4	30 1/4	30 3/4	
		Bust	18 1/2	20	21 1/2	23	25	27	29	
9300	PCH Pullover Hoody	HPS	27	28	29	30	31	32	33	
		Bust	19 1/2	21	22 1/2	24	26	28	30	

STYLE SPECS

Measurements in Inches. HPS = High Point Shoulder. Bust = 1" below armhole. Based on flat measurement.

Style #	Style	Specs	XS	S	M	L	XL	2XL	3XL	4XL
9301	French Terry Pullover Hoody	HPS	26	27	28	29	30	31	32	
		Bust	18 1/2	20	21 1/2	23	25	27	29	
9303	80/20 Fleece Pullover Hoody	HPS	26	27	28	29	29 3/4	30 1/4	30 3/4	
		Bust	18 1/2	20	21 1/2	23	25	27	29	
9600	Denim Fleece Zip Hoody	HPS	26	27	28	29	29 3/4	30 1/4	30 3/4	
		Bust	18 1/2	20	21 1/2	23	25	27	29	
9601	French Terry Zip Hoody	HPS	26	27	28	29	30	31	32	
		Bust	18 3/4	20 1/4	21 3/4	23 1/4	25 1/4	27 1/4	29 1/4	
9602	80/20 Fleece Zip Hoody	HPS	26	27	28	29	29 3/4	30 1/4	30 3/4	
		Bust	17 1/2	19	20 1/2	22	24	26	28	
9603	Women's PCH Raglan Zip Hoody	HPS	24 1/4	24 7/8	25 1/2	26 1/8	26 3/4	27 3/8		
		Bust	15 1/2	16 1/2	17 1/2	18 1/2	20	21 1/2		
9700	PCH Bomber Jacket	HPS	26	27	28	29	29 3/4	30 1/4	30 3/4	
		Bust	17 7/8	19 3/8	20 7/8	22 3/8	24 3/8	26 3/8	28 3/8	
9800	Men's Denim Fleece Jogger	Waist		14 1/2	15 1/2	16 1/2	17 1/2	18 1/2		
		Inseam		30	30	30	30 1/2	31		
9801	Women's Denim Fleece Jogger	Waist	13 1/4	14 1/4	15 1/4	16 1/4	17 1/4	18 1/4		
		Inseam	27 3/4	28	28 1/4	28 1/2	28 3/4	29		

STYLE SPECS - YOUTH

Measurements in Inches

Style #	Boys'/Youth Styles	Specs	XS (4/5)	S (6/7)	M (8)	L (10/12)	XL (14/16)
3310	Boy's Cotton Crew	HPS	19	20 1/2	22	23 1/2	25
		Bust	13 3/4	15 1/4	16 3/4	18 1/4	19 3/4
3312	Boy's CVC Crew	HPS	19	20 1/2	22	23 1/2	25
		Bust	14	15 1/2	17	18 1/2	20
6310	Boy's Tri-Blend Crew	HPS	19	20 1/2	22	23 1/2	25
		Bust	14	15 1/2	17	18 1/2	20
3352	Youth CVC Raglan	HPS	19	20 1/2	22	23 1/2	25
		Bust	13 1/2	15	16 1/2	18	19 1/2
6310	Boy's Tri-Blend Crew	HPS	19	20 1/2	22	23 1/2	25
		Bust	14	15 1/2	17	18 1/2	20
9103	80/20 Fleece Youth Zip Hoody	HPS	19	20 1/2	22	23 1/2	25
		Bust	14 1/8	15 5/8	17 1/8	18 5/8	20 1/8

Style #	Girls' Styles	Specs	XS (3/4)	S (6/6x)	M (7/8)	L (10/12)	XL (14/16)
3710	Girl's Princess Tee	HPS	19	20	21	23	25
		Bust	11 1/2	12 1/2	13 1/2	15	16 1/2
3712	Girl's Princess CVC Tee	HPS	19	20	21	23	25
		Bust	11 1/2	12 1/2	13 1/2	15	16 1/2

Style #	Toddler's Style	Specs	2T	3T	4T		
3110	Toddler's Cotton Tee	HPS	15 3/4	16 1/2	17 1/4		
		Bust	13 1/2	14 1/2	15 1/2		



FINE JERSEY

32 Single, 145 grams 4.3oz
100% Combed Ring-Spun Cotton
Plastisol: Soft hand, flash about 180 degrees if needed, cure ink 320 degrees.
Water base ink: Flash about 180 degrees if needed, cure at 320 degrees for 90 seconds.

INSPIRED DYE

24 Single, 175 grams 5.2oz
100% Combed Ring-Spun Cotton
Plastisol: Soft hand, flash about 180 degrees if needed, cure ink 320 degrees.
Water base ink: Flash about 180 degrees if needed, cure at 320 degrees for 90 seconds.

LIGHTWEIGHT JERSEY

34 Single, 135 grams, 4.0oz
100% Combed Ring-Spun Cotton
Plastisol: Soft hand, flash about 180 degrees if needed, cure ink 320 degrees.
Water base ink: Flash about 180 degrees if needed, cure at 320 degrees for 90 seconds.

CVC JERSEY

32 Single, 145 grams, 4.3oz
60% Combed Ring-Spun Cotton 40% Polyester
Plastisol: Soft hand, flash about 180 degrees if needed, cure ink 320 degrees.
Water base ink: Flash about 180 degrees if needed, cure at 320 degrees for 90 seconds.

MOCK TWIST

20 Single, 175 grams, 5.1oz
60% Combed Ring-Spun Cotton 40% Polyester
Plastisol: Soft hand, flash about 180 degrees if needed, cure ink 320 degrees.
Water base ink: Flash about 180 degrees if needed, cure at 320 degrees for 90 seconds.

SUEDED JERSEY

32 Single, 145 grams, 4.3oz
60% Combed Ring-Spun Cotton 40% Polyester
Plastisol: Soft hand, flash about 180 degrees if needed, cure ink 320 degrees.
Water base ink: Flash about 180 degrees if needed, cure at 320 degrees for 90 seconds.

SPANDEX JERSEY

40 Single, 145 grams, 4.3oz
57% Combed Ring-Spun Cotton 38% Polyester 5% Spandex
Plastisol: Soft hand, flash about 180 degrees if needed, cure ink 320 degrees.
Stretch additive recommended.
Water base ink: Flash about 180 degrees if needed, cure at 320 degrees for 90 seconds.

LIGHTWEIGHT FRENCH TERRY

30 Single, 165 grams, 4.9oz
50% Combed Ring-Spun Cotton 50% Polyester
Plastisol: Soft hand, flash about 180 degrees if needed, cure ink 320 degrees.
Water base ink: Flash about 180 degrees if needed, cure at 320 degrees for 90 seconds.

TRI-BLEND JERSEY

32 Single, 145 grams, 3.5oz
50% Polyester 25% Combed Ring-Spun Cotton 25% Rayon
Plastisol: Soft hand, low flash temperature cure ink 320 degrees.
Water base ink: Low flash temperature, cure at 320 degrees for 90 seconds.

65/35 POLY COTTON

40 single, 120 grams, 3.5oz
65% Polyester 35% Combed Ring-Spun Cotton
Plastisol: Soft hand, low flash temperature cure ink 320 degrees.
Water base ink: Low flash temperature, cure at 320 degrees for 90 seconds.

BURNOUT JERSEY

32 single, 125 grams, 3.7oz
65% Polyester 35% Combed Ring-Spun Cotton
High mesh count recommended.
Plastisol: Soft hand, low flash temperature cure ink 320 degrees.
Water base ink: Low flash temperature, cure at 320 degrees for 90 seconds.

WAFFLE THERMAL

36 Single, 190 grams, 5.6oz
60% Combed Ring-Spun Cotton 40% Polyester
Plastisol: Soft hand, flash about 180 degrees if needed, cure ink 320 degrees.
Stretch additive recommended.
Water base ink: Flash about 180 degrees if needed, cure at 320 degrees for 90 seconds.

LIGHTWEIGHT COTTON POLY JERSEY

30 Single, 135 grams, 4.0oz
60% Combed Ring-Spun Cotton 40% Polyester
Plastisol: Soft hand, flash about 180 degrees if needed, cure ink 320 degrees.
Water base ink: Flash about 180 degrees if needed, cure at 320 degrees for 90 seconds.

ECO PERFORMANCE

30 Single, 145 grams, 4.3oz
30% Recycled Cotton 30% Cotton 40% Recycled Polyester (RPET)
Plastisol: Soft hand, flash about 180 degrees if needed, cure ink 320 degrees.
Water base ink: Flash about 180 degrees if needed, cure at 320 degrees for 90 seconds.

ECO HEAVYWEIGHT

20 Single, 190 grams, 5.6oz
60% Organic Cotton 40% Recycled Polyester (RPET)
Plastisol: Soft hand, flash about 180 degrees if needed, cure ink 320 degrees.
Water base ink: Flash about 180 degrees if needed, cure at 320 degrees for 90 seconds.

MIDWEIGHT FRENCH TERRY

30 Single, 180 grams, 5.3oz
60% Combed Ring-Spun Cotton 40% Polyester Fleece
Plastisol: Soft hand, flash about 180 degrees if needed, cure ink 320 degrees.
Water base ink: Flash about 180 degrees if needed, cure at 320 degrees for 90 seconds.

PCH FLEECE

30 Single, 250grams, 7.4oz
60% Combed Ring-Spun Cotton 40% Polyester Fleece
Plastisol: Soft hand, flash about 180 degrees if needed, cure ink 320 degrees.
Water base ink: Flash about 180 degrees if needed, cure at 320 degrees for 90 seconds.

DENIM FLEECE

250 grams, 7.4oz
53% Combed Ring-Spun Cotton 47% Polyester Fleece
Plastisol: Soft hand, flash about 180 degrees if needed, cure ink 320 degrees.
Water base ink: Flash about 180 degrees if needed, cure at 320 degrees for 90 seconds.

80/20 FLEECE

30 Single, 250 grams, 7.4oz, 100% Cotton face
80% Cotton 20% Polyester Fleece
Plastisol: Soft hand, flash about 180 degrees if needed, cure ink 320 degrees.
Water base ink: Flash about 180 degrees if needed, cure at 320 degrees for 90 seconds.

PRINT GUIDE

DISCHARGE RATING

Discharge Print Rating Scale:

- A** - Ideal for discharge printing
- B** - Acceptable for discharge printing
- C** - Not recommended for discharge printing

For best results, use the 100% cotton recommended styles 3600 and 3900.

COLOR	PANTONE CODE	DISCHARGE RATING
 ANTIQUE GOLD	7550 U	A
 BANANA CREAM	1205 C	A
 BLACK		A
 CARDINAL	202 C	B
 CANCUN	636 C	A
 CLASSIC ORANGE	172 C	A
 COOL BLUE	7693 C	C
 CREAM	9162 C	A
 DARK CHOCOLATE	412 C	B
 FOREST GREEN	560 C	A
 GOLD	130 C	B
 HEATHER GRAY		C
 HEAVY METAL	447 C	A
 HOT PINK	211 C	B
 INDIGO	7545 C	B
 IVORY	7499 U	A
 KELLY GREEN	347 C	C
 LIGHT BLUE	545 C	A
 LIGHT GRAY	Cool Gray 6 C	A

COLOR	PANTONE CODE	DISCHARGE RATING
 LIGHT OLIVE	5763 U	A
 LIGHT PINK	494 C	B
 MAROON	7643 C	B
 MIDNIGHT NAVY	539 C	B
 MILITARY GREEN	5743 C	A
 MINT	566 U	B
 NATURAL	7499 U	A
 PURPLE BERRY	526 U	A
 PURPLE RUSH	268 C	C
 RED	186 C	C
 ROYAL	661 C	C
 SAND	7527 C	A
 SCARLET	202 C	B
 TAHITI BLUE	319 C	A
 TURQUOISE	7461 C	A
 VIBRANT YELLOW	107 C	C
 WARM GRAY	403 C	A
 WHITE		N/A

Next Level Apparel is providing the above information as a reference guide only. Actual temperatures, drying times, inks, or other elements of the printing process might vary based on equipment, location or any other number of factors. A test sample run is highly recommended, especially if you have a large order or if your printer does not specialize in printing on blended fabrics. Next Level Apparel assumes no liability for providing the above information. For more information please contact csr@nextlevelapparel.com.

INDEX

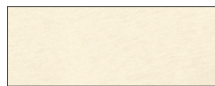
1510	Women's Ideal Tee	68-69	5033	Women's Festival Tank	52	6740	Women's Tri-Blend Deep V	36
1533	Women's Ideal Racerback Tank	72	5040	Women's Festival Sleeveless V	54	6760	Women's Tri-Blend Dolman	38
1534	Ideal Colorblock Racerback Tank	74-75	6010	Men's Tri-Blend Crew	34-35	6931	Women's French Terry L/S Scoop	67
1540	Women's Ideal V	68-69	6010A	USA Men's Tri-Blend Crew	9	6933	Women's French Terry Racerback Tank	67
1560	Women's Ideal Dolman	70	6021	Unisex Tri-Blend L/S Hoody	45	6951	Women's French Terry 3/4 Raglan	66
2021	Unisex Mock Twist Raglan Hoody	60	6040	Men's Tri-Blend V	37	7401	Inspired Dye L/S Crew	79
2050	Men's Mock Twist Raglan Crew	61	6051	Unisex Tri-Blend 3/4 Raglan	46-47	7410	Inspired Dye Crew	78
3110	Toddler's Cotton Tee	19	6071	Men's Tri-Blend L/S Crew	43	7415	Inspired Dye Pocket Crew	81
3200	Men's Cotton V	20	6072	Men's Tri-Blend L/S Henley	44	7433	Inspired Dye Tank	80
3300L	Women's Perfect Tee	64	6200	Poly/Cotton Crew	49	7451	Inspired Dye L/S Pocket Crew	81
3310	Boy's Cotton Crew	16	6210	Men's CVC Crew	13	8201	Unisex L/S Thermal	88
3312	Boy's CVC Crew	16	6233	Men's CVC Tank	21	8221	Unisex Thermal Hoody	89
3352	Youth CVC 3/4 Raglan	18	6240	Men's CVC V	21	9000	French Terry Raglan Crew	93
3400L	Women's Perfect V	65	6310	Boy's Tri-Blend Crew	34-35	9001	80/20 Fleece L/S Crew with Pocket	94
3533	Women's Spandex Tank	63	6333	Men's Muscle Tank	76	9103	80/20 Fleece Youth Pullover Hoody	97
3600	Men's Cotton Crew	12	6338	Women's Gathered Racerback Tank	73	9300	PCH Pullover Hoody	101
3600A	USA Men's Cotton Crew	8	6360	Women's Roll Sleeve Dolman	71	9301	French Terry Pullover Hoody	90-91
3601	Men's Cotton L/S Crew	24	6410	Men's Sueded Crew	83	9303	80/20 Fleece Pullover Hoody	95
3602	Men's Cotton Long Body Crew	25	6411	Sueded L/S Crew	86	9600	Denim Fleece Zip Hoody	98
3604	Men's Cotton Ringer Tee	28-29	6440	Men's Sueded V	84	9601	French Terry Zip Hoody	92
3605	Cotton Pocket Crew	23	6480	Women's Sueded V	85	9602	80/20 Fleece Zip Hoody	96
3633	Men's Cotton Tank	20	6491	Sueded Zip Hoody	87	9603	Women's PCH Raglan Zip Hoody	100
3650	Cotton Raglan Tee	30-31	6521	Women's Burnout Hoody	62	9700	PCH Fleece Bomber Jacket	102-103
3710	Girl's Princess Tee	17	6533	Women's Burnout Racerback Tank	62	9800	Men's Denim Fleece Jogger	99
3712	Girl's Princess CVC Tee	17	6610	Women's CVC Tee	15	9801	Women's Denim Fleece Jogger	99
3900	Women's Boyfriend Tee	14	6633	Women's Spandex Racerback Tank	63			
3900A	USA Women's Boyfriend Tee	8	6640	Women's CVC Deep V	22			
3904	Women's Cotton Ringer Tee	27	6710	Women's Tri-Blend Tee	34-35			
4210	Eco Performance Tee	59	6730	Women's Tri-Blend Scoop	39			
4600	Eco Heavyweight Tee	58	6731	Women's Tri-Blend L/S Scoop	42			
5013	Women's Festival Muscle Tank	53	6733	Women's Tri-Blend Racerback Tank	40			
5030	Women's Festival Scoop	55	6734	Women's Tri-Blend Racerback Dress	41			



COLOR CARD

SOLIDS

Fine Jersey: 32 Single 145g/4.3oz 100% Combed Ring-Spun Cotton
Lightweight Jersey: 34 Single 135g/4.0oz 100% Combed Ring-Spun Cotton
Sueded Jersey: 32 Single 145g/4.3oz 60% Combed Ring-Spun Cotton 40% Polyester
Spandex Jersey: 40 Single 145g/4.3oz 57% Combed Ring-Spun Cotton 38% Poly 5% Spandex
Lightweight French Terry: 30 Single 165g/4.9oz 50% Combed Ring-Spun Cotton 50% Poly
Lightweight Cotton Poly Jersey: 30 Single, 135 grams/4.0oz 60% Combed Ring-Spun Cotton 40% Polyester



NATURAL/IVORY



LIGHT PINK



LIGHT ORANGE



MINT



LIGHT BLUE



TAHITI BLUE



SAND



SILVER



BANANA CREAM



HOT PINK



CLASSIC ORANGE



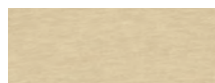
APPLE GREEN



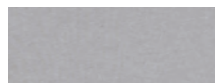
CANCUN



TURQUOISE



CREAM



LIGHT GRAY



DARK GRAY



VIBRANT YELLOW



RASPBERRY



LILAC



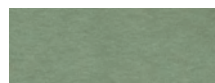
ENVY



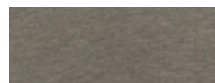
ROYAL



TEAL



LIGHT OLIVE



WARM GRAY



HEAVY METAL



GOLD



SHOCKING PINK



PURPLE BERRY



KELLY GREEN



COOL BLUE



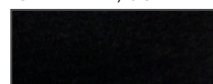
INDIGO



MILITARY GREEN



CARDINAL/SCARLET



BLACK



ANTIQUE GOLD



RED



PURPLE RUSH



FOREST GREEN



MIDNIGHT NAVY



PLUM



DARK CHOCOLATE



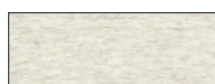
MAROON



WHITE

90/10

COTTON/POLY



OATMEAL



HEATHER GRAY

57/38/5

COTTON/POLY/SPANDEX



LIGHT HEATHER GRAY

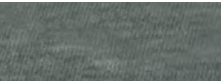
CVC

CVC Jersey: 32 Single 145g/4.3oz 60% Combed Ring-Spun Cotton 40% Poly

				
CREAM	SAND	BANANA CREAM	ORANGE	RED
				
HOT PINK	RASPBERRY	LUSH	PLUM	CARDINAL/SCARLET
				
LILAC	PURPLE BERRY	PURPLE RUSH	STORM	MIDNIGHT NAVY
				
ICE BLUE	BONDI BLUE	TURQUOISE	ROYAL	INDIGO
				
MINT	APPLE GREEN	KELLY GREEN	TAHITI BLUE	TEAL
				
SILK	WARM GRAY	LIGHT OLIVE	MILITARY GREEN	ESPRESSO
				
STONE GRAY	DK HEATHER GRAY	CHARCOAL	BLACK (SOLID)	WHITE (SOLID)
				
NEON YELLOW	NEON HEATHER ORANGE	NEON HEATHER GREEN	NEON HEATHER PINK	

SUEDED (HEATHERED COLORS) NEW!

Sueded Jersey: 32 Single. 145g/4.3oz, 60% Combed Ring-Spun Cotton 40% Poly

				
HEATHER MAROON	HEATHER COOL BLUE	HEATHER FOREST GREEN	DK HEATHER GRAY	HEATHER METAL
				
HEATHER CHARCOAL				

POLY/COTTON

65/35 Poly Cotton: 40 Single 120g/3.5oz 65% Poly 35% Combed Ring-Spun Cotton

				
ANTIQUE GOLD	RED	ENVY	STONEWASH DENIM	SILVER
				
ESPRESSO	SHIRAZ	ROYAL PINE	ROYAL	ASH
				
SAGE	SMOKED PAPRIKA	STONEWASH GREEN	INDIGO	ANTIQUE DENIM
				
CHARCOAL	WHITE (SOLID)	BLACK (SOLID)		

TRI-BLEND

Tri-Blend Jersey: 32 Single 145g/4.3oz 50% Poly 25% Combed Ring-Spun Cotton 25% Rayon



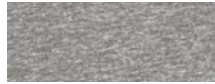
VINTAGE PINK



VINTAGE LILAC



TAHITI BLUE



PREMIUM HEATHER



VTG. LIGHT ORANGE



PURPLE RUSH



VINTAGE TURQUOISE



VENETIAN GRAY



VTG. SHOCKING PINK



VINTAGE PURPLE



VINTAGE ROYAL



VINTAGE BLACK



VINTAGE RED



ENVY



INDIGO



HEATHER WHITE



MACCHIATO



MILITARY GREEN



VINTAGE NAVY

BURNOUT

Burnout Jersey: 30 Single 125g/3.7oz 65% Poly 35% Combed Ring-Spun Cotton



SHOCKING PINK



NEON ORANGE



PURPLE RUSH



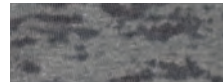
NEON PINK



ROYAL



NEON GREEN



DARK GRAY



TAHITI BLUE



WHITE



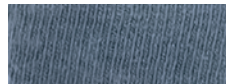
BLACK

INSPIRED DYE

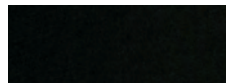
Inspired Dye (garment dye): 24 Single 175g/5.2 oz 100% Combed Ring-Spun Cotton



BLONDE



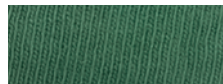
BLUE JEAN



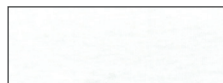
BLACK (SOLID)



GUAVA



CLOVER



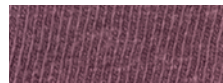
WHITE (SOLID)



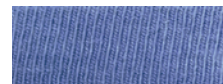
SMOKED PAPRIKA



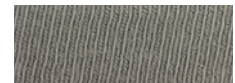
OCEAN



SHIRAZ



PERI BLUE



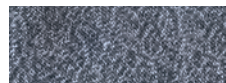
LEAD



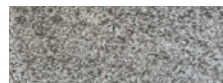
SHADOW

MOCK TWIST

Mock Twist Jersey. 20 singles, 175g/5.1 oz 60% Combed Ring-Spun Cotton 40% Poly



INDIGO



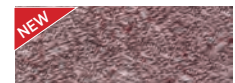
HEATHER GRAY



BLACK



FOREST GREEN



LIGHT MAROON

THERMAL

Waffle Thermal: 36 Single 190g/5.6 oz 60% Combed Ring-Spun Cotton 40% Poly



LIGHT PINK



SAND



MIDNIGHT NAVY



RED



ENVY



WHITE



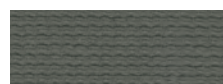
MAROON



ROYAL



HEAVY METAL



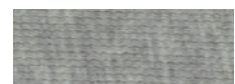
WARM GRAY



HEATHER BLUE



BLACK



HEATHER GRAY

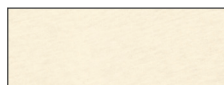


HEATHER CHARCOAL



SUSTAINABLE

Eco Heavyweight: 20 Single, 5.4oz/180g 60% Organic Cotton 40% Recycled Poly RPET
Eco Performance: 30 Single, 145g/ 4.3oz 30%Recycled Cotton 30% Cotton 40% Recycled Poly RPET



NATURAL



HEATHER RED



HEATHER TEJA



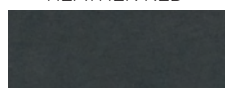
CARDINAL



HEATHER SAPPHIRE



DARK HEATHER GRAY



HEAVY METAL



ROYAL PINE



HEATHER PACIFIC



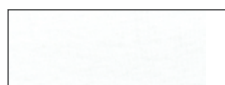
MIDNIGHT NAVY



HEATHER BLACK



BLACK



WHITE

THE FLEECE COLLECTION

DENIM FLEECE

250g/7.4oz heather denim-inspired fleece, 53% cotton 47% poly



TURQUOISE



PLUM



MILITARY
GREEN



NAVY



BLACK

MIDWEIGHT FRENCH TERRY

30 Single, 180g/5.3oz midweight soft French Terry fabric, 60% cotton 40% poly



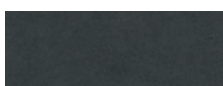
RED



ROYAL



MIDNIGHT NAVY



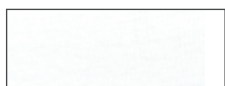
HEAVY METAL



MILITARY GREEN



HEATHER GRAY



WHITE

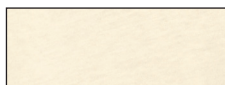


BLACK



80/20 FLEECE

30 Single, 250g/7.4oz 80% cotton 20% poly



NATURAL



ROYAL



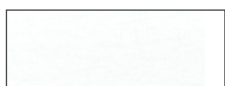
MAROON



MIDNIGHT NAVY



HEAVY METAL



WHITE



FOREST GREEN



BLACK

PCH FLEECE

30 Single, 250g/7.4oz heathered fleece, 60% cotton 40% poly



HEATHER CARDINAL



HEATHER MAROON



HEATHER GRAY



HEATHER
MILITARY GREEN



HEATHER BLACK



HEATHER BAY
BLUE



HEATHER TEAL



HEATHER
MIDNIGHT NAVY



NEXT LEVEL
APPAREL™



NEXT LEVEL
APPAREL™



MEN'S • WOMEN'S • CO-ED • YOUTH